

HIGH POWER TRAVELING WAVE TUBE FOR COMMUNICATIONS LD7272 SERIES

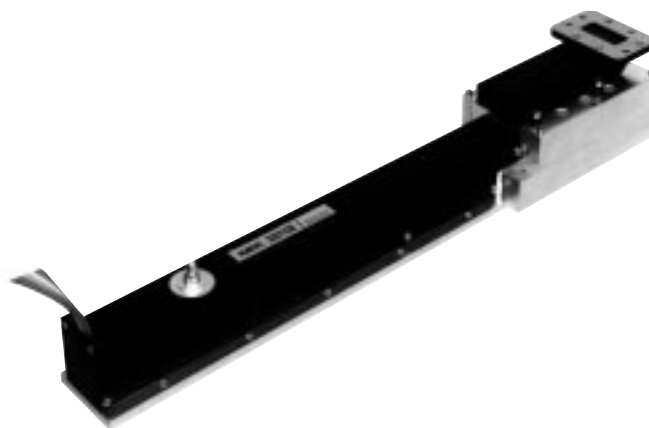
6 GHz, 400 W CW, CONDUCTION COOLING, HIGH POWER GAIN

GENERAL DESCRIPTION

The NEC LD7272 series of PPM focused traveling wave tubes are designed for final amplifier in the earth-to-satellite communication's transmitter.

These are capable of delivering an output power of 400 W over the range of 5.85 to 6.45 GHz and an output power of 400 W over the range of 5.85 to 7.1 GHz with a power gain of more than 49 dB at any power level.

Furthermore, these are rugged and reliable design offering long life services.



FEATURES

○ Lightweight, Compact and Efficient

The tube has dual-depressed collectors and designed to operate at high efficiency across the power output range. It features state-of-the-art techniques to optimize size and efficiency.

○ Low Distortion

Distortion is a very important factor in multiplex digital signals transmission. NEC has developed techniques for the correction of non-linear distortion and phase generated in a TWT. As a result, the TWT has an optimum performance across a broad power range and is ideally suited for multi-carrier transmission systems.

○ Simple Cooling System

The tube is conduction cooled, so that the cooling system is simplified.

○ Rugged Construction

The power gain is designed to be rugged, therefore it is suitable for transportable systems.

○ Long Life and High Stability

The tube employs an advanced impregnated cathode with a low operating temperature for long life.

○ Micro-discharge Free

The tube is carefully designed to be free from microdischarge in the electron gun for long term operation, therefore it is suitable for digital communication service.

For safe use of microwave tubes, refer to NEC document "Safety instructions to all personnel handling electron tubes" (ET0048EJ*V*UM00)

The information in this document is subject to change without notice.

GENERAL CHARACTERISTICS

ELECTRICAL

Frequency	5.85 to 6.45 GHz
	5.85 to 7.1 GHz
Output Power	400 W
Heater Voltage	6.3 V
Heater Current	1.6 A
Type of Cathode	Indirectly heated, Impregnated
Cathode Warm-up Time	180 s

MECHANICAL

Dimensions	See Outline
Weight	3.2 kg approx.
Focusing	Periodic Permanent Magnet
Mounting Position	Any
Electrical Connections	Flying Leads
RF Connections	
Input	SMA Female
Output	CPR-137 Flange
Cooling	Conduction

ABSOLUTE RATINGS (Note 1, 2 and 3)

ELECTRICAL

	Min.	Max.	Unit
Heater Voltage	6.0	6.6	V
Heater Surge Current	-	3.0	A
Heater Current	-	2.2	A
Heater Warm-up Time	180	-	s
Helix Voltage	8.5	9.2	kVdc
Helix Current	-	15.0	mAdc
Collector-1 Voltage	4.2	5.5	kVdc
Collector-1 Current	-	175	mAdc
Collector-2 Voltage	2.0	3.2	kVdc
Collector-2 Current	-	310	mAdc
RF Drive Power	-	5	dBm
Load VSWR	-	1.5 : 1	-

ENVIRONMENTAL

	Min.	Max.	Unit
Heat Sink Temperature	-40	+105	°C
Ambient Temperature			
Storage	-50	+85	°C

TYPICAL OPERATION (Note 2, 3, 4 and 5)

		Unit
Frequency	6.15	GHz
Output Power	432	W
Heater Voltage (Note 4)	6.3	V
Heater Current	1.55	A
Collector-1 Voltage	4.5	kVdc
Collector-1 Current	146	mA _{dc}
Collector-2 Voltage	2.88	kVdc
Collector-2 Current	143	mA _{dc}
Cathode Current	294	mA _{dc}
Helix Voltage	9.0	kVdc
Helix Current	3.6	mA _{dc}
Power Gain at (SSG)	57.2	dB
at (LSG)	52.7	dB
Gain Variation at 40 W	1.5	dB/600MHz
Gain Slope at 40 W	0.015	dB/MHz
AM-PM Conversion		
at 40 W	0.9	deg./dB
at 400 W	1.4	deg./dB
3rd Order Intermodulation	-26	dBc
(two equal carriers, 100 W total)		
Spurious	-67	dBc
Noise Figure	25	dB
Overall Efficiency	39	%

Note 1 : Absolute rating should not be exceeded under continuous or transient conditions. A single absolute rating may be the limitation and simultaneous operation at more than one absolute rating may not be possible.

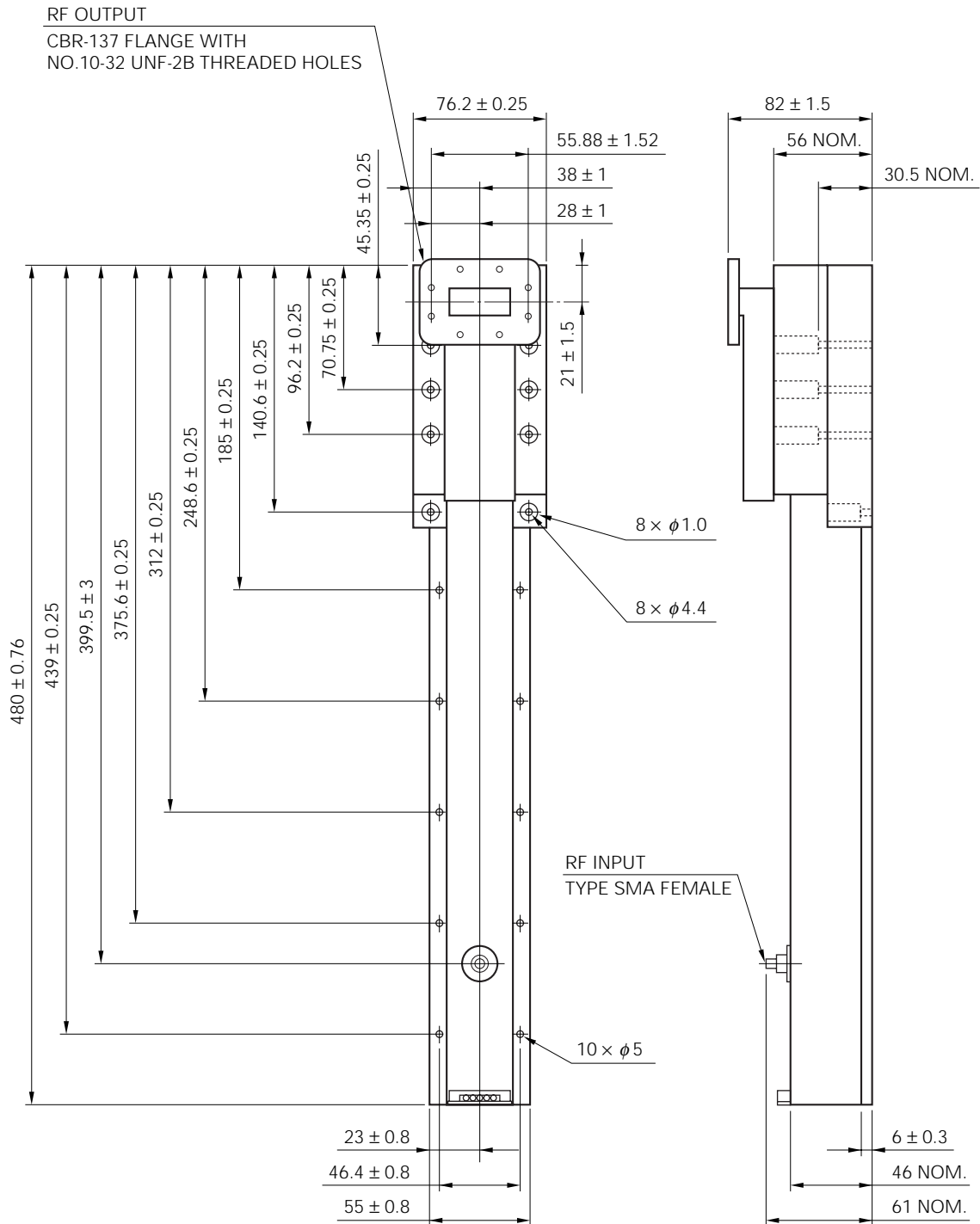
Note 2 : The tube body is at ground potential in operation.

Note 3 : All voltages are referred to the cathode potential except the heater voltage.

Note 4 : The optimum operating parameters are shown on a test performance sheet for each tube.

Note 5 : These characteristics and operating values may be changed as a result of additional information or product improvement. NEC should be consulted before using this information for equipment design. This data sheet should not be referred to a contractual specification.

LD7272 series OUTLINE (Unit in mm)



LEAD COLOR	LEAD CONNECTIONS	LENGTH
BROWN	HEATER	460 mmMIN.
YELLOW	HEATER-CATHODE	460 mmMIN.
ORANGE	COLLECTOR-1	460 mmMIN.
BLUE	COLLECTOR-2	460 mmMIN.
GREEN	HELIX (GROUND)	460 mmMIN.

No part of this document may be copied or reproduced in any form or by any means without the prior written consent of NEC Corporation. NEC Corporation assumes no responsibility for any errors which may appear in this document.

NEC Corporation does not assume any liability for infringement of patents, copyrights or other intellectual property rights of third parties by or arising from use of a device described herein or any other liability arising from use of such device. No license, either express, implied or otherwise, is granted under any patents, copyrights or other intellectual property rights of NEC Corporation or others.

While NEC Corporation has been making continuous effort to enhance the reliability of its electronic components, the possibility of defects cannot be eliminated entirely. To minimize risks of damage or injury to persons or property arising from a defect in an NEC electronic component, customers must incorporate sufficient safety measures in its design, such as redundancy, fire-containment, and anti-failure features.

NEC devices are classified into the following three quality grades:

"Standard", "Special", and "Specific". The Specific quality grade applies only to devices developed based on a customer designated "quality assurance program" for a specific application. The recommended applications of a device depend on its quality grade, as indicated below. Customers must check the quality grade of each device before using it in a particular application.

Standard: Computers, office equipment, communications equipment, test and measurement equipment, audio and visual equipment, home electronic appliances, machine tools, personal electronic equipment and industrial robots

Special: Transportation equipment (automobiles, trains, ships, etc.), traffic control systems, anti-disaster systems, anti-crime systems, safety equipment and medical equipment (not specifically designed for life support)

Specific: Aircrafts, aerospace equipment, submersible repeaters, nuclear reactor control systems, life support systems or medical equipment for life support, etc.

The quality grade of NEC devices is "Standard" unless otherwise specified in NEC's Data Sheets or Data Books.

If customers intend to use NEC devices for applications other than those specified for Standard quality grade, they should contact an NEC sales representative in advance.

Anti-radioactive design is not implemented in this product.