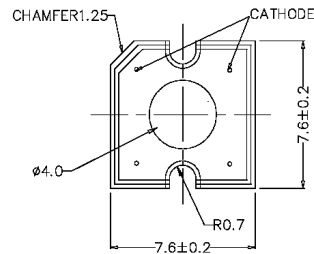
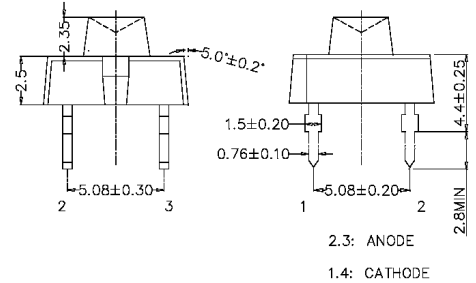


LP379PBG1-C0G

Applications

Advertising signs
Indicators
Message board



- NOTES: 1. ALL DIMENSIONS ARE IN mm TOLERANCE IS. ±0.25mm UNLESS OTHERWISE NOTED.
2. AN EPOXY MENISCUS MAY EXTEND ABOUT 1.5mm DOWN THE LEADS.
3. BURR AROUND BOTTOM OF EPOXY MAY BE 0.5 mm MAX.

Maximum Ratings (Ta=25°C)

| Characteristic | Symbol | Max. | Unit |
|-----------------------|------------------|----------------|------|
| Forward Current | I _F | 30 | mA |
| Reverse Voltage | V _R | 5 | V |
| Power Dissipation | P _D | 120.00 | mW |
| Operating Temperature | T _{opr} | -20 ~ +75 | °C |
| Storage Temperature | T _{stg} | -30 ~ +80 | °C |
| Soldering Temperature | T _{sol} | 260 | °C |
| Soldering Time | - | for 3 sec. max | - |

Opto-Electrical Characteristics (Ta=25°C)

| Characteristic | Symbol | Test Condition | Min | Typ | Max | Unit |
|--------------------------|-------------------|----------------------|---------|---------|------|------|
| Forward Voltage | V _F | I _F =30mA | - | 4.00 | 4.60 | V |
| Reverse Current | I _R | V _R =5V | - | - | 100 | μA |
| Luminous Intensity | I _v | I _F =30mA | 1000.00 | 2000.00 | - | mcd |
| Viewing Angle | 2θ ^{1/2} | - | - | 120° | - | deg. |
| Peak Wavelength | λ _p | I _F =30mA | - | 502 | - | nm |
| Dominant Wavelength | λ _d | I _F =30mA | - | 505 | - | nm |
| Spectral Line Half Width | Δλ | I _F =30mA | - | 38 | - | nm |

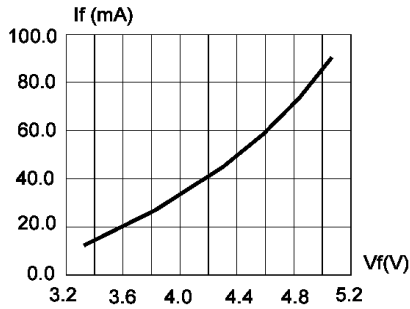


FIG.1 FORWARD CURRENT VS. FORWARD VOLTAGE.

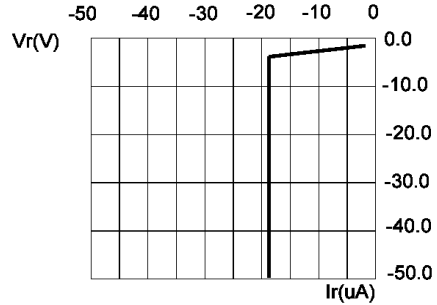


FIG.2 REVERSE CURRENT VS. REVERSE VOLTAGE.

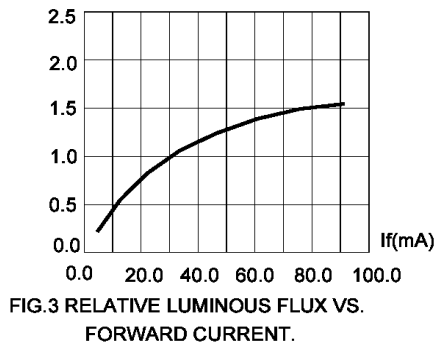


FIG.3 RELATIVE LUMINOUS FLUX VS. FORWARD CURRENT.

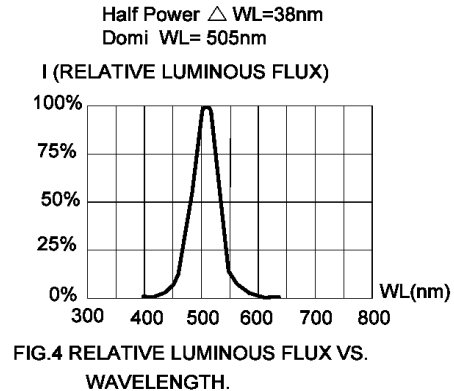


FIG.4 RELATIVE LUMINOUS FLUX VS. WAVELENGTH.

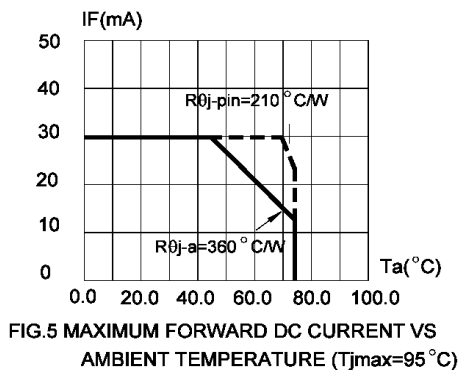


FIG.5 MAXIMUM FORWARD DC CURRENT VS AMBIENT TEMPERATURE (Tjmax=95 °C)

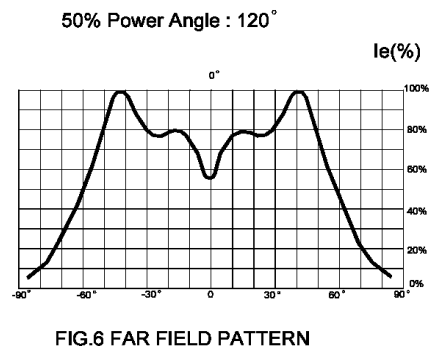


FIG.6 FAR FIELD PATTERN

1. Cathode PAD Area (0.18 X 0.18 X 2inch²)
2. Height above nominal seating plane in inches(0.3inch)