

Silicon Double Balanced HMIC™ Mixer, 700 - 1200 MHz

**MA4EX950M-1225T
V3**

Features

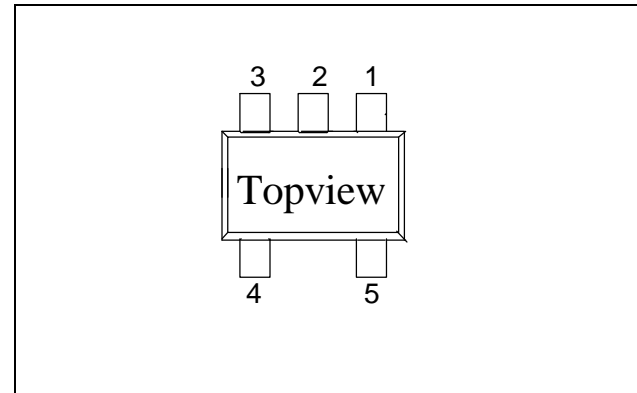
- SOT-25 Low Cost Miniature Plastic Package
- 7.0 dB Typical Conversion Loss
- +7 to +13 dBm LO Drive
- HMIC™ Patented Process
- Silicon Medium Barrier Schottky Diodes
- DC - 400 MHz IF Bandwidth

Description and Applications

M/A-COM's MA4EX950M-1225T is a silicon monolithic 700-1200 MHz double balanced mixer in a low cost miniature surface mount SOT-25 package. The die uses M/A-COM's unique HMIC™ silicon/glass process to achieve low loss passive elements while retaining the advantages of medium barrier silicon Schottky diodes.

These mixers are well suited for high volume wireless and cellular applications where small size and repeatability are required. Typical applications include frequency conversion, modulation, and demodulation in wireless receivers and transmitters.

**SOT-25 Package Outline
(Topview)**



PIN Configuration

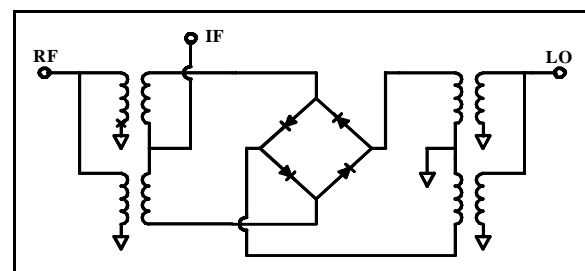
PIN	Function	PIN	Function
1	RF	4	GND
2	GND	5	IF
3	LO		

Absolute Maximum Ratings¹

Parameter	Maximum Ratings
Operating Temperature	-65 °C to +125 °C
Storage Temperature	-65 °C to +150 °C
Incident LO Power	+20 dBm
Incident RF Power	+20 dBm
Mounting Temperature	+235 °C for 10 seconds

1. Exceeding these limits may cause permanent damage.

Functional Schematic



Electrical Specifications @ +25 °C

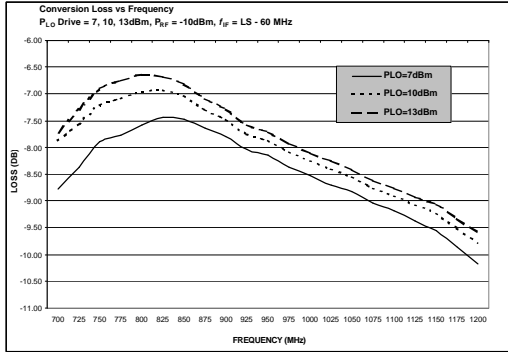
Parameter	Frequency Range	Test Conditions	Units	Min.	Typ.	Max.
Conversion Loss	850 MHz 0.7—1.2 GHz	LO Drive = +10 dBm RF = -10 dBm, IF = 60 MHz	dB		7.0 8.1	8.0 10.5
L - R Isolation	850 MHz 0.7—1.2 GHz	LO Drive = +10 dBm RF Level = -10 dBm	dB		26.0 20.5	
L - I Isolation	850 MHz 0.7—1.2 GHz	LO Drive = +10 dBm RF Level = -10 dBm	dB		26.5 27.0	
R - I Isolation	850 MHz 0.7—1.2 GHz	LO Drive = +10 dBm RF Level = -10 dBm	dB		27.5 24.0	
LO VSWR	850 MHz 0.7—1.2 GHz	LO Drive = +10 dBm RF Level = -10 dBm			1.8:1 1.8:1	- -
RF VSWR	850 MHz 0.7—1.2 GHz	LO Drive = +10 dBm RF Level = -10 dBm			1.6:1 2.5:1	- -
IF VSWR	DC - 400 MHz	LO Drive = +10 dBm RF Level = -10 dBm			1.05:1	-
Input IP3	850 MHz 0.7—1.2 GHz	LO Drive = +10 dBm RF = -5 dBm, IF = 60 MHz	dBm	18.5 13.0	20.5 18.0	
Input 1 dB Compression	850 MHz 0.7—1.2 GHz	LO Drive = +10 dBm RF = -10 dBm, IF = 60 MHz	dBm		4.3 5.6	
IF 1 dB Bandwidth	DC - 400 MHz	LO = 850 MHz @ +10 dBm	MHz	0		400.0

Silicon Double Balanced HMIC™ Mixer, 700 - 1200 MHz

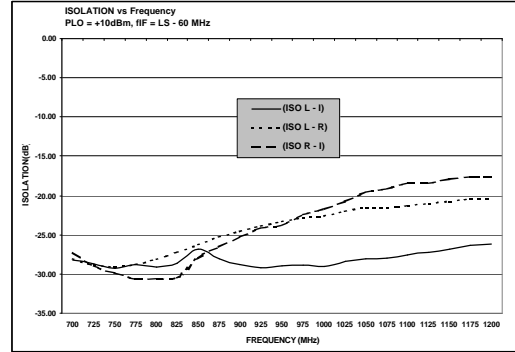
**MA4EX950M-1225T
V3**

Typical Performance Curves (LO Drive = +10 dBm, RF = -10 dBm, IF = 60 MHz)

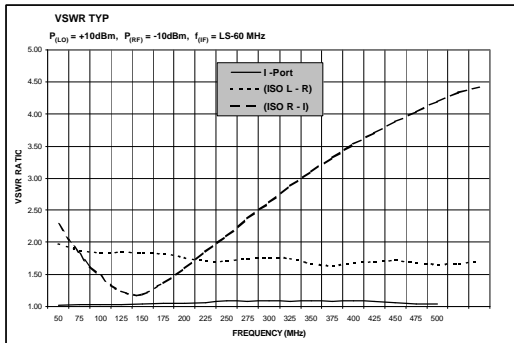
Conversion Loss



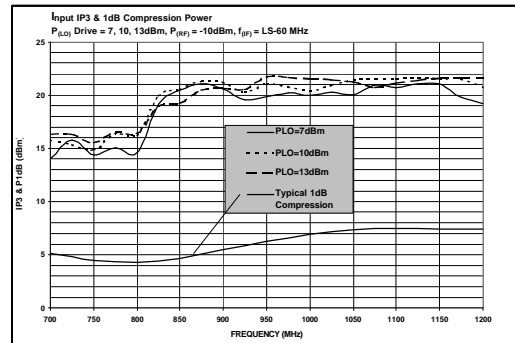
Isolation



RF and IF VSWR



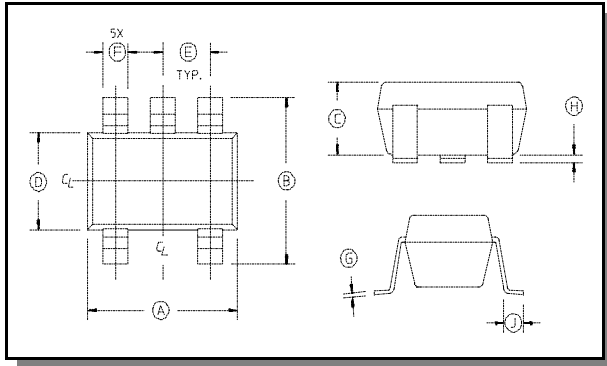
Third Order Intercept and Input 1 dB Compression Power



Silicon Double Balanced HMIC™ Mixer, 700 - 1200 MHz

**MA4EX950M-1225T
V3**

SOT-25 Package Outline^{1,2}



1. Dimensions do not include mold flash, protrusion or gate burrs which shall not exceed 0.0098 in (.25mm) per side.
2. Lead Coplanarity is 0.003 (0.08) max.

SOT-25 Dimensions

Dim	Inches		Millimeters	
	Min.	Max.	Min.	Max.
A		.122	2.70	3.10
B	.100	.118	2.54	3.00
C	b	.051	b	1.30
D	.063 REF.		1.60 REF.	
E	.032	.043	.80	1.10
F	.014	.020	.35	.50
G	.003	b	.08	—
H	.000	.006	.00	.15
J	.018 REF.		.45 REF.	

Ordering Information

Part Number	Package
MA4EX950M-1225T	Tape and Reel