

Ceramic Frequency Mixer WIDE BAND

MCA-35LH+ MCA-35LH

Level 10 (LO Power+10 dBm) 500 to 3500 MHz



Maximum Ratings

Operating Temperature	-55°C to 100°C
Storage Temperature	-55°C to 100°C
RF Power	50 mW
IF Current	40 mA

Pin Connections

LO	10
RF	5
IF	3
GROUND	1,2,4,6,7,8,9

Features

- wide bandwidth, 500 to 3500 MHz
- excellent isolation, 30 dB typ. (1800-2500 MHz)
- good matching 2:1 VSWR typ. (over 1800-2800 MHz)
- small size 0.25"x0.3"x0.2"
- aqueous washable
- triple balanced mixer
- protected by US Patent 6,917,796

CASE STYLE: DZ883

PRICE: \$7.95 ea. QTY.(10-49)

+ RoHS compliant in accordance with EU Directive (2002/95/EC)

The +Suffix identifies RoHS Compliance. See our web site for RoHS Compliance methodologies and qualifications.

Applications

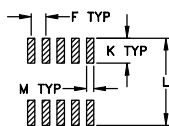
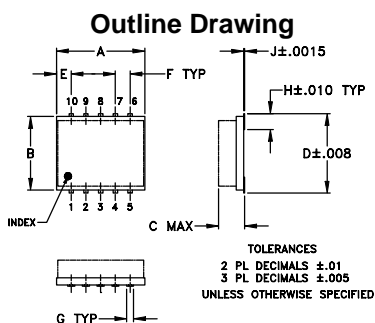
- cellular
- PCN
- PDC
- DECT
- PHS

Electrical Specifications (T_{AMB}=-55°C to 100°C)

FREQUENCY (MHz)	CONVERSION LOSS (dB)			LO-RF ISOLATION (dB)		LO-IF ISOLATION (dB)		IP3 at center band (dBm)
	LO/RF f _c -f _u	IF	\bar{X} σ Max.	Typ.	Min.	Typ.	Min.	
500-3500	10-1500	6.9	0.1	8.9	•	•		
500-800	10-300	6.3	0.1	7.7	18	11	32	25
800-1000	10-200	7.1	0.1	8.6	24	17	30	23
1000-1800	10-800	7.3	0.1	8.9	29	20	28	20
1800-2000	10-200	6.3	0.1	8.2	32	25	30	23
1800-2500	10-700	5.8	0.1	8.2	32	22	30	21
2000-3500	10-1500	6.5	0.1	8.7	29	17	26	15

1 dB COMPR. +6 dBm typ.

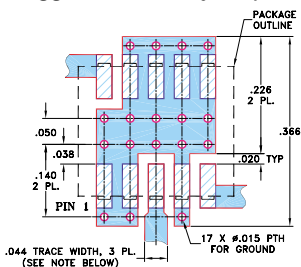
• see individual band specs



Outline Dimensions (inch / mm)

A	B	C	D	E	F	G
.30	.250	.190	.274	.050	.050	.012
7.62	6.35	4.83	6.96	1.27	1.27	0.30
H	J	K	L	M	wt	
.057	.004	.085	.296	.030	grams	
1.45	0.10	2.16	7.52	0.76	0.5	

Demo Board MCL P/N: TB-144 Suggested PCB Layout (PL-045)



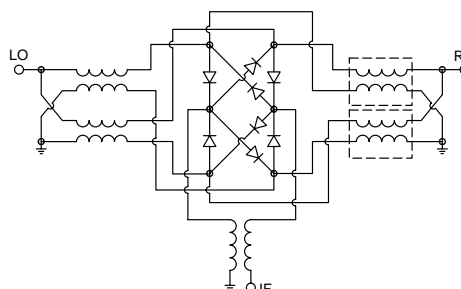
- NOTES: 1. TRACE WIDTH IS SHOWN FOR ROGERS RO4350B WITH DIELECTRIC THICKNESS .020" ± .0015"; COPPER: 1/2 OZ. EACH SIDE. FOR OTHER MATERIALS TRACE WIDTH MAY NEED TO BE MODIFIED.
2. BOTTOM SIDE OF THE PCB IS CONTINUOUS GROUND PLANE.

- DENOTES PCB COPPER LAYOUT WITH SMOBC (SOLDER MASK OVER BARE COPPER)
■ DENOTES COPPER LAND PATTERN FREE OF SOLDER MASK

Typical Performance Data

Frequency (MHz)	Conversion Loss (dB)		Isolation L-R (dB)		Isolation L-I (dB)		VSWR RF Port (:1)		VSWR LO Port (:1)	
	LO	LO +10dBm	LO	LO +10dBm	LO	LO +10dBm	LO	LO +10dBm	LO	LO +10dBm
	RF	LO	RF	LO	RF	LO	RF	LO	RF	LO
500.00	530.00	6.10	16.44	16.44	1.53	1.46				
600.00	630.00	6.10	17.92	17.92	1.83	1.23				
700.00	730.00	6.04	20.26	20.26	2.24	1.16				
800.00	830.00	6.58	23.10	23.10	2.77	1.17				
1000.00	1030.00	7.04	28.73	28.73	3.23	1.30				
1300.00	1330.00	7.00	31.09	31.09	2.56	1.49				
1500.00	1530.00	7.71	28.68	28.68	1.99	1.65				
1600.00	1630.00	7.50	28.46	28.46	2.11	1.66				
1700.00	1730.00	6.81	30.31	30.31	2.04	1.57				
1800.00	1830.00	6.41	31.73	31.73	1.95	1.58				
2000.00	2030.00	6.20	32.70	32.70	1.69	1.64				
2300.00	2330.00	6.19	31.39	31.39	1.61	1.61				
2500.00	2530.00	6.34	30.15	30.15	2.25	1.78				
2700.00	2730.00	6.73	30.75	30.75	3.06	1.72				
2900.00	2930.00	7.09	31.56	31.56	3.22	1.79				
3000.00	3030.00	7.12	30.82	30.82	3.34	1.75				
3100.00	3130.00	7.32	31.63	31.63	3.34	1.63				
3300.00	3330.00	7.18	31.03	31.03	3.19	1.43				
3400.00	3430.00	6.86	29.04	29.04	3.05	1.45				
3500.00	3530.00	6.75	26.75	26.75	2.75	1.42				

Electrical Schematic



MCA-35LH+ MCA-35LH

Performance Charts

