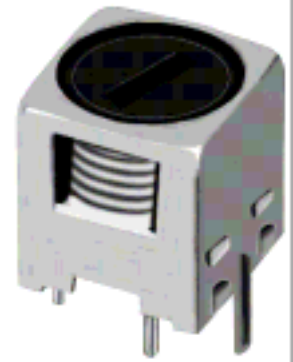
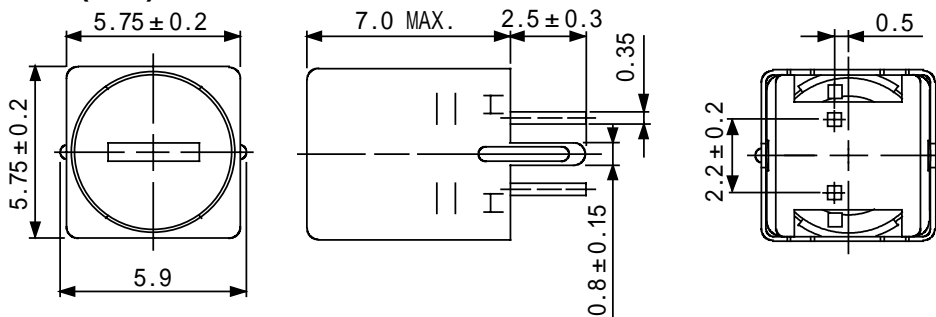


Type: MG56
Product Description

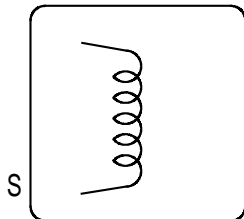
- 5.95 × 5.95mm Max.(L × W), 7.0mm Max. Height.
- Inductance:100mH Max.
- Operating frequency:500kHz Max.
- In addition to the reference versions of parameters shown here, custom designs are available to meet your exact requirements


Feature

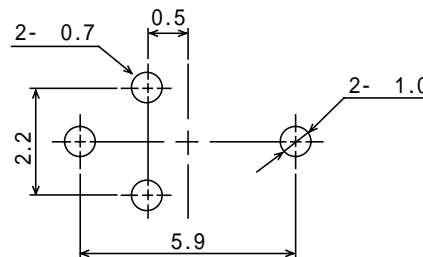
- Magnetically shielded variable high inductance construction type.
- RoHS Compliance.

Dimensions (mm)


- * Dimension does not include solder used on coil.
- * Pin pitch should be measured at the root of terminal.

Connection (Bottom View)


“ S ” is winding start.

Terminal Layout (mm)

Specification (Part No. KS-MG56)

Item	(1-2)	Measuring Condition
Inductance	52mH±5% Within	79.6kHz
Unloaded Qu	28(Ref.)	79.6kHz