

3 Watts 2 :1 Wide Input Range DC/DC Converters

Single and Dual Outputs

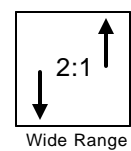
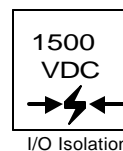
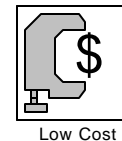
Key Features

- High Efficiency up to 82%
- 2:1 Input Range
- I/O Isolation 1500VDC
- Industry Standard Pinout
- SMT Technology
- Short Circuit Protection
- EMI Complies With EN55022 Class A
- MTBF > 1,000,000 Hours

MIW1500-Series power modules are low-profile dc-dc converters that operate over input voltage ranges of 4.5-9VDC, 9-18VDC, 18-36VDC and provide precisely regulated output voltages of 5V, 12V, { 12V and { 15V.

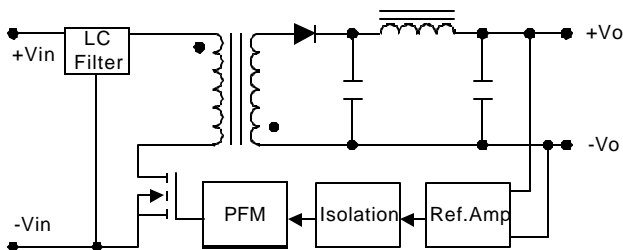
The -25] to +71] operating temperature range makes it ideal for data communication equipments, mobile battery driven equipments, distributed power systems, telecommunication equipments, mixed analog/digital subsystems, process/machine control equipments, computer peripheral systems and industrial robot systems.

The modules have a maximum power rating of 3W and a typical full-load efficiency of 82%, continuous short circuit, 60mA output ripple, built-in filtering for both input and output minimizes the need for external filtering.

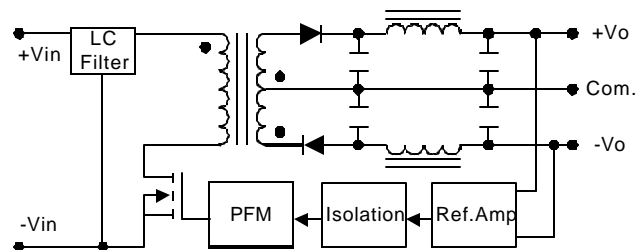


Block Diagram

Single Output



Dual Output



Model Selection Guide

Model Number	Input Voltage	Output Voltage	Output Current		Input Current		Reflected Ripple Current	Efficiency
			Max.	Min.	@Max. Load	@No Load		
	VDC	VDC	mA	mA	mA (Typ.)	mA (Typ.)	mA (Typ.)	% (Typ.)
MIW1512	5 (4.5 ~ 9)	5	600	60	833	40	100	72
MIW1513		12	250	25	789			76
MIW1516		{ 12	{ 125	{ 12.5	779			77
MIW1517		{ 15	{ 100	{ 10	779			77
MIW1522	12 (9 ~ 18)	5	600	60	329	20	30	76
MIW1523		12	250	25	313			80
MIW1526		{ 12	{ 125	{ 12.5	313			80
MIW1527		{ 15	{ 100	{ 10	313			80
MIW1532	24 (18 ~ 36)	5	600	60	160	5	15	78
MIW1533		12	250	25	152			82
MIW1536		{ 12	{ 125	{ 12.5	152			82
MIW1537		{ 15	{ 100	{ 10	152			82

Absolute Maximum Ratings

Parameter	Min.	Max.	Unit	
Input Surge Voltage (1000 mS)	5VDC Input Models	-0.7	11	VDC
	12VDC Input Models	-0.7	25	VDC
	24VDC Input Models	-0.7	50	VDC
Lead Temperature (1.5mm from case for 10	---	260]	
Internal Power Dissipation	---	2,500	mW	

Exceeding the absolute maximum ratings of the unit could cause damage. These are not continuous operating ratings.

Environmental Specifications

Parameter	Conditions	Min.	Max.	Unit
Operating Temperature	Ambient	-25	+71]
Operating Temperature	Case	-25	+90]
Storage Temperature		-40	+125]
Humidity		---	95	%
Cooling	Free-Air Convection			
Conducted EMI	EN55022 Class A			

Note :

- Specifications typical at $T_a=+25]$, resistive load, nominal input voltage, rated output current unless otherwise noted.
- Transient recovery time is measured to within 1% error band for a step change in output load of 75% to 100%.
- Ripple & Noise measurement bandwidth is 0-20 MHz.
- These power converters require a minimum output loading to maintain specified regulation.
- Operation at no-load will not damage these units. However, they may not meet all specifications.
- All DC/DC converters should be externally fused at the front end for protection.
- Other input and output voltage may be available, please contact factory.
- Specifications subject to change without notice.

Input Specifications

Parameter	Model	Min.	Typ.	Max.	Unit
Start Voltage	5V Input Models	3.5	4	4.5	VDC
	12V Input Models	4.5	7	9	
	24V Input Models	8	12	18	
Under Voltage Shutdown	5V Input Models	---	3.5	4	
	12V Input Models	---	6.5	8.5	
	24V Input Models	---	11	17	
Reverse Polarity Input Current	All Models	---	---	1	A
Short Circuit Input Power		---	1000	2000	mW
Input Filter		Pi Filter			

Output Specifications

Parameter	Conditions	Min.	Typ.	Max.	Unit
Output Voltage Accuracy		---	{ 0.5	{ 2.0	%
Output Voltage Balance	Dual Output , Balanced Loads	---	{ 0.5	{ 2.0	%
Line Regulation	Vin=Min. to Max.	---	{ 0.2	{ 0.5	%
Load Regulation	Io=10% to 100%	---	{ 0.2	{ 0.5	%
Ripple & Noise (20MHz)		---	45	60	mV P-P
Ripple & Noise (20MHz)	Over Line,Load & Temp	---	---	100	mV P-P
Ripple & Noise (20MHz)		---	---	15	mV rms.
Over Power Protection		120	---	---	%
Transient Recovery Time	25% Load Step Change	---	300	500	uS
Transient Response Deviation		---	{ 3	{ 6	%
Temperature Coefficient		---	{ 0.01	{ 0.02	%/]
Output Short Circuit	Continuous				

General Specifications

Parameter	Conditions	Min.	Typ.	Max.	Unit
Isolation Voltage Rated	60 Seconds	1500	---	---	VDC
Isolation Voltage Test	Flash Tested for 1 Second	1650	---	---	VDC
Isolation Resistance	500VDC	1000	---	---	M[
Isolation Capacitance	100KHz,1V	---	---	500	pF
Switching Frequency		---	300	---	KHz
MTBF	MIL-HDBK-217F @ 25] , Ground Benign	1000	---	---	K Hours

Capacitive Load

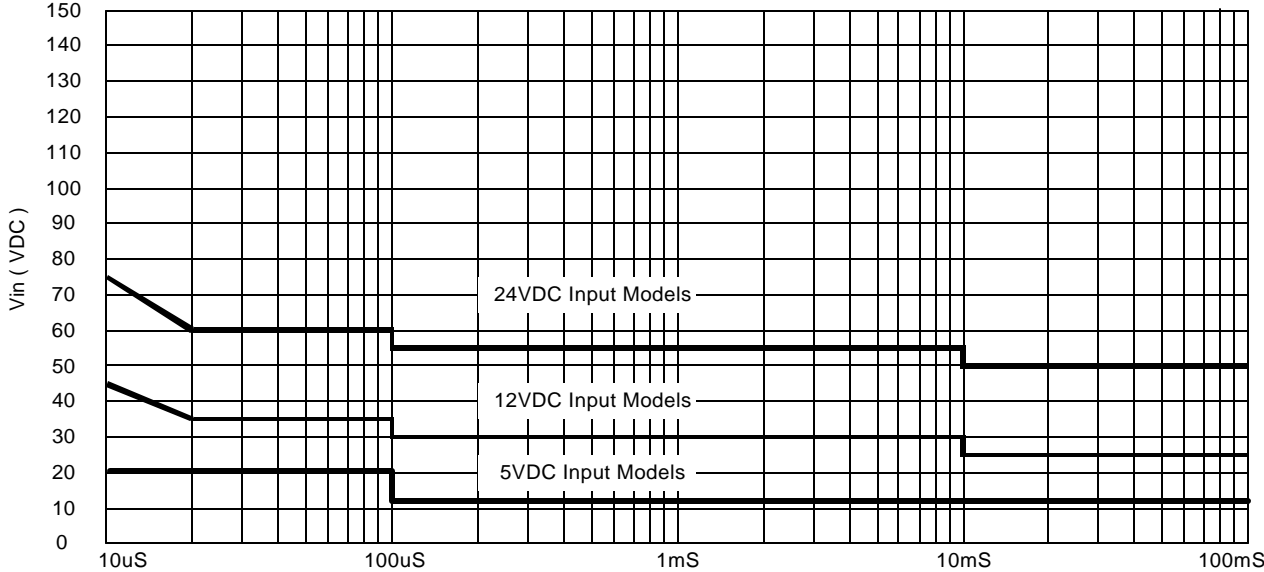
Models by Vout	5V	12V	{ 12V #	{ 15V #	Unit
Maximum Capacitive Load	470	470	220	220	uF

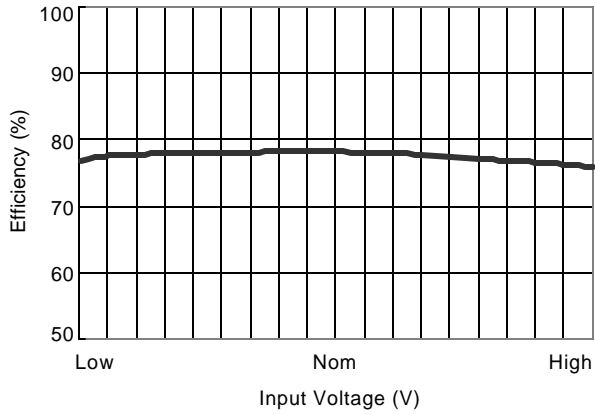
Note: # For each output .

Input Fuse Selection Guide

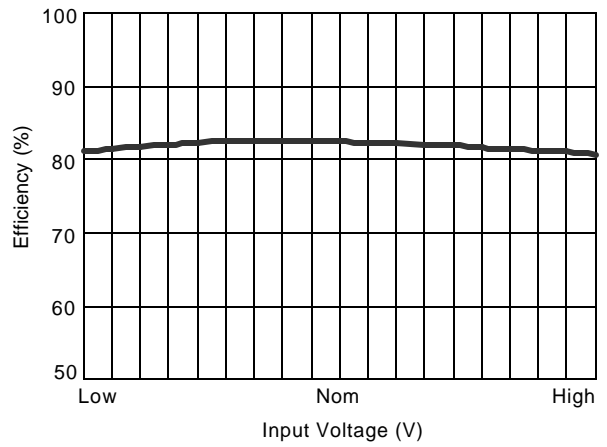
5V Input Models	12V Input Models	24V Input Models
1500mA Slow - Blow Type	700mA Slow - Blow Type	350mA Slow - Blow Type

Input Voltage Transient Rating

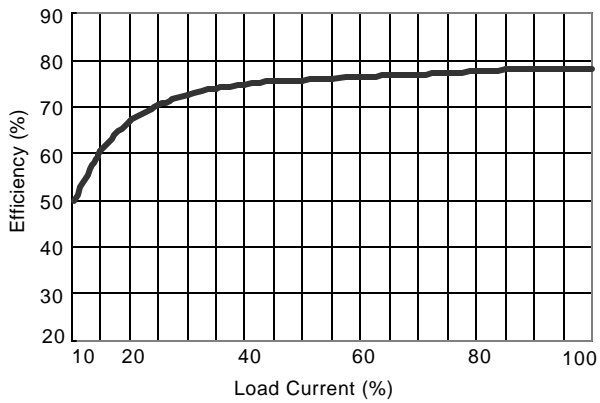




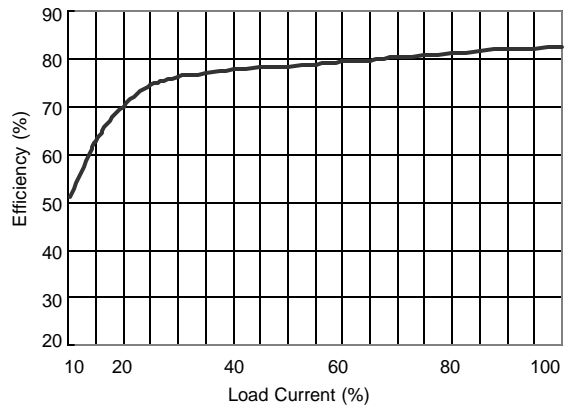
Efficiency vs Input Voltage (Single Output)



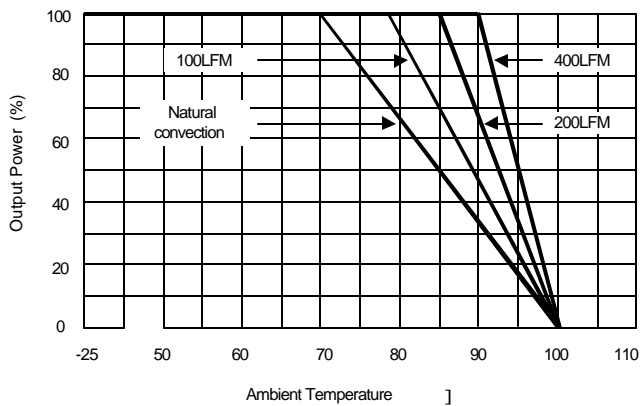
Efficiency vs Input Voltage (Dual Output)



Efficiency vs Output Load (Single Output)



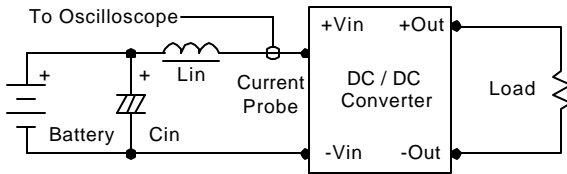
Efficiency vs Output Load (Dual Output)



Derating Curve

Test Configurations

Input Reflected-Ripple Current Test Setup



Input reflected-ripple current is measured with an inductor L_{in} (4.7uH) and C_{in} (220uF, ESR < 1.0[at 100 KHz) to simulate source impedance.

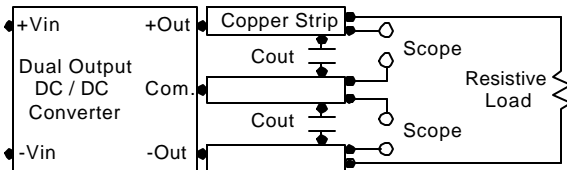
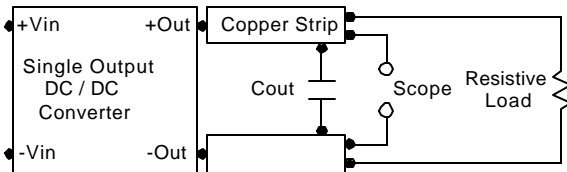
Capacitor C_{in} , offsets possible battery impedance.

Current ripple is measured at the input terminals of the module, measurement bandwidth is 0- 500 KHz.

Peak-to-Peak Output Noise Measurement Test

Use a C_{out} 0.47uF ceramic capacitor.

Scope measurement should be made by using a BNC socket, measurement bandwidth is 0- 20 MHz. Position the load between 50 mm and 75 mm from the DC/DC Converter.



Design & Feature Considerations

Maximum Capacitive Load

The MIW1500 series has limitation of maximum connected capacitance at the output.

The power module may be operated in current limiting mode during start-up, affecting the ramp-up and the startup time.

For optimum performance we recommend 220uF maximum capacitive load for dual outputs and 470uF capacitive load for single outputs.

The maximum capacitance can be found in the data.

Overcurrent Protection

To provide protection in a fault (output overload) condition, the unit is equipped with internal current limiting circuitry and can endure current limiting for an unlimited duration. At the point of current-limit inception, the unit shifts from voltage control to current control. The unit operates normally once the output current is brought back into its specified range.

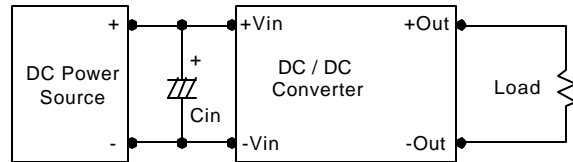
Input Source Impedance

The power module should be connected to a low ac-impedance input source. Highly inductive source impedances can affect the stability of the power module.

In applications where power is supplied over long lines and output loading is high, it may be necessary to use a capacitor at the input to ensure startup.

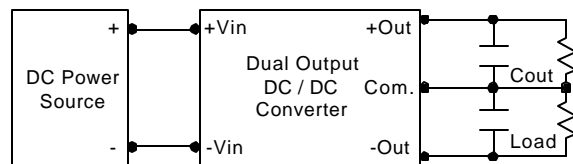
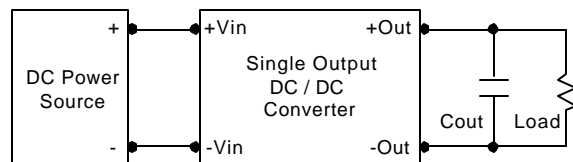
Capacitor mounted close to the power module helps ensure stability of the unit, it is recommended to use a good quality low Equivalent Series Resistance (ESR < 1.0[at 100 KHz) capacitor of a 8.2uF for the 5V input devices, a 3.3uF for the 12V input devices and a 1.5uF for the 24V devices.

Output Ripple Reduction



A good quality low ESR capacitor placed as close as practicable across the load will give the best ripple and noise performance.

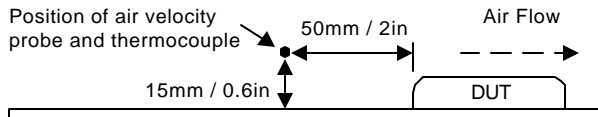
To reduce output ripple, it is recommended to use 3.3uF capacitors at the output.



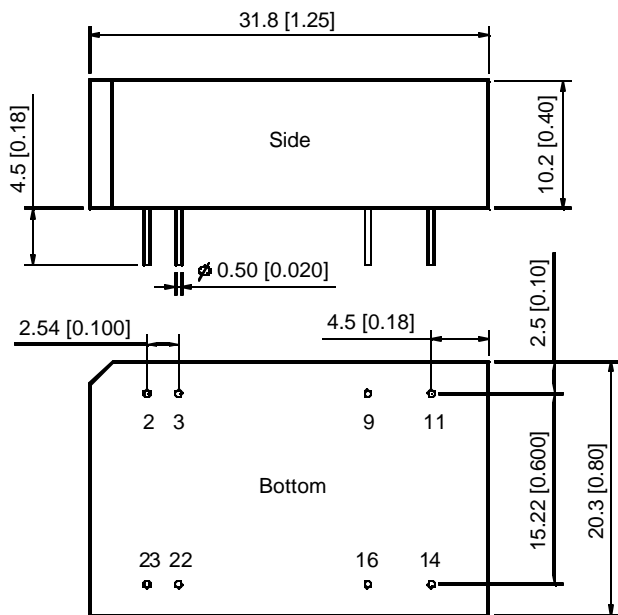
Thermal Considerations

Many conditions affect the thermal performance of the power module, such as orientation, airflow over the module and board spacing. To avoid exceeding the maximum temperature rating of the components inside the power module, the case temperature must be kept below 90°C.

The derating curves are determined from measurements obtained in an experimental apparatus.



Mechanical Dimensions

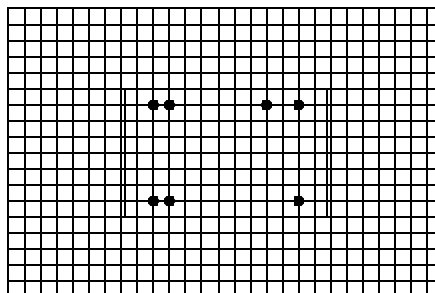


Tolerance	Millimeters	Inches
	.X{ 0.25	.XX{ 0.01
	.XX{ 0.25	.XXX{ 0.01
Pin	{ 0.05	{ 0.002

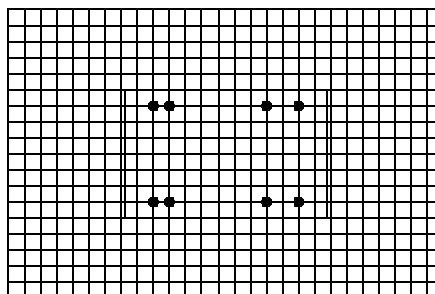
Connecting Pin Patterns

Top View (2.54 mm / 0.1 inch grids)

Single Output



Dual Output



Pin Connections

Pin	Single Output	Dual Output
2	- Vin	- Vin
3	- Vin	- Vin
9	No Pin	Common
11	NC	- Vout
14	+ Vout	+ Vout
16	- Vout	Common
22	+ Vin	+ Vin
23	+ Vin	+ Vin

NC: No Connection

Physical Characteristics

Case Size : 31.8*20.3*10.2 mm
1.25*0.8*0.4 inches

Case Material : Non-Conductive Black Plastic

Weight : 12.4g

Flammability : UL94V-0

The MIW1500 converter is encapsulated in a low thermal resistance molding compound that has excellent resistance/electrical characteristics over a wide temperature range or in high humidity environments. The encapsulant and unit case are both rated to UL 94V-0 flammability specifications. Leads are tin plated for improved solderability.