

Monolithic crystal filter

MQF10.7-0240/05



Application

- 10 pol filter
- i.f.- filter
- use in mobile and stationary transceivers

Limiting values

		Unit	Value
Center frequency	f_0	MHz	10.7
Insertion loss		dB	≤ 6.0
Pass band at 6.0 dB		kHz	± 1.20
Ripple in pass band	$f_0 \pm 0.90$ kHz	dB	≤ 2.0
Stop band attenuation	$f_0 \pm 3.3$ kHz	dB	≥ 75
	$f_0 \pm 4$ kHz	dB	> 90
Alternate attenuation	$f_0 \pm 4$ kHz...1MHz	dB	> 90

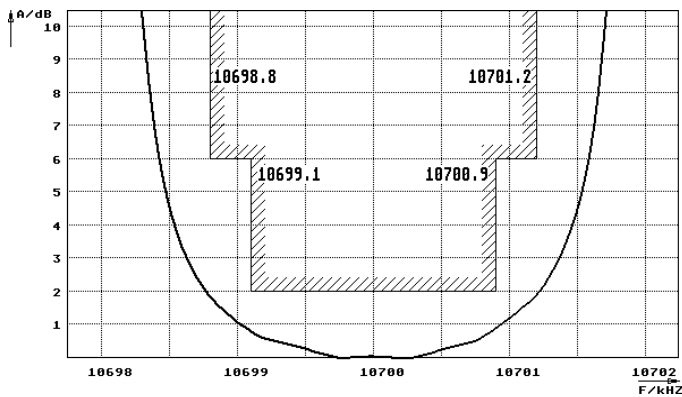
Terminating impedance Z

R1 C1	Ohm/pF	500 20
R2 C2	Ohm/pF	500 20

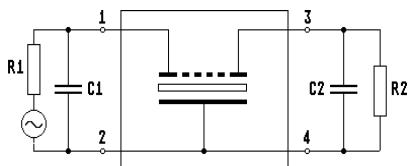
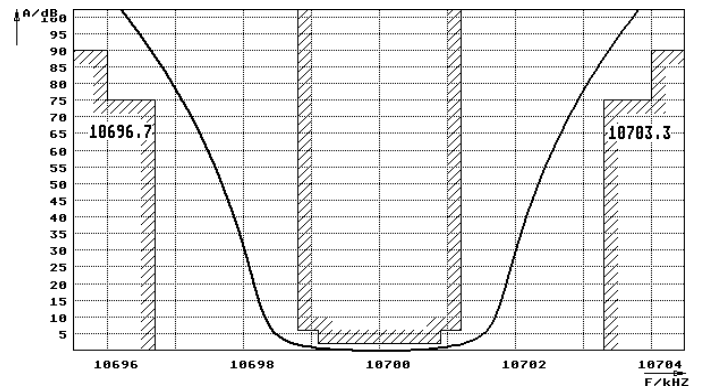
Operating temp. range	$^{\circ}\text{C}$	-20... +70
-----------------------	--------------------	------------

Characteristics MQF10.7-0240/05

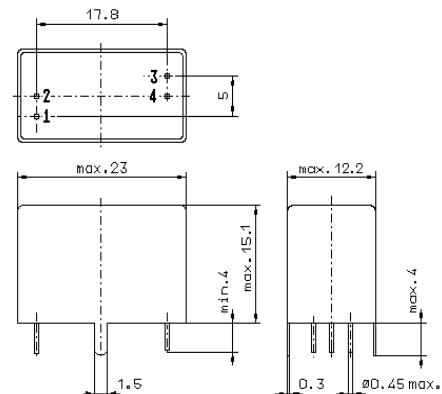
Pass band



Stop band



Pin connections: 1 Input
2 Input-E
3 Output
4 Output-E



GV6.2