

Monolithic crystal filter

MQF10.7-0630/04



Application

- 8 pol filter
- i.f.- filter
- use in mobile and stationary transceivers

Limiting values

		Unit	Value
Center frequency	f_0	MHz	10.7
Insertion loss		dB	≤ 4.0
Pass band at 6.0 dB		kHz	± 3.15
Ripple in pass band	$f_0 \pm 2.50$ kHz	dB	≤ 2.0
Stop band attenuation	$f_0 \pm 7.0$ kHz	dB	≥ 60
	$f_0 \pm 8.33$ kHz	dB	> 75
Alternate attenuation	$f_0 \pm 25$ kHz	dB	> 90
Group delay distortion	$f_0 \pm 2.50$ kHz	μ s	< 160

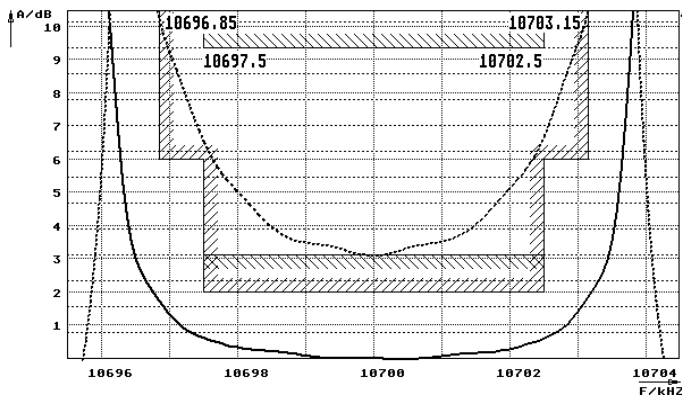
Terminating impedance Z

R1 C1	Ohm/pF	910 25
R2 C2	Ohm/pF	910 25

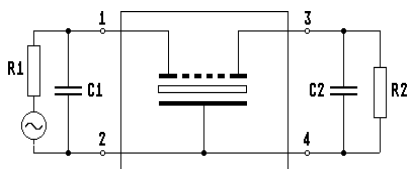
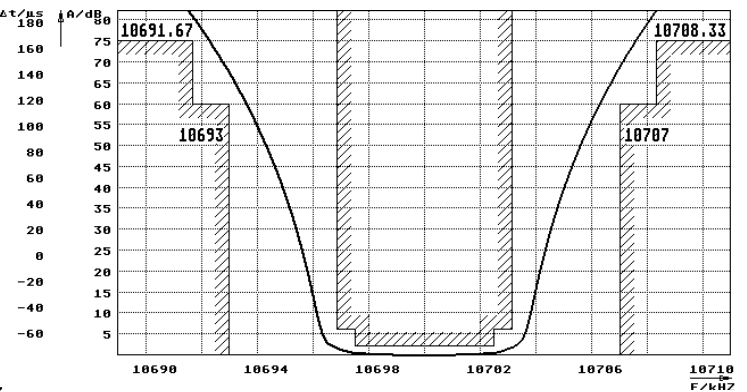
Operating temp. range	$^{\circ}$ C	-40... +85
-----------------------	--------------	------------

Characteristics MQF10.7-0630/04

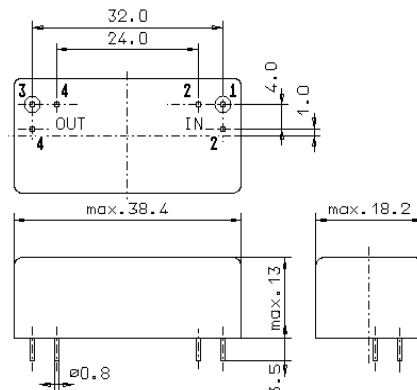
Pass band



Stop band



Pin connections: 1 Input
2 Input-E
3 Output
4 Output-E



GM17