

# Monolithic crystal filter

## MQF10.7-0960/07



### Application

- 8 pol filter
- i.f.- filter
- use in mobile and stationary transceivers

### Limiting values

		Unit	Value
Center frequency	$f_0$	MHz	10.7
Insertion loss		dB	$\leq 3.0$
Pass band at 3.0 dB		kHz	$\pm 4.80$
Ripple in pass band	$f_0 \pm 4.00$ kHz	dB	$\leq 2.0$
Stop band attenuation	$f_0 \pm 12.5$ kHz	dB	$\geq 70$
Alternate attenuation		dB	$> 80$ except spurious
Group delay distortion	$f_0 \pm 4.4$ kHz	$\mu s$	$< 80$
	$f_0 \pm 2.2$ kHz	$\mu s$	$< 20$

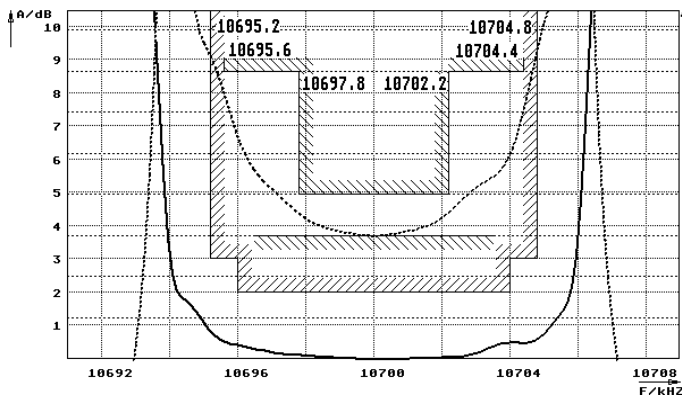
### Terminating impedance Z

R1    C1	Ohm/pF	470    15
R2    C2	Ohm/pF	470    15

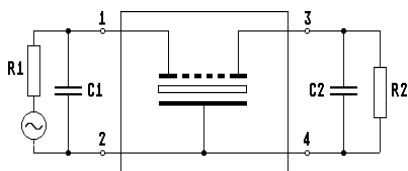
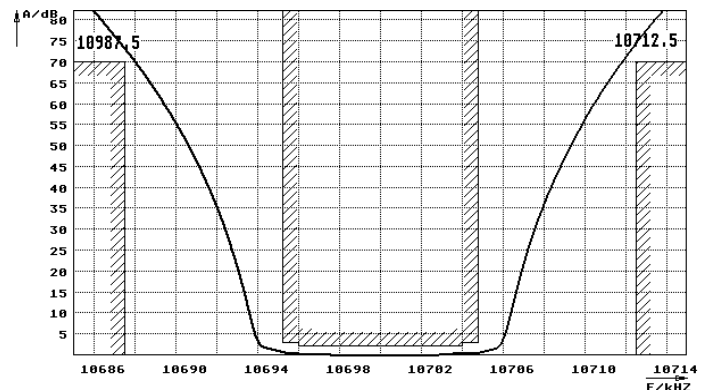
Operating temp. range	$^{\circ}C$	-20... +70
-----------------------	-------------	------------

### Characteristics MQF10.7-0960/07

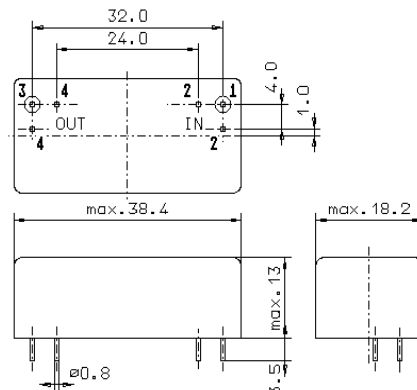
#### Pass band



#### Stop band



Pin connections: 1 Input  
2 Input-E  
3 Output  
4 Output-E



GM17