

Monolithic crystal filter

MQF10.7-1200/13



Application

- 2 pol filter
- i.f.- filter
- use in mobile and stationary transceivers

Limiting values

		Unit	Value
Center frequency	f_0	MHz	10.7
Insertion loss		dB	≤ 2.0
Pass band at 3.0 dB		kHz	± 6.00
Ripple in pass band	$f_0 \pm 3.00$ kHz	dB	≤ 0.5
Stop band attenuation	$f_0 \pm 25$ kHz	dB	≥ 20
Alternate attenuation		dB	> 40
Spurious responses		dB	> 15

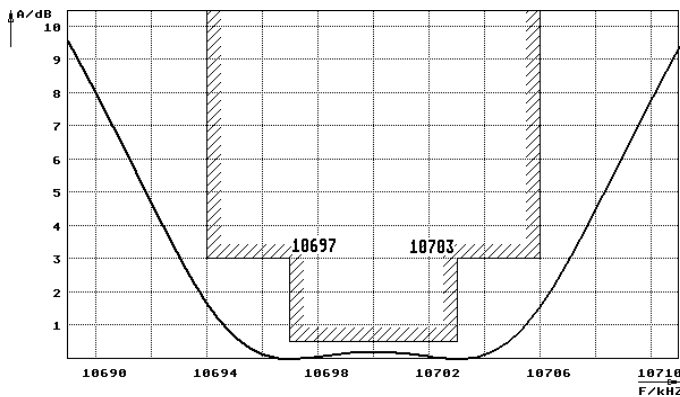
Terminating impedance Z

R1 C1	Ohm/pF	2500 3
R2 C2	Ohm/pF	2500 3

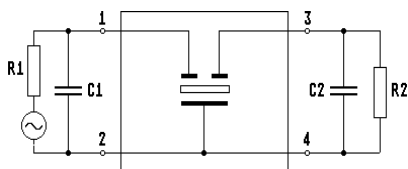
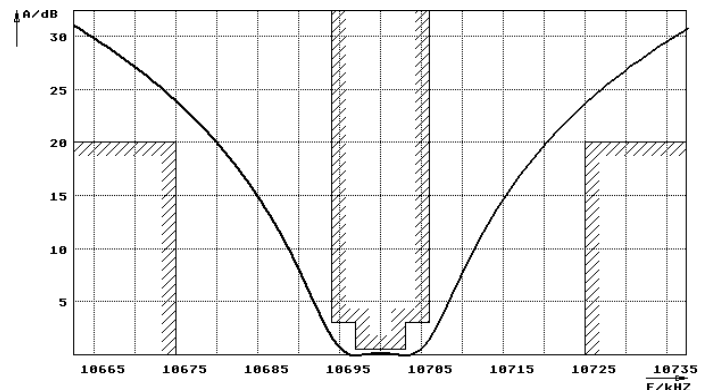
Operating temp. range	° C	-20... +70
-----------------------	-----	------------

Characteristics MQF10.7-1200/13

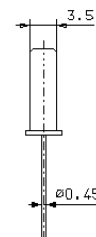
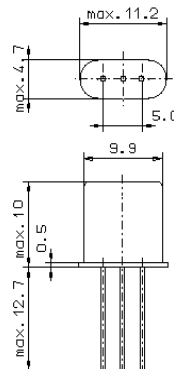
Pass band



Stop band



Pin connections: 1 Input
2 Input-E
3 Output
4 Output-E



GH15