

Monolithic crystal filter

MQF10.7-3000/01



Application

- 2 pol filter
- i.f.- filter
- use in mobile and stationary transceivers

Limiting values

		Unit	Value
Center frequency	f_0	MHz	10.7
Insertion loss		dB	≤ 1.5
Pass band at 3.0 dB		kHz	± 15.00
Ripple in pass band	$f_0 \pm 10.00$ kHz	dB	≤ 0.5
Stop band attenuation	$f_0 \pm 50$ kHz	dB	≥ 15
Alternate attenuation	$f_0 + 0.3...1$ MHz	dB	> 30
	$f_0 - 0.3...1$ MHz	dB	> 40

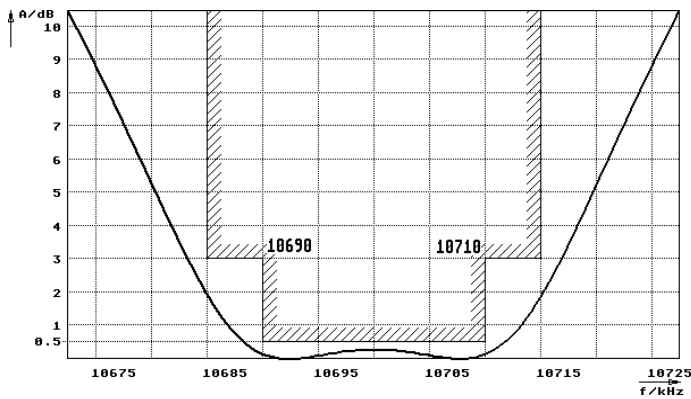
Terminating impedance Z

R1 C1	Ohm/pF	5000 0
R2 C2	Ohm/pF	5000 0

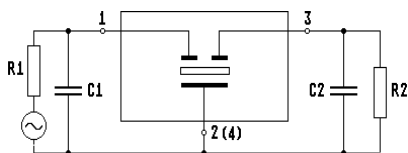
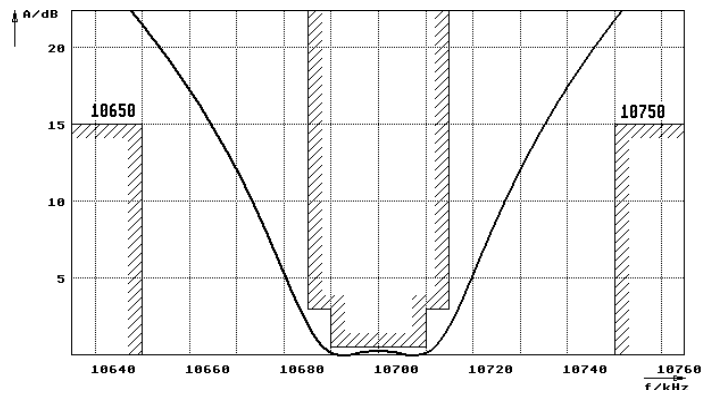
Operating temp. range	$^{\circ}\text{C}$	-20... +70
-----------------------	--------------------	------------

Characteristics MQF10.7-3000/01

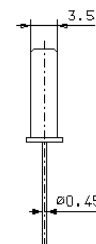
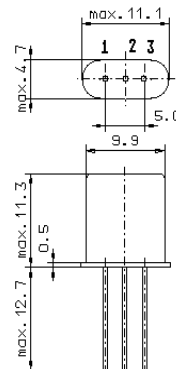
Pass band



Stop band



Pin connections: 1 Input
2 Input-E
3 Output
4 Output-E



GH3