

Monolithic crystal filter

MQF10.7-3000/10



Application

- 10 pol filter
- i.f.- filter
- use in mobile and stationary transceivers

Limiting values

		Unit	Value
Center frequency	f_0	MHz	10.7
Insertion loss		dB	≤ 3.0
Pass band at 6.0 dB		kHz	± 15.00
Ripple in pass band	$f_0 \pm 12.00$ kHz	dB	≤ 2.0
Stop band attenuation	$f_0 \pm 30$ kHz	dB	≥ 75
	$f_0 \pm 35$ kHz	dB	> 90
Alternate attenuation	$f_0 \pm 35...300$ kHz	dB	> 90

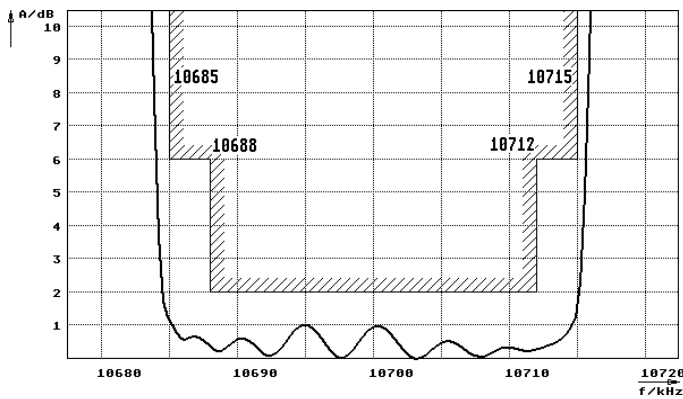
Terminating impedance Z

R1 C1	Ohm/pF	5500 -1
R2 C2	Ohm/pF	5500 -1

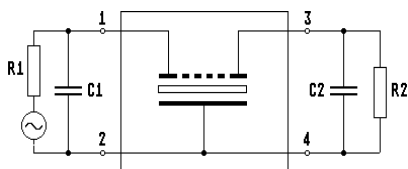
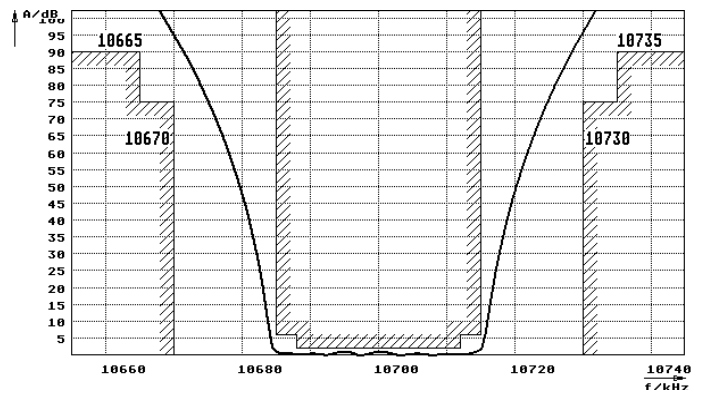
Operating temp. range	° C	-20... +70
-----------------------	-----	------------

Characteristics MQF10.7-3000/10

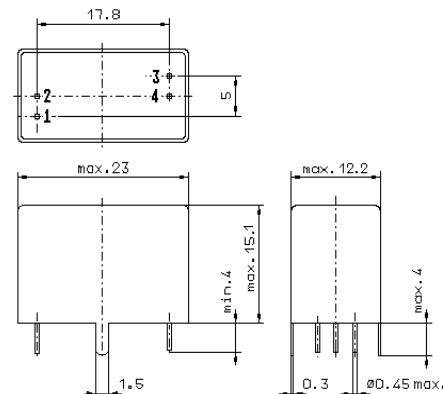
Pass band



Stop band



Pin connections: 1 Input
2 Input-E
3 Output
4 Output-E



GV6.2