

Monolithic crystal filter

MQF13.0-2500/01



Application

- 2 pol filter
- i.f.- filter
- use in mobile and stationary transceivers

Limiting values

		Unit	Value
Center frequency	f_0	MHz	13.0
Insertion loss		dB	≤ 4.0
Pass band at 1.0 dB		kHz	± 12.50
Ripple in pass band	$f_0 \pm 7.50$ kHz	dB	≤ 0.5
Stop band attenuation	$f_0 \pm 45$ kHz	dB	≥ 15
Alternate attenuation	$f_0 \pm 250$ kHz	dB	> 40
Spurious responses		dB	> 10

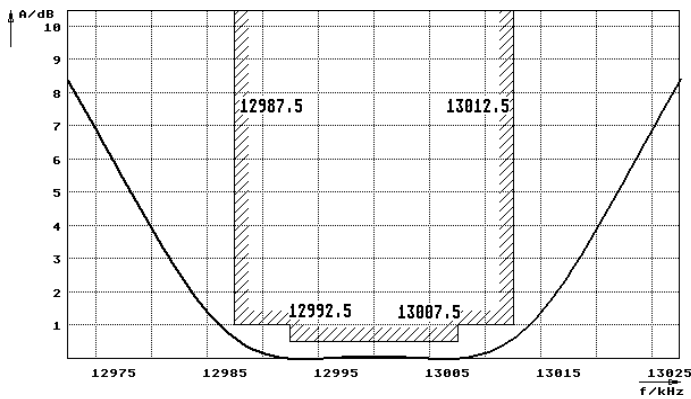
Terminating impedance Z

R1 C1	Ohm/pF	4000 -0.20
R2 C2	Ohm/pF	4000 -0.20

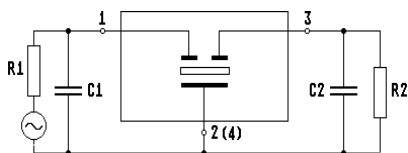
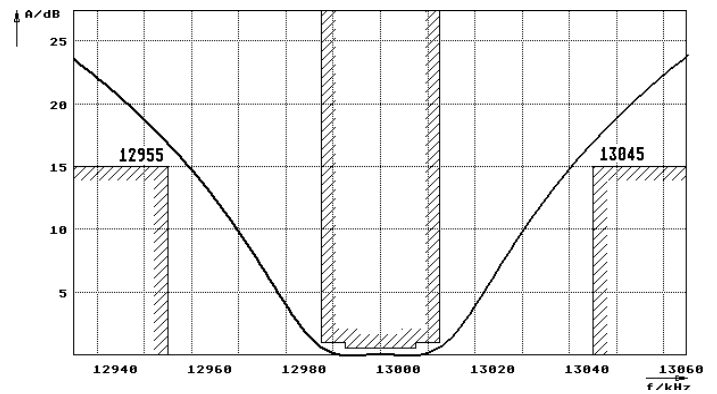
Operating temp. range	$^{\circ}\text{C}$	-10... +55
-----------------------	--------------------	------------

Characteristics MQF13.0-2500/01

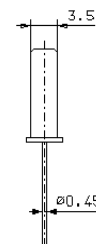
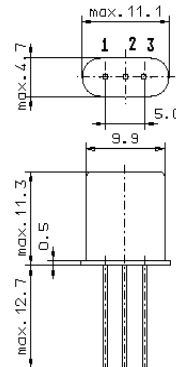
Pass band



Stop band



Pin connections: 1 Input
2 Input-E
3 Output
4 Output-E



GH3