

# Monolithic crystal filter

## MQF21.4-0750/10



### Application

- 2 pol filter
- i.f.- filter
- use in mobile and stationary transceivers

### Limiting values

		Unit	Value
Center frequency	$f_0$	MHz	21.4
Insertion loss		dB	$\leq 1.5$
Pass band at 3.0 dB		kHz	$\pm 3.75$
Ripple in pass band	$f_0 \pm 2.50$ kHz	dB	$\leq 0.5$
Stop band attenuation	$f_0 \pm 18$ kHz	dB	$\geq 20$
Alternate attenuation	$f_0 \pm 350$ kHz	dB	$> 35$

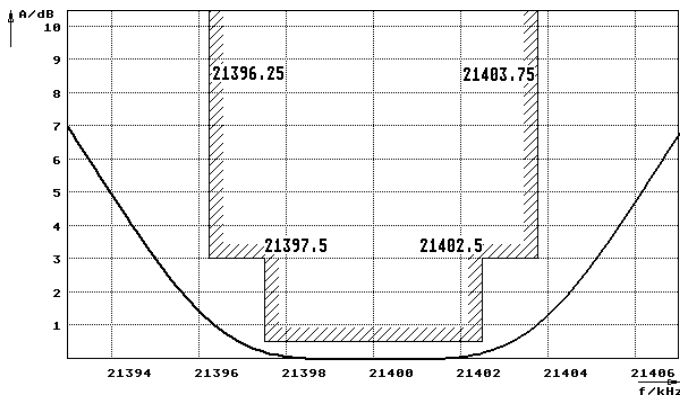
### Terminating impedance Z

R1    C1	Ohm/pF	1600    3
R2    C2	Ohm/pF	1600    3

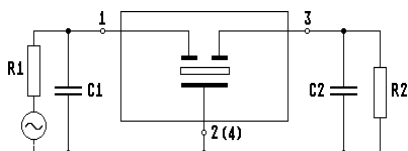
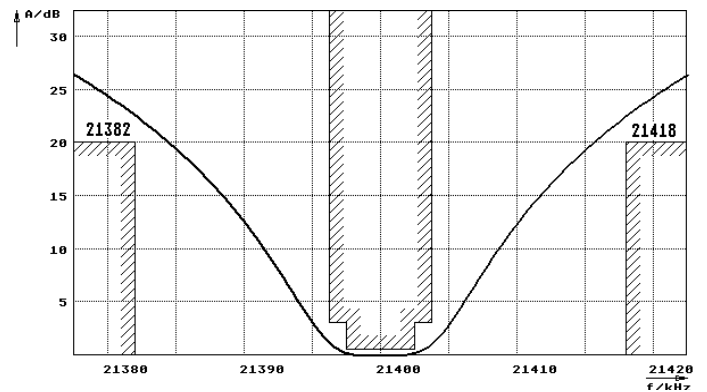
Operating temp. range	° C	-20... +70
-----------------------	-----	------------

### Characteristics MQF21.4-0750/10

#### Pass band



#### Stop band



Pin connections: 1 Input  
2 Input-E  
3 Output  
4 Output-E

