

# Monolithic crystal filter

## MQF21.4-3000/02



### Application

- 4 pol filter
- i.f.- filter
- use in mobile and stationary transceivers

### Limiting values

		Unit	Value
Center frequency	$f_0$	MHz	21.4
Insertion loss		dB	$\leq 2.0$
Pass band at 3.0 dB		kHz	$\pm 15.00$
Ripple in pass band	$f_0 \pm 10.00$ kHz	dB	$\leq 1.5$
Stop band attenuation	$f_0 \pm 50$ kHz	dB	$\geq 40$
	$f_0 \pm 100$ kHz	dB	$> 60$
Spurious responses		dB	$> 14$

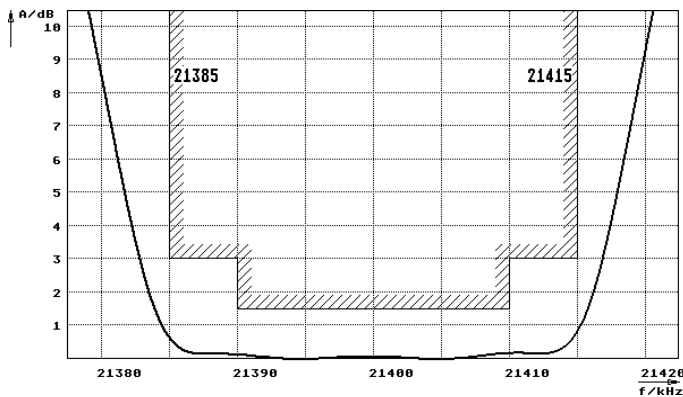
### Terminating impedance Z

R1    C1		Ohm/pF	2200    0.50
R2    C2		Ohm/pF	2200    0.50
Coupling capacitance	Ck	pF	3.3

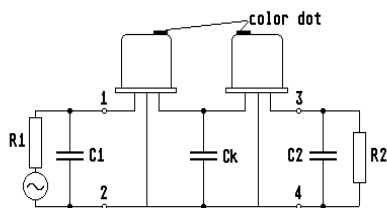
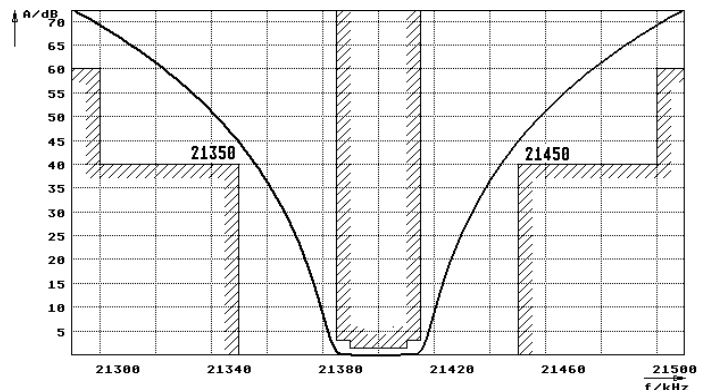
Operating temp. range		°C	-25... +70
-----------------------	--	----	------------

### Characteristics MQF21.4-3000/02

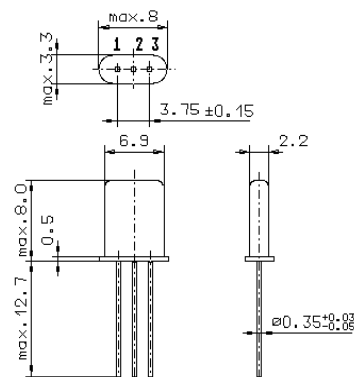
#### Pass band



#### Stop band



Pin connections: 1 Input  
2 Input-E  
3 Output  
4 Output-E



GH9