

Monolithic crystal filter

MQF44.982-0750/06



Application

- 4 pol filter
- i.f.- filter
- use in mobile and stationary transceivers

Limiting values

		Unit	Value
Center frequency	f_0	MHz	44.982
Insertion loss		dB	≤ 4.0
Pass band at 3.0 dB		kHz	± 3.75
Ripple in pass band	$f_0 \pm 2.50$ kHz	dB	≤ 1.0
Stop band attenuation	$f_0 \pm 12.5$ kHz	dB	≥ 30
Alternate attenuation	$f_0 \pm 910$ kHz	/dB	> 90

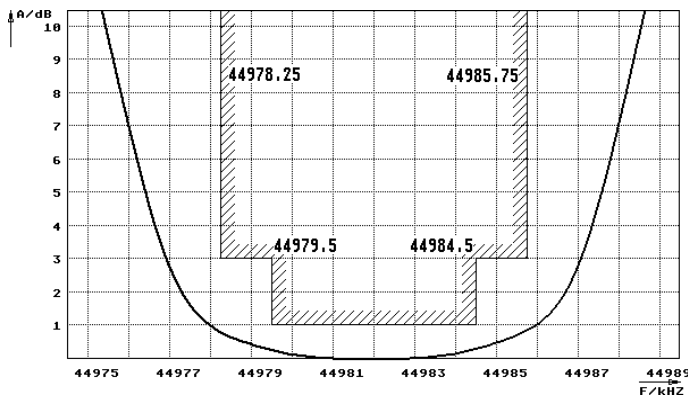
Terminating impedance Z

R1 C1		Ohm/pF	350 6.5
R2 C2		Ohm/pF	350 6.5
Coupling capacitance	Ck	pF	18

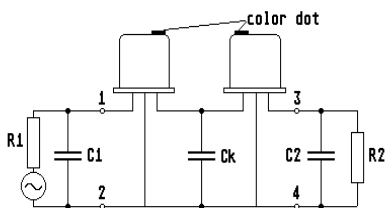
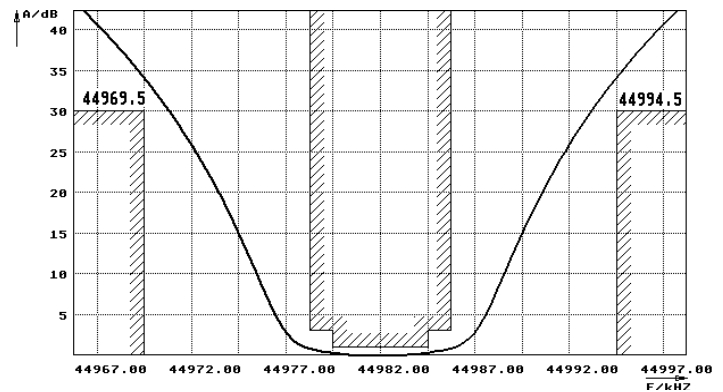
Operating temp. range		° C	-25... +70
-----------------------	--	-----	------------

Characteristics MQF44.982-0750/06

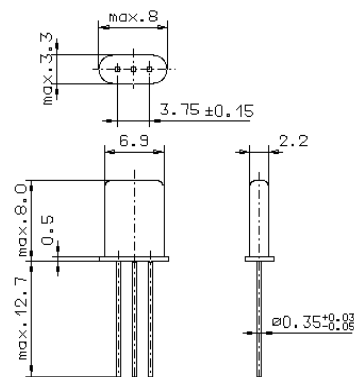
Pass band



Stop band



Pin connections: 1 Input
2 Input-E
3 Output
4 Output-E



GH9