

Monolithic crystal filter

MQF45.0-0750/03



Application

- 6 pol filter
- i.f.- filter
- use in mobile and stationary transceivers

Limiting values

		Unit	Value
Center frequency	f_0	MHz	45.0
Insertion loss		dB	≤ 6.0
Pass band at 3.0 dB		kHz	± 3.75
Ripple in pass band	$f_0 \pm 2.50$ kHz	dB	≤ 2.0
Stop band attenuation	$f_0 \pm 12.5$ kHz	dB	≥ 50
Alternate attenuation	$f_0 \pm 910$ kHz	dB	> 80

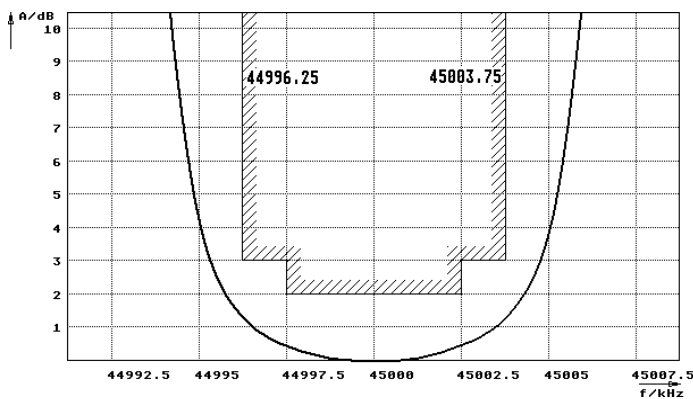
Terminating impedance Z

R1 C1	Ohm/pF	350 5
R2 C2	Ohm/pF	350 5

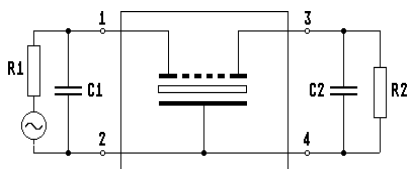
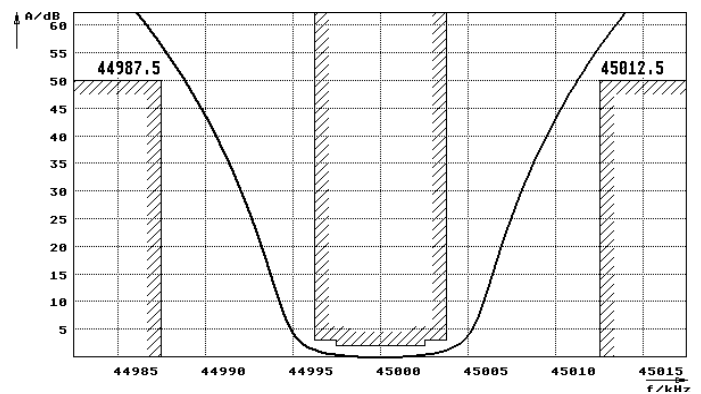
Operating temp. range	° C	-25... +70
-----------------------	-----	------------

Characteristics MQF45.0-0750/03

Pass band



Stop band



Pin connections: 1 Input
2 Input-E
3 Output
4 Output-E

