

Monolithic crystal filter

MQF45.0-1200/14



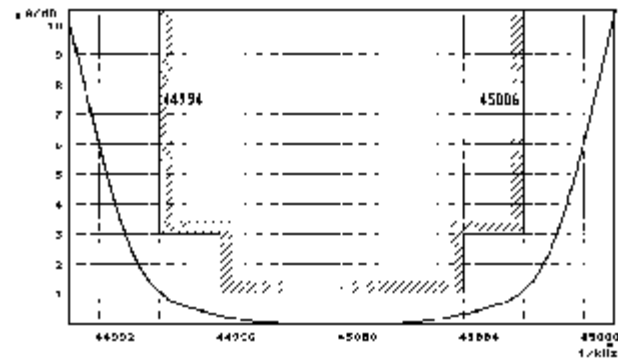
Application

- 4 pol filter
- i.f.- filter
- use in mobile and stationary transceivers

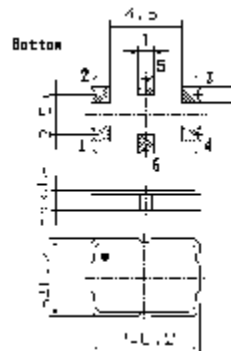
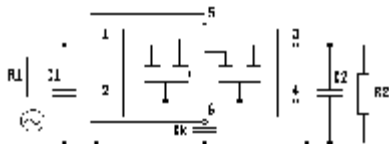
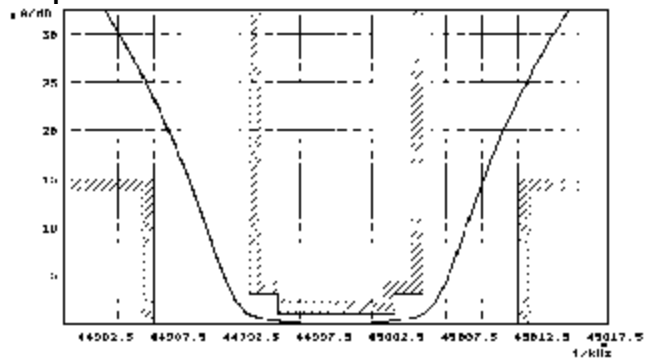
Limiting values		Unit	Value
Center frequency	f_0	MHz	45.0
Insertion loss		dB	≤ 2.5
Pass band at 3.0 dB		kHz	± 6.00
Ripple in pass band	$f_0 \pm 4.00$ kHz	dB	≤ 1.0
Stop band attenuation	$f_0 \pm 12.5$ kHz	dB	≥ 15
Alternate attenuation	$f_0 - 910$ kHz	dB	> 80
IMD at input -15 dBm		dB	> 90
Terminating impedance Z			
R1 C1		Ohm/pF	550 3.0
R2 C2		Ohm/pF	550 3.0
Coupling capacitance	Ck	pF	12.5
Operating temp. range		° C	-30... +60

Characteristics MQF45.0-1200/14

Pass band



Stop band



- Pin connections:
- 1 Input
 - 2, 4 Ground
 - 3 Output
 - 5 and 6 Coupling capacitance