

# Monolithic crystal filter

## MQF45.0-3000/09



### Application

- 4 pol filter
- i.f.- filter
- use in mobile and stationary transceivers

### Limiting values

		Unit	Value
Center frequency	$f_0$	MHz	45.0
Insertion loss		dB	$\leq 3.0$
Pass band at 6.0 dB		kHz	$\pm 15.00$
Ripple in pass band	$f_0 \pm 15.00$ kHz	dB	$\leq$ Gaussian
Stop band attenuation	$f_0 \pm 30$ kHz	dB	$\geq 25$
	$f_0 \pm 60$ kHz	dB	$> 50$
Spurious responses		dB	$> 15$
Group delay distortion	$f_0 \pm 15$ kHz	$\mu$ s	$< 15$

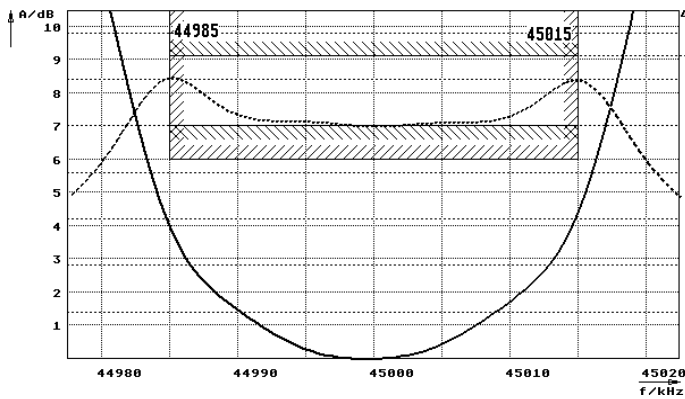
### Terminating impedance Z

R1    C1	Ohm/pF	650    2	
R2    C2	Ohm/pF	650    2	
Coupling capacitance	Ck	pF	10.0

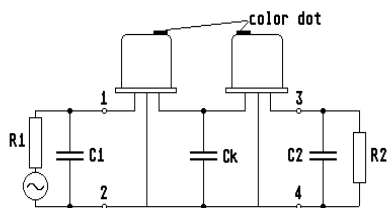
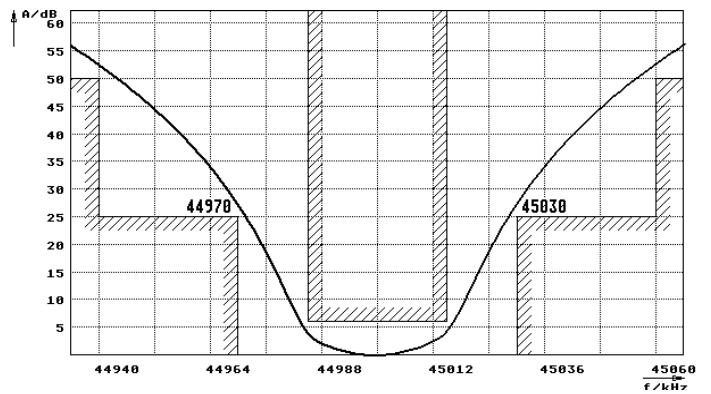
Operating temp. range	$^{\circ}$ C	-20... +70
-----------------------	--------------	------------

### Characteristics MQF45.0-3000/09

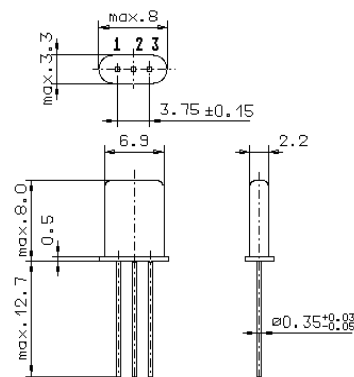
#### Pass band



#### Stop band



Pin connections: 1 Input  
2 Input-E  
3 Output  
4 Output-E



GH9