

# Monolithic crystal filter

## MQF 6.0-0300/01



### Application

- 2 pol filter
- i.f.- filter
- use in mobile and stationary transceivers

### Limiting values

		Unit	Value
Center frequency	$f_0$	MHz	6.0
Insertion loss		dB	$\leq 3.0$
Pass band at 3.00 dB		kHz	$\pm 1.5$
Ripple in pass band	$f_0 \pm 1.2$ kHz	dB	$\leq 2.0$
Stop band attenuation	$f_0 \pm 12.5$ kHz	dB	$\geq 18$
Alternate attenuation	$f_0 \pm 1.5...5$ MHz	dB	$> 65$

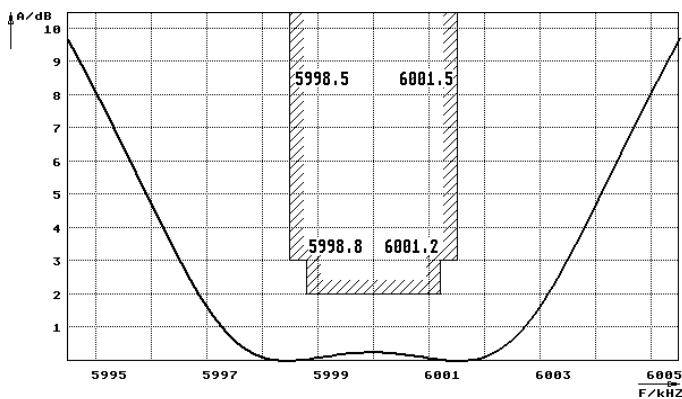
### Terminating impedance Z

R1    C1	Ohm/pF	5500    -2.0
R2    C2	Ohm/pF	5500    -2.0

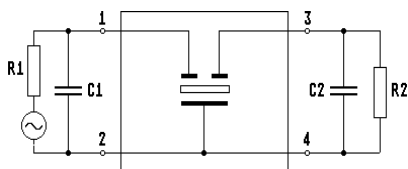
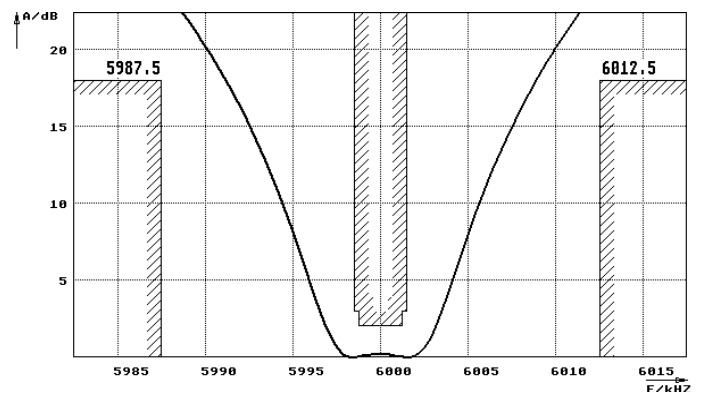
Operating temp. range	° C	-20... +70
-----------------------	-----	------------

### Characteristics MQF 6.0-0300/01

#### Pass band



#### Stop band



Pin connections: 1 Input  
2 Input-E  
3 Output  
4 Output-E

