

Monolithic crystal filter

MQF70.0-0660/03



Application

- 6 pol filter
- i.f.- filter
- use in mobile and stationary transceivers

Limiting values

		Unit	Value
Center frequency	f_0	MHz	70.0
Insertion loss		dB	≤ 5.0
Pass band at 2.0 dB		kHz	± 3.30
Ripple in pass band	$f_0 \pm 3.30$ kHz	dB	≤ 2.0
Stop band attenuation	$f_0 \pm 17.3$ kHz	dB	≥ 65
Alternate attenuation	$f_0 \pm 1$ MHz	dB	> 65 except spurious
Group delay distortion	$f_0 \pm 3.30$ kHz	μs	< 150
IMD at 0 dBm	$f_0 \pm 50$; $f_0 \pm 100$ kHz	dB	> 64
IMD at 0 dBm	$f_0 \pm 2$ kHz	dB	> 20

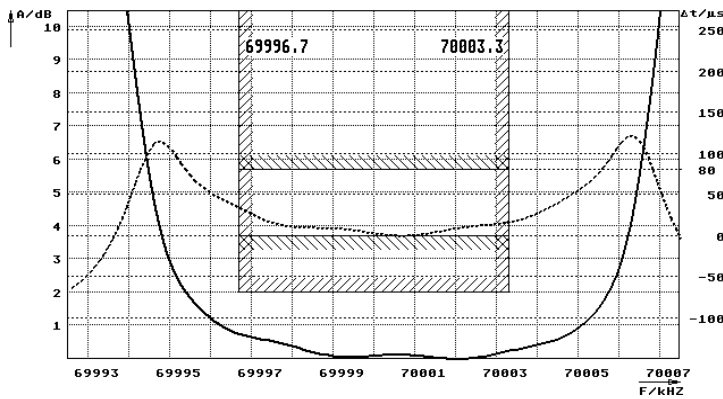
Terminating impedance Z

R1 C1	Ohm/pF	50 0
R2 C2	Ohm/pF	50 0

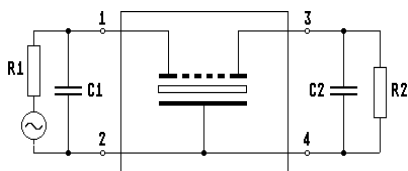
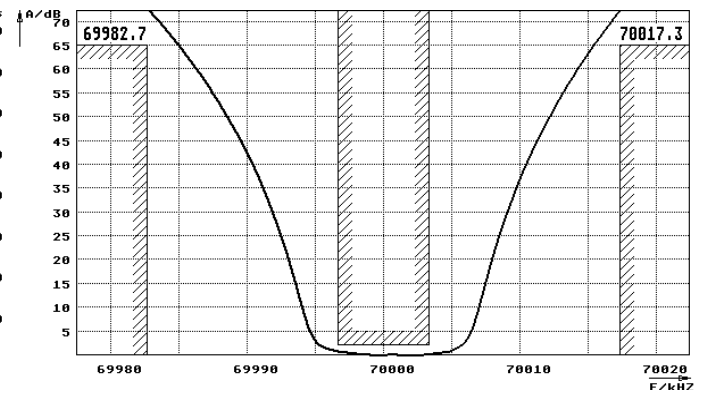
Operating temp. range $^{\circ}C$ -30... +75

Characteristics MQF70.0-0660/03

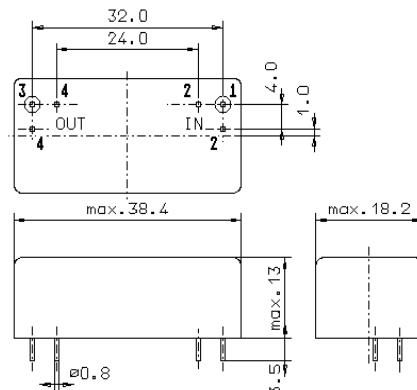
Pass band



Stop band



Pin connections: 1 Input
2 Input-E
3 Output
4 Output-E



GM17