

Crystal band stop filter

QBS78.6-2000/01



Application

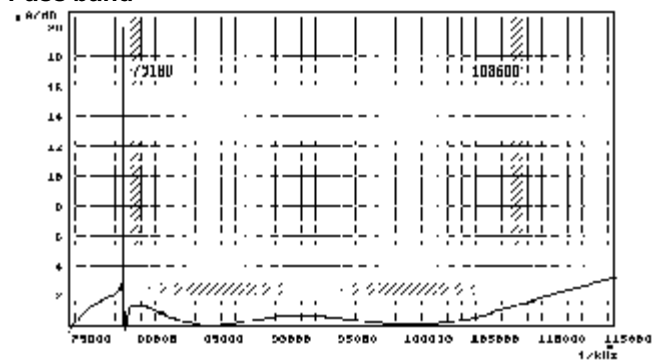
- 2 pol filter
- i.f.- filter
- use in mobile and stationary transceivers

Limiting values		Unit	Value
Nominal frequency	f_0	MHz	78.6
Insertion loss	smallest attenuation in pass band	dB	< 3.0
Stop band attenuation	$f_0 \pm 7.5$ kHz	dB	> 20
Pass band at 2.0 dB		MHz	79.1.....108.6
Ripple in pass band		dB	< 2.0
Spurious responses	in pass band	dB	< 2

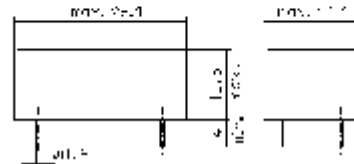
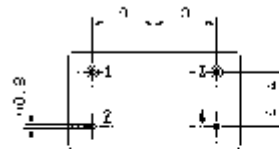
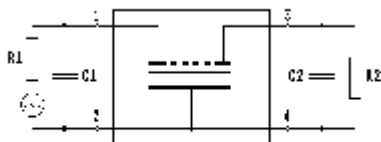
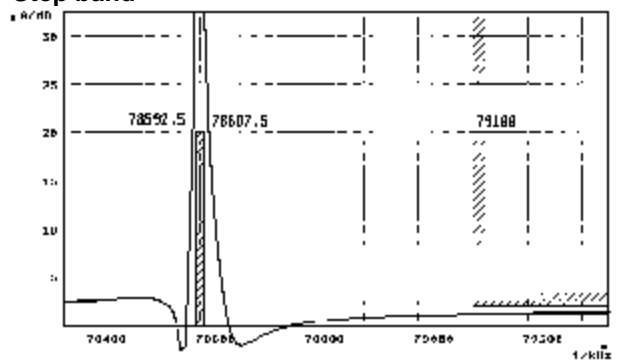
Terminating impedance Z			
R1 C1		Ohm/pF	50 0
R2 C2		Ohm/pF	50 0
Operating temp. range		°C	+0... +65
Storage temp. range		°C	-45... +85
Environment conditions			according to CF001

Characteristics QBS78.6-2000/01

Pass band



Stop band



- Pin connections:
- 1 Input
 - 2 Ground-Input
 - 3 Output
 - 4 Ground-Output