

# Crystal filter

## QF10.7-10000/04



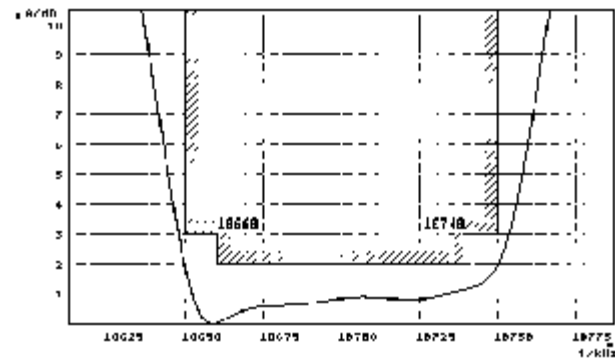
### Application

- 4 pol filter
- i.f.- filter
- use in mobile and stationary transceivers

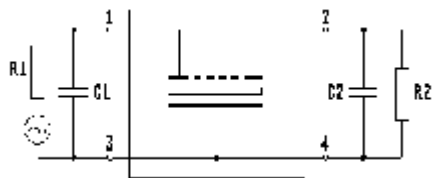
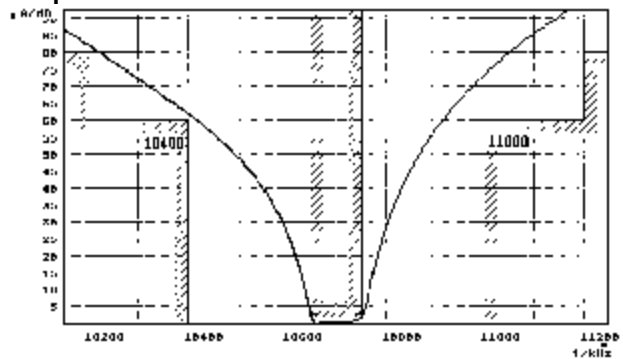
Limiting values		Unit	Value
Center frequency	$f_0$	MHz	$10.7 \pm 1$ kHz
Insertion loss		dB	$\leq 4.5$
Pass band at 3.0 dB		kHz	$\pm 50.00$
Ripple in pass band	$f_0 \pm 40.00$ kHz ( spurious responses up to 3 dB accepted )	dB	$\leq 2.0$
Stop band attenuation	$f_0 \pm 300$ kHz	dB	$\geq 60$
	$f_0 \pm 500$ kHz	dB	$> 80$
Alternate attenuation		dB	$> 90$
Spurious response		dB	$> 50$
Terminating impedance Z			
R1    C1		Ohm/pF	50    0
R2    C2		Ohm/pF	50    0
Operating temp. range		°C	-20... +70

### Characteristics QF10.7-10000/04

#### Pass band



#### Stop band



- Pin connections:
- 1 Input
  - 2 Output
  - 3 Ground-Input
  - 4 Ground-Output

