

Crystal filter

QF 1.4-L0200/05



Application

- 6 pol filter
- i.f.- filter
- use in mobile and stationary transceivers

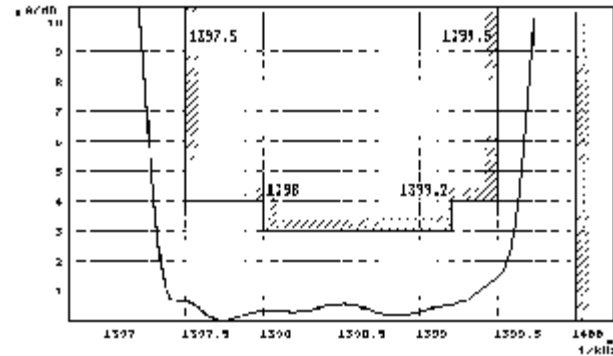
Limiting values		Unit	Value
Center frequency	f_0	MHz	1.4
Insertion loss		dB	≤ 5.0
Pass band at 4.0 dB		kHz	-2.5...-0.5
Ripple in pass band	$f_0 - 0.8 \dots - 2$ kHz	dB	≤ 3.0
Stop band attenuation	f_0	dB	≥ 10
	$f_0 - 5$ kHz; $f_0 + 0.7$ kHz	dB	> 45
Alternate attenuation		dB	> 45 except spurious

Terminating impedance Z			
R1 C1		Ohm/pF	1000 75
R2 C2		Ohm/pF	1000 75

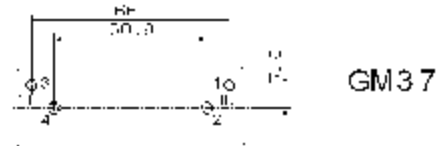
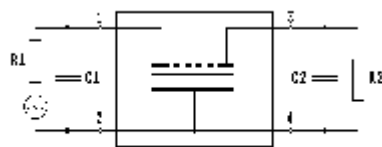
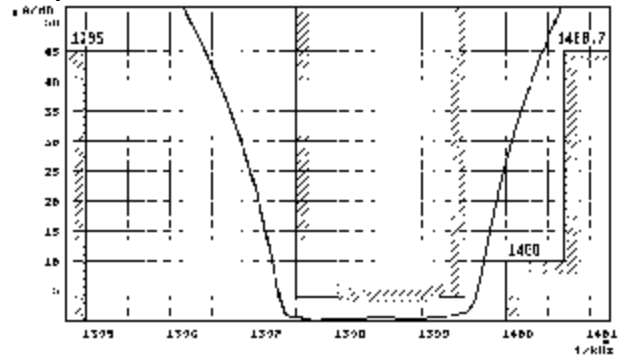
Operating temp. range		°C	-10... +65
-----------------------	--	----	------------

Characteristics QF 1.4-L0200/05

Pass band



Stop band



- Pin connections:
- 1 Input
 - 2 Ground-Input
 - 3 Output
 - 4 Ground-Output