



SOLID STATE DEVICES, INC.

14830 Valley View Blvd * La Mirada, Ca 90638

Phone: (562) 404-7855 * Fax: (562) 404-1773

ssdi@ssdi-power.com * www.ssdi-power.com

SDA165AHF thru SDA165HHF

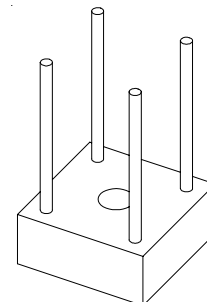
**6 - 10 AMPS
50 - 800 VOLTS
HYPER FAST
SINGLE PHASE BRIDGE**

Designer's Data Sheet

FEATURES:

- PIV 50 to 800 Volts
- Average Output 6 - 10A.
- Reverse Recovery 35 nsec Max
- Small Size
- Hermetically Sealed Rectifiers
- Easy PC Mounting
- Maximum Thermal Resistance 5.0°C/W
- -55 to +150°C Operating and Storage Temperature
- TX and TXV Level Screening Available

SDA165



ELECTRICAL CHARACTERISTICS

Part Number	Peak Inverse Voltage (per Leg)	Average Rectified Current	Maximum Surge Current (1 Cycle)	Maximum Forward Voltage (per Leg)		Maximum Reverse Current (@ PIV)	
				V _F	@I _F	I _R	
Symbol	PIV	I _O	I _{FSM}	Volts	Amps	µA	
Units	Volts	Amps	Amps	Volts	Amps	µA	
Conditions	25°C	55°C	25°C	T _A = 25°C		25°C	100°C
SDA165AHF	50	10	125	0.95	6	5.0	200
SDA165BHF	100	10	125	0.95	6	5.0	200
SDA165CHF	150	10	125	0.95	6	5.0	200
SDA165DHF	200	6	50	1.05	3	10.0	1000
SDA165EHF	300	6	50	1.05	3	10.0	1000
SDA165FHF	400	6	75	1.85	3	10.0	250
SDA165GHF	600	6	75	1.85	3	10.0	250
SDA165HHF	800	6	75	2.30	3	10.0	250

NOTES:

1. Maximum forward voltage measured with instantaneous forward pulse of 300µsec minimum.
2. Unless otherwise specified: T_A = 25°C.

NOTE: All specifications are subject to change without notification. SCD's for these devices should be reviewed by SSDI prior to release.

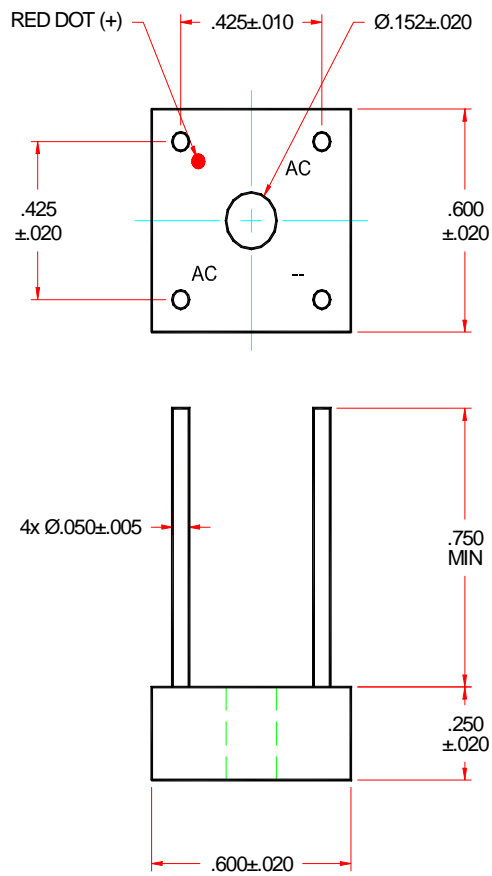
DATA SHEET #: RA0008D

**SDA165AHF
thru
SDA165HHF**



SOLID STATE DEVICES, INC.
14830 Valley View Blvd * La Mirada, Ca 90638
Phone: (562) 404-7855 * Fax: (562) 404-1773
ssdi@ssdi-power.com * www.ssdi-power.com

PACKAGE OUTLINE: SDA165



NOTES:

Consult manufacturing for operating curves.