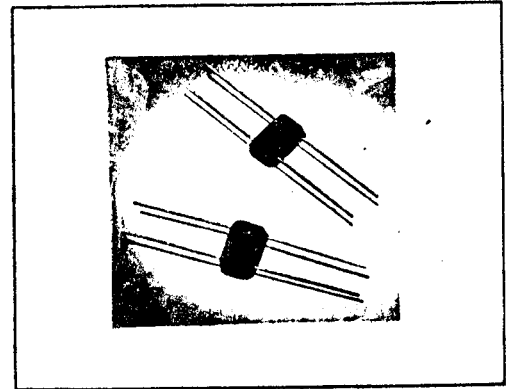


SDA 276 M X00176

1.5 amp rectifier assembly

MEDIUM RECOVERY

- * Average Output Current 1.5 Amp
- * PIV 50 to 1000 Volts
- * Medium Recovery, 1 usec. max.
- * Operating and Storage Temperature -55°C to +150°C
- * Subminiature Design for Packaging Versatility



SSDI introduces a new and complete series of Medium Recovery, Single Phase Bridge Rectifier Assemblies. These units are designed in special packages to provide maximum thermal conductivity and simple installation.

Consult your factory Representative for engineering assistance.

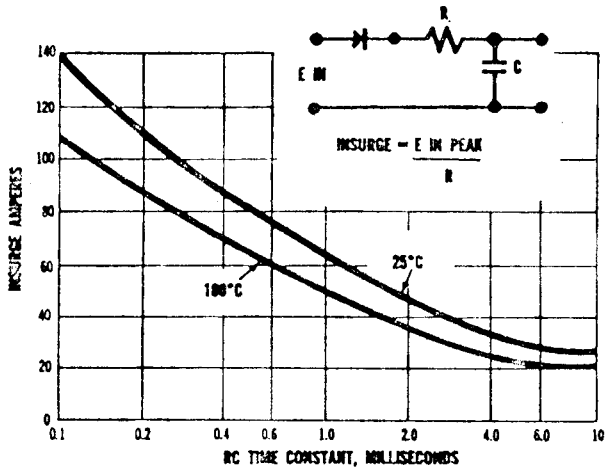
Type	PIV per leg	Sine Wave RMS input Voltage Max.	Average DC Output Amps TC - (case temp.)		Reverse * Recovery Time T _{rr} Max	Peak 1 Cycle Forward Surge	VF Max per leg @ ADC	Reverse Current (I _R Max. per leg. @ PIV)	
			55°C	100°C				25°C	100°C
	VOLTS	VOLTS	AMPS	AMPS	usec	AMPS	VOLTS	UA	UA
SDA276AM	50	35	1.5	1.0	1	10	1.2	2	40
SDA276BM	100	70	1.5	1.0	1	10	1.2	2	40
SDA276CM	200	140	1.5	1.0	1	10	1.2	2	40
SDA276DM	400	280	1.5	1.0	1	10	1.2	2	40
SDA276EM	600	420	1.5	1.0	1	10	1.2	2	40
SDA276FM	800	560	1.5	1.0	1	10	1.2	2	40
SDA276GM	1000	700	1.5	1.0	1	10	1.2	2	40



SSDI reserves the right to change specifications without notice.

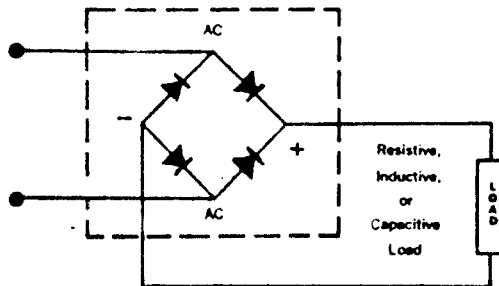
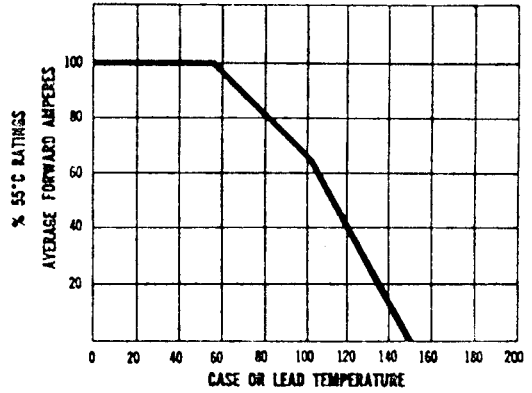
SOLID STATE DEVICES, INC.

MAXIMUM RATINGS FOR CAPACITY LOADS

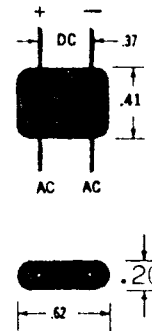
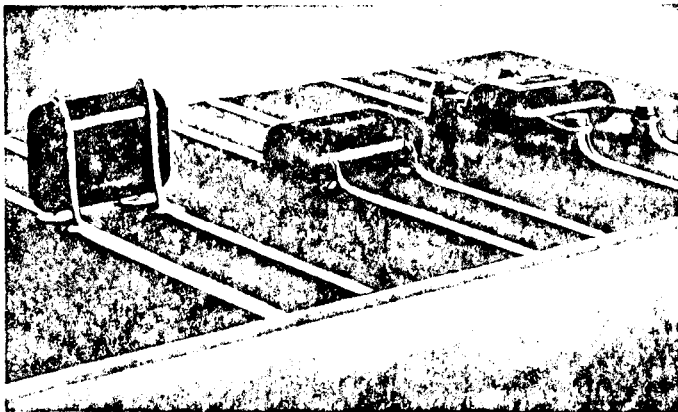


FOR FAST RECOVERY BRIDGES + 2

ALL BRIDGES
TEMPERATURE DERATING CURVE



Typical Bridge Circuit



Lead Spacing Measured
Center to Center

Tolerance $\pm .030$