

Coaxial Low Pass Filter

DC to 1350 MHz (40 dB Isolation up to 20 GHz)

NEW!
VLFX-1350

Maximum Ratings

Operating Temperature -55°C to 100°C

Storage Temperature -55°C to 100°C

RF Power Input* 10W max. at 25°C

*Passband rating, derate linearly to 3.5W at 100°C ambient.

Features

- very good isolation, 40 dB up to 20 GHz
- 21 sections
- temperature stable LTCC internal structure
- patent pending
- re-entry frequency > 20 GHz
- rugged stainless steel unibody

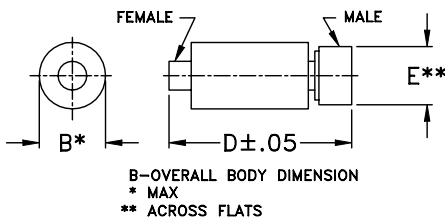


CASE STYLE: FF1118
PRICE: \$ 39.95 ea. QTY (1-9)

Applications

- harmonic rejection
- transmitters/receivers
- lab use
- test instrumentation

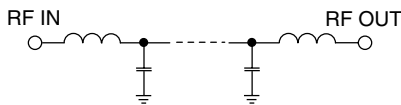
Outline Drawing



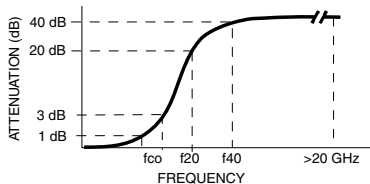
Outline Dimensions (inch/mm)

B	D	E	wt.
.39	2.67	.312	grams
9.91	67.82	7.92	17.0

Functional Schematic



Typical Frequency Response



Low Pass Filter Electrical Specifications @ 25°C

MODEL NO.	PASSBAND (MHz) (Loss < 1.2dB) Max.	fco, MHz Nom (Loss 3 dB) Typ	STOPBAND (MHz) (Loss, dB)		VSWR (:1)		NO. OF SECTIONS
			f20 Min.	f40 Typ.	Stopband Typ.	Passband Typ.	
VLFX-1350	DC-1350	2050	2,425	2650-20000	10	1.3	21

Typical Performance Data @ 25°C

Frequency (MHz)	Insertion Loss (dB)	VSWR (:1)
50	0.30	1.11
250	0.20	1.09
500	0.42	1.16
1000	0.76	1.14
1300	1.01	1.29
1500	1.18	1.27
1800	1.66	1.29
2100	3.92	1.76
2200	9.27	3.96
2300	20.68	7.90
2600	40.80	17.87
3000	76.88	27.55
4000	81.43	29.27
5000	78.41	46.43
7500	74.23	25.88
10000	79.16	41.61
12500	63.92	15.38
15000	55.14	9.11
17500	70.26	9.10
20000	63.12	11.15

