

Coaxial Low Pass Filter

DC to 300 MHz (40 dB Isolation up to 20 GHz)

NEW!
VLFX-300

Maximum Ratings

Operating Temperature -55°C to 100°C

Storage Temperature -55°C to 100°C

RF Power Input* 10W max. at 25°C

*Passband rating, derate linearly to 3.5W at 100°C ambient.

Features

- very good isolation, 40 dB up to 20 GHz
- 21 sections
- temperature stable LTCC internal structure
- patent pending
- re-entry frequency > 20 GHz
- rugged stainless steel unibody

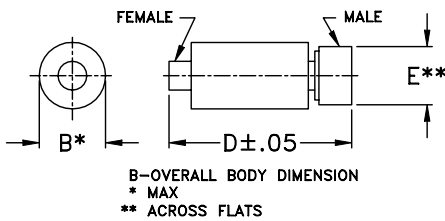


CASE STYLE: FF1118
PRICE: \$ 39.95 ea. QTY (1-9)

Applications

- harmonic rejection
- transmitters/receivers
- lab use
- test instrumentation

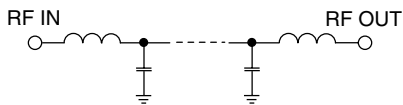
Outline Drawing



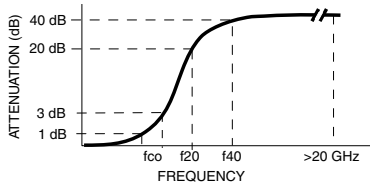
Outline Dimensions (inch/mm)

B	D	E	wt.
.39	2.67	.312	grams
9.91	67.82	7.92	17.0

Functional Schematic



Typical Frequency Response



Low Pass Filter Electrical Specifications @ 25°C

MODEL NO.	PASSBAND (MHz) (Loss < 1.2dB) Max.	fco, MHz Nom (Loss 3 dB) Typ	STOPBAND (MHz) (Loss, dB)		VSWR (:1)		NO. OF SECTIONS
			f20 Min.	f40 Typ.	Stopband Typ.	Passband Typ.	
VLFX-300	DC-300	450	580	850-20000	10	1.15	21

Typical Performance Data @ 25°C

Frequency (MHz)	Insertion Loss (dB)	VSWR (:1)
50	0.38	1.16
100	0.39	1.09
200	0.64	1.11
300	0.95	1.11
350	1.21	1.28
400	1.79	1.58
450	2.85	1.88
500	6.46	1.56
550	21.32	4.16
650	41.12	8.93
800	38.18	13.79
900	44.02	18.40
1000	60.37	23.84
2500	79.10	80.35
5000	61.32	67.53
7500	60.77	49.08
10000	79.72	24.86
12500	62.16	7.48
15000	51.60	12.04
20000	71.48	12.03

