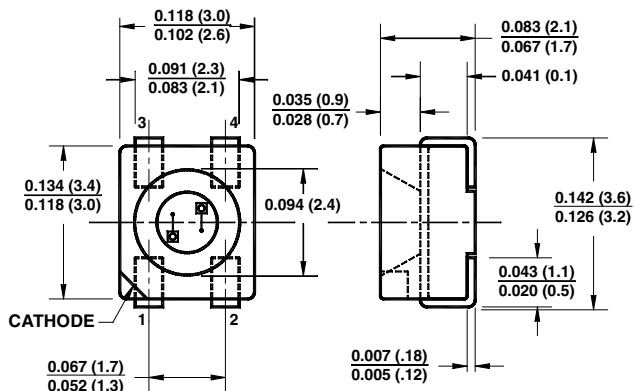




# PLCC-4 (BI-COLOR) PACKAGE SURFACE MOUNT LED LAMP

HER / PURE GREEN      QTLP670C25.7744D

## PACKAGE DIMENSIONS

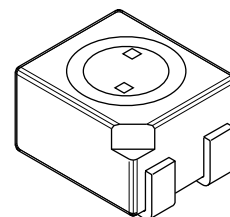


**NOTE:**

1. All dimensions are in inches (mm).
2. Pin-out connections are on page 3.

## FEATURES

- Non-diffused package excellent for back-lighting and coupling to light pipe
- Low package profile
- Wide viewing angle of 120°
- Moisture proof packaging



## DESCRIPTION

This bi-color surface mount lamp is designed with a flat top and sides for automatic placement equipment. It is compatible with convective IR and vapor phase reflow soldering and conductive epoxy attachment process. The package size and configuration conform to EIA-535 BAAC standard specification for case size 3528 tantalum capacitor.

## ABSOLUTE MAXIMUM RATINGS (T<sub>A</sub> = 25°C unless otherwise specified)

Parameter	Symbol	Rating	Unit
Operating Temperature	T <sub>OPR</sub>	-40 to +100	°C
Storage Temperature	T <sub>STG</sub>	-40 to +100	°C
Lead Soldering Time	T <sub>SOL</sub>	260 for 5 sec	°C
Continuous Forward Current	I <sub>F</sub>	30	mA
Peak Forward Current (f = 1.0 KHz, Duty Factor = 1/10)	I <sub>F</sub>	160	mA
Reverse Voltage (I <sub>R</sub> = 10 μA)	V <sub>R</sub>	5	V
Power Dissipation	P <sub>D</sub>	100	mW

## ELECTRICAL / OPTICAL CHARACTERISTICS (T<sub>A</sub> = 25°C)

Part Number	Condition
QTLP670C25.7744D	I <sub>F</sub> = 20 mA
Luminous Intensity (mcd)	I <sub>F</sub> = 20 mA
Red - Cat 17 & 18	4 - 8, 6.5 - 13
Green - Cat 15 & 16	1.5 - 3.0, 2.5 - 5.0
Forward Voltage (V)	I <sub>F</sub> = 20 mA
Maximum	2.8 / 2.8
Typical	2.0 / 2.0
Wavelength (nm)	I <sub>F</sub> = 20 mA
Peak	635 / 555
Dominant	628 / 560
Spectral Line Half Width (nm)	I <sub>F</sub> = 20 mA
	45 / 22
Viewing Angle (°)	I <sub>F</sub> = 20 mA
	120



# PLCC-4 (BI-COLOR) PACKAGE SURFACE MOUNT LED LAMP

HER / PURE GREEN

QTLP670C25.7744D

## TYPICAL PERFORMANCE CURVES

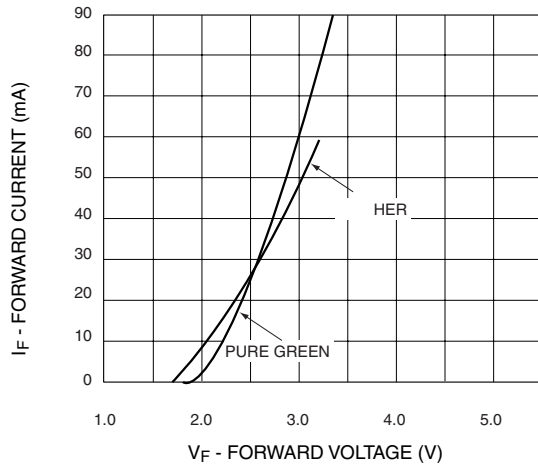


Fig. 1 Forward Current vs. Forward Voltage

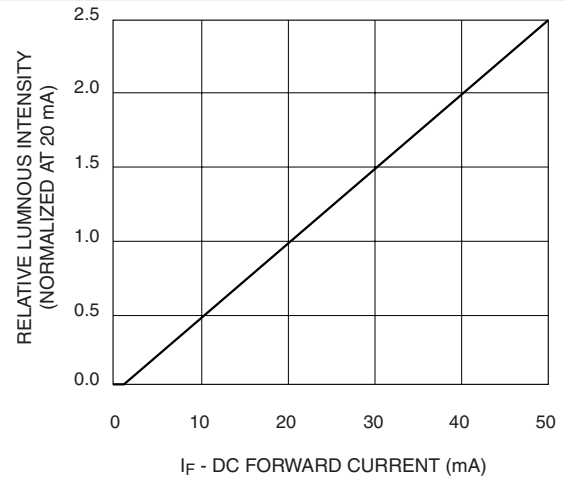


Fig. 2 Relative Luminous Intensity vs. DC Forward Current

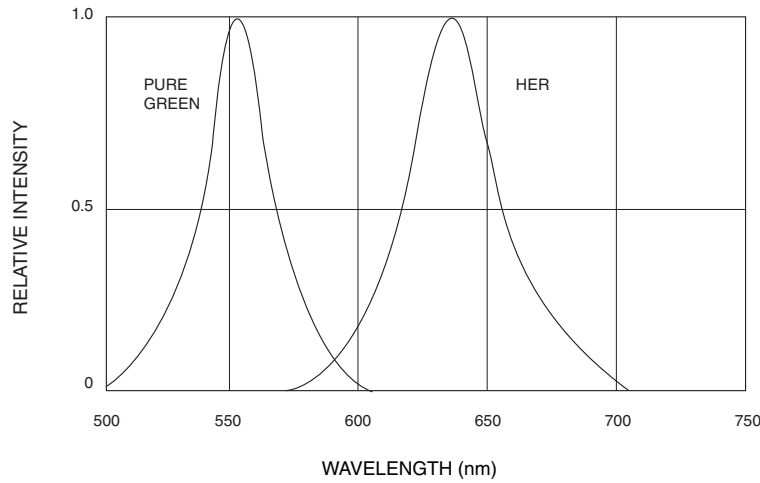


Fig. 3 Relative Intensity vs. Peak Wavelength

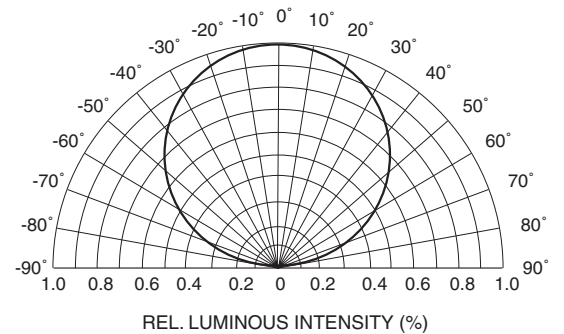


Fig. 4 Radiation Diagram

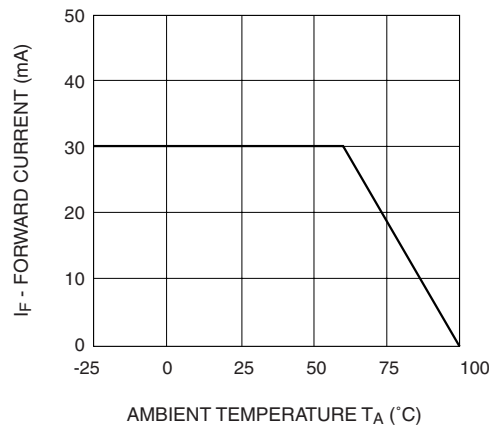


Fig. 5 Forward Current vs. Ambient Temperature

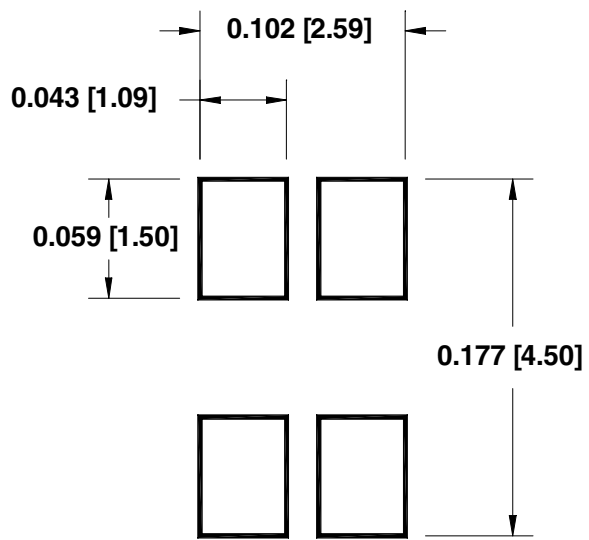


# PLCC-4 (BI-COLOR) PACKAGE SURFACE MOUNT LED LAMP

HER / PURE GREEN      QTLP670C25.7744D

PIN-OUT				
Part Number	Pin #1	Pin #2	Pin #3	Pin #4
QTLP670C-25	HER (-)	Pure Green (+)	HER (+)	Pure Green (-)

## RECOMMENDED PRINTED CIRCUIT BOARD PATTERN



## RECOMMENDED IR REFLOW SOLDERING PROFILE

