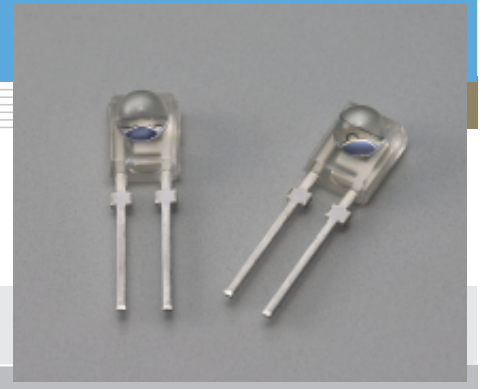


Si PIN photodiode

S7797, S5052, S8255, S5573

φ3 mm lens plastic package



These Si PIN photodiodes are molded into to a clear plastic package with a φ3 mm lens. To meet your application, various types are available with different time response characteristics.

Features

- Clear plastic package with φ3 mm lens
- High-speed response
 - S7797: 500 MHz Typ. ($V_R=2.5$ V)
 - S5052: 500 MHz Typ. ($V_R=5$ V)
 - S8255: 200 MHz Typ. ($V_R=5$ V)
 - S5573: 80 MHz Typ. ($V_R=5$ V)

Applications

- Laser diode monitor in optical disk drive (high-speed APC)
- Spatial light transmission

General ratings / Absolute maximum ratings

Type No.	Package (mm)	Active area size (mm)	Effective active area (mm ²)	Absolute maximum ratings			
				Reverse voltage V_R Max. (V)	Power dissipation P (mW)	Operating temperature T_{opr} (°C)	Storage temperature T_{stg} (°C)
S7797	Plastic package with lens	φ3.0	7.0	20	50	-25 to +85	-40 to +100
S5052							
S8255							
S5573							

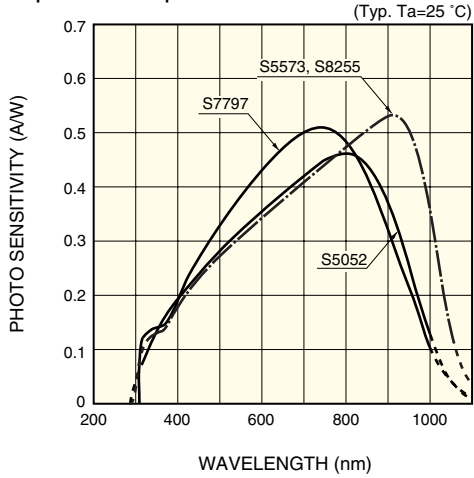
Electrical and optical characteristics (Typ. $T_a=25$ °C, unless otherwise noted)

Type No.	Spectral response range λ (nm)	Peak sensitivity wavelength λ_p (nm)	Photo sensitivity S (A/W)				Short circuit current I_{sc} 100 lx 2856 K (μ A)	Dark current I_D (nA)		Temp. coefficient of I_D T_{CID} (times/°C)	Cut-off frequency f_c $R_L=50 \Omega$ -3dB (MHz)	Terminal capacitance C_t $f=1$ MHz (pF)	NEP (W/Hz ^{1/2})
			λ_p	660 nm	780 nm	830 nm		Typ.	Max.				
S7797	320 to 1000	760	0.52	0.48	0.51	0.48	2.8	0.01 *1	0.3 *1	1.15	500 *1	6 *1	3.4×10^{-15} *1
S5052		800	0.46	0.4	0.45	0.45	2.8	0.02 *2	0.3 *2		500 *2	4 *2	5.5×10^{-15} *2
S8255	320 to 1060	900	0.53	0.4	0.48	0.5	4.0	0.01 *2	1 *2		200 *2	3 *2	3.4×10^{-15} *2
S5573							4.5	0.025 *2	1 *2		80 *2		

*1: $V_R=2.5$ V

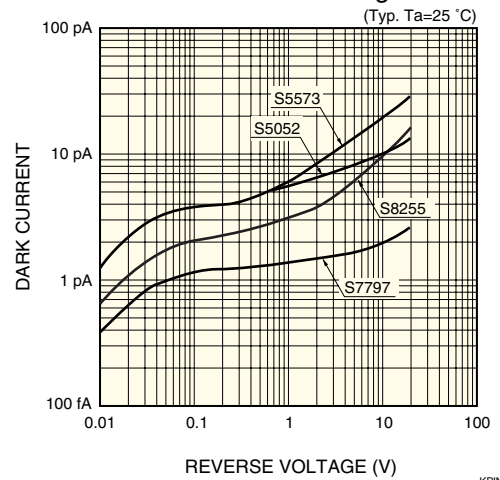
*2: $V_R=5$ V

■ Spectral response



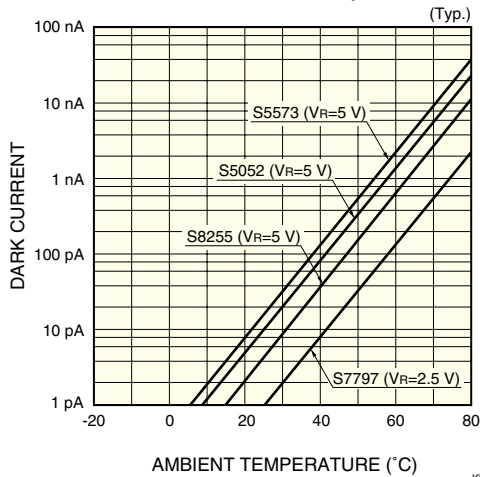
KPINB0176EA

■ Dark current vs. reverse voltage



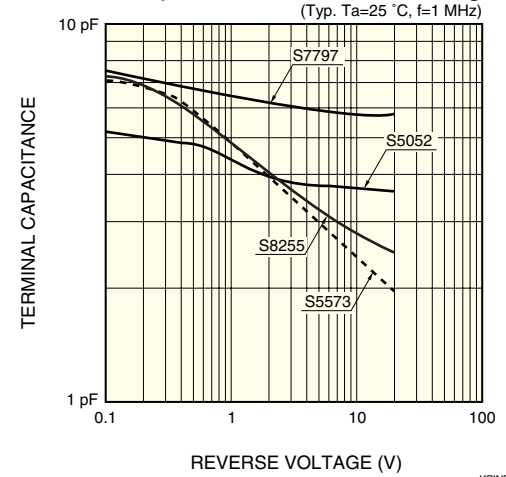
KPINB0177EA

■ Dark current vs. ambient temperature



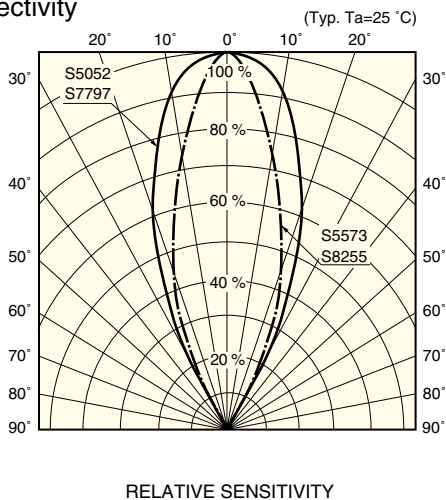
KPINB0178EA

■ Terminal capacitance vs. reverse voltage



KPINB0179EA

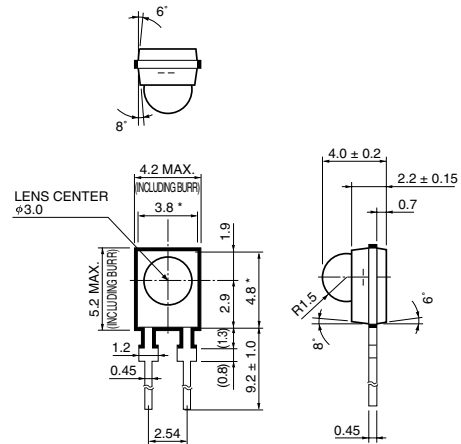
■ Directivity



KPINB0180EA

■ Dimensional outline

(unit: mm, tolerance unless otherwise noted: ± 0.1)



Chip position accuracy with respect to the package dimension marked *
 $X, Y \pm 0.2$
 $\theta \pm 2^\circ$

KPINA0032EA

HAMAMATSU

Information furnished by HAMAMATSU is believed to be reliable. However, no responsibility is assumed for possible inaccuracies or omissions. Specifications are subject to change without notice. No patent rights are granted to any of the circuits described herein. ©2001 Hamamatsu Photonics K.K.

HAMAMATSU PHOTONICS K.K., Solid State Division

1126-1 Ichino-cho, Higashi-ku, Hamamatsu City, 435-8558 Japan, Telephone: (81) 53-434-3311, Fax: (81) 53-434-5184, <http://www.hamamatsu.com>

U.S.A.: Hamamatsu Corporation: 360 Foothill Road, P.O.Box 6910, Bridgewater, N.J. 08807-0910, U.S.A., Telephone: (1) 908-231-0960, Fax: (1) 908-231-1218

Germany: Hamamatsu Photonics Deutschland GmbH: Arzbergerstr. 10, D-82211 Herrsching am Ammersee, Germany, Telephone: (49) 08152-3750, Fax: (49) 08152-2658

France: Hamamatsu Photonics France S.A.R.L.: 19, Rue du Saule Trapu, Parc du Moulin de Massy, 91882 Massy Cedex, France, Telephone: 33-(1) 69 53 71 00, Fax: 33-(1) 69 53 71 10

United Kingdom: Hamamatsu Photonics UK Limited: 2 Howard Court, 10 Tewin Road, Welwyn Garden City, Hertfordshire AL7 1BW, United Kingdom, Telephone: (44) 1707-294888, Fax: (44) 1707-325777

North Europe: Hamamatsu Photonics Norden AB: Smidesvägen 12, SE-171 41 Solna, Sweden, Telephone: (46) 8-509-031-00, Fax: (46) 8-509-031-01

Italy: Hamamatsu Photonics Italia S.R.L.: Strada della Moia, 1/E, 20020 Arese, (Milano), Italy, Telephone: (39) 02-935-81-733, Fax: (39) 02-935-81-741