



QEFS45M0B30

SMD Monolithic Crystal Filter – 45.000 MHz
Specification (Rev-B)

▣ Electrical Characteristics	P01
▣ Environmental Specifications	P01
▣ Mechanical Characteristics	P01
▣ Test Circuit	P02
▣ Marking	P02
▣ Reflow Soldering Profile	P02
▣ Tape & Reel	P03

QEFS45M0B30

SMD Monolithic Crystal Filter – 45.000 MHz
Specification (rev-B)

November 5th , 2005

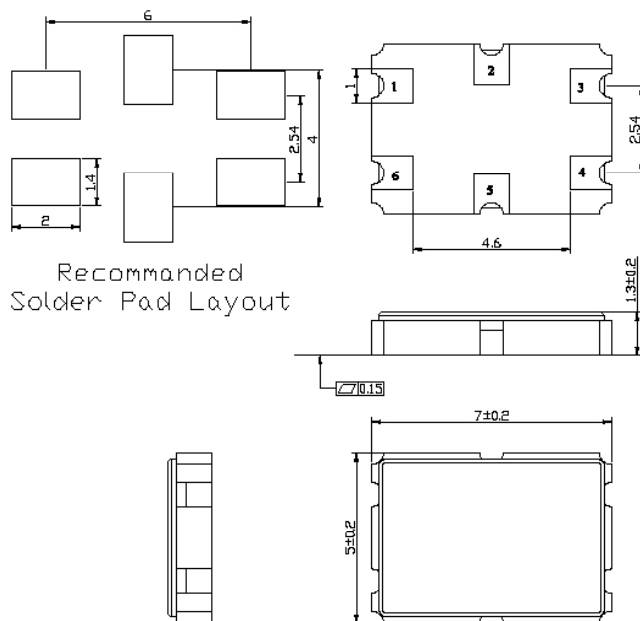
Electrical Characteristics

Electrical Parameters	Unit	Minimum	Typical	Maximum	Test conditions
Nominal Frequency	MHz		45.000		
Insertion Loss	dB			3	
Pass Band at 3.0dB	KHz	±14			
Ripple in pass band	dB			1	
Stop Band attenuation at 20 dB	KHz			±30	
Spurious Response	dB	35			
Terminating Impedance	KΩ//pF		800±5% // 1.2±0.2	-	
Number of Poles			4 Single SMD Package		

Environmental Specifications

Electrical Parameters	Unit	Minimum	Typical	Maximum
Operating Temperature	°C	-20		+60

Mechanical Characteristics



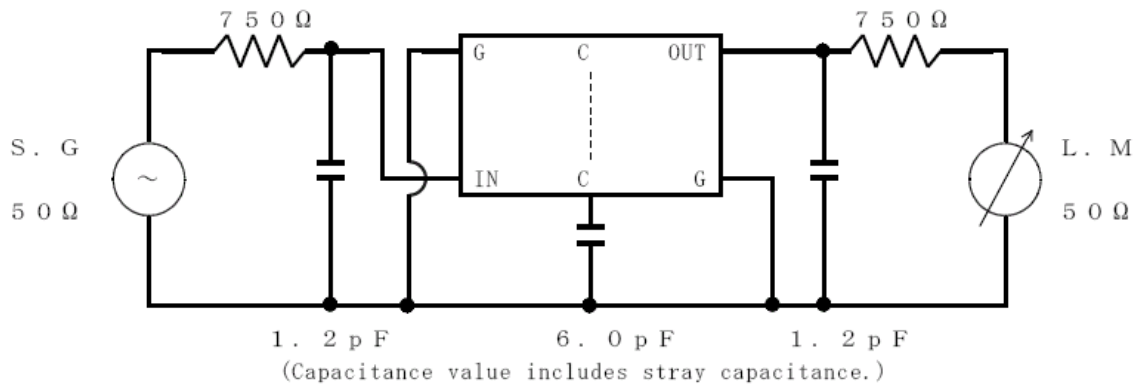
Pin Connections	
# 1	In
# 2	Coupling Capacitance
# 3	Gnd
# 4	Out
# 5	Coupling Capacitance
# 6	Gnd

QEFS45M0B30

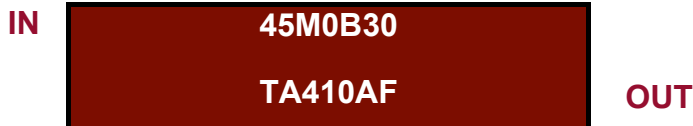
SMD Monolithic Crystal Filter – 45.000 MHz
Specification (rev-B)

November 5th , 2005

Test Circuit 4 Poles Mono

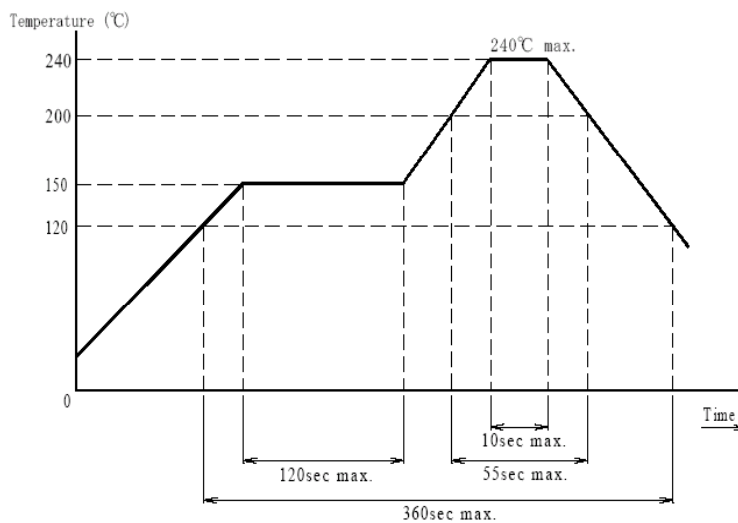


Marking



- 45M0B30: Temex P/N
- TA: Temex name
- 0410: Date code (YYWW)
- AF : Manufacturing Code

Reflow Soldering Profile



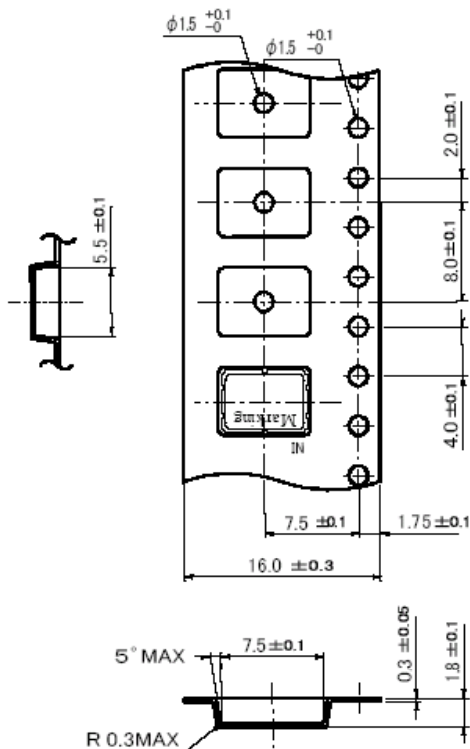
Reflow soldering:
two times max

QEFS45M0B30

SMD Monolithic Crystal Filter – 45.000 MHz
Specification (rev-B)

November 5th , 2005

▣ Tape & Reel



← Drawing Out Direction.

