

TMX W315

SAW Bandpass Filter – DCS1800 Rx – RF
Specification (Rev 2)

▣ Features.....	P01
▣ Package Drawing & Pin out.....	P01
▣ Technical Characteristics	P02
▣ Matching Network.....	P02
▣ Nominal Response.....	P03
▣ Maximum Ratings.....	P04
▣ Marking & Packaging	P04

TMX W315

SAW Bandpass Filter – DCS1800 Rx – RF

Specification (Rev 2)

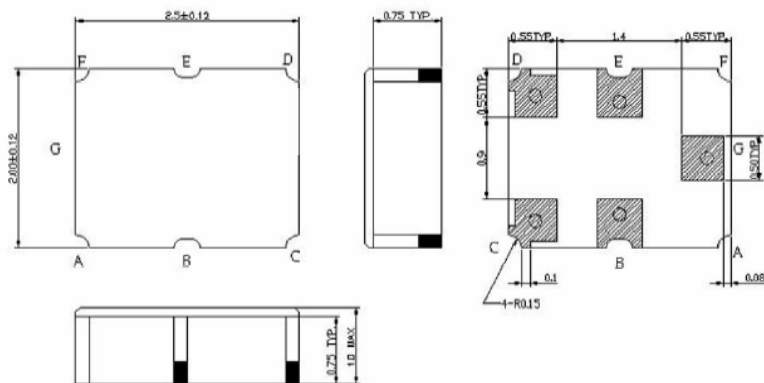
September 25th, 2005

Features

- ❑ Rx Filter for DCS1800
- ❑ 1842,5 MHz Center Frequency
- ❑ 75 MHz useable Passband
- ❑ 50 W Single Input / 200 W Balance Output
- ❑ Ceramic Package for Surface Mounted Technology

Package Drawing & Pin out

The product is in conformance with the European RoHs Regulation 2002/95.



Pin Configuration	
Input	G
Output	C, D
Case ground	B, E

TMX W315

SAW Bandpass Filter – DCS1800 Rx – RF

Specification (Rev 2)

September 25th, 2005

Technical Characteristics

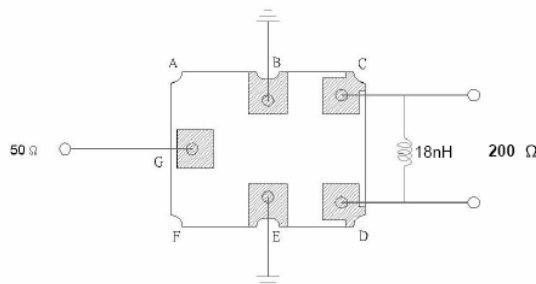
Reference Temperature : +25°C

Electrical Parameters	Unit	Minimum	Typical ⁽¹⁾	Maximum
Source Impedance (single ended)	Ω	-	50 ⁽²⁾	-
Load Impedance (balance drive)	Ω	-	200 ⁽²⁾	-
Center Frequency f_0	MHz	-	1842.5	-
Bandwidth at -3 dB	MHz	75	-	-
Absolute attenuation				
DC to 1200 MHz	dB	40	49	-
1200 MHz to 1705 MHz	dB	30	34	-
1705 MHz to 1785 MHz	dB	9	14	-
1920 MHz to 1980 MHz	dB	10	22	-
1980 MHz to 2200 MHz	dB	20	24	-
2200 MHz to 3000 MHz	dB	30	36	-
3000 MHz to 6000 MHz	dB	40	44	-
Insertion Loss within 1805 MHz ~ 1880 MHz	dB	-	2.9	4.0
Input VSWR within 1805 MHz ~ 1880 MHz		-	2.1	2.7
Output VSWR within 1805 MHz ~ 1880 MHz		-	2.0	2.7
Ripple within 1805 MHz ~ 1880 MHz	dB	-	1.0	2.1
Symmetry in band (referenced to the matched operating condition)				
$ S_{31} / S_{21} $ within 1805 MHz ~ 1880 MHz	dB	- 2.0	0	2
? (S_{31}) - (? (S_{21})+180°) within 1805 MHz ~ 1880MHz	°	- 12	0	12

Notes :

- (1) Typical values are nominal performances at room temperature.
- (2) External matching network is required.

Matching Network



TMX W315

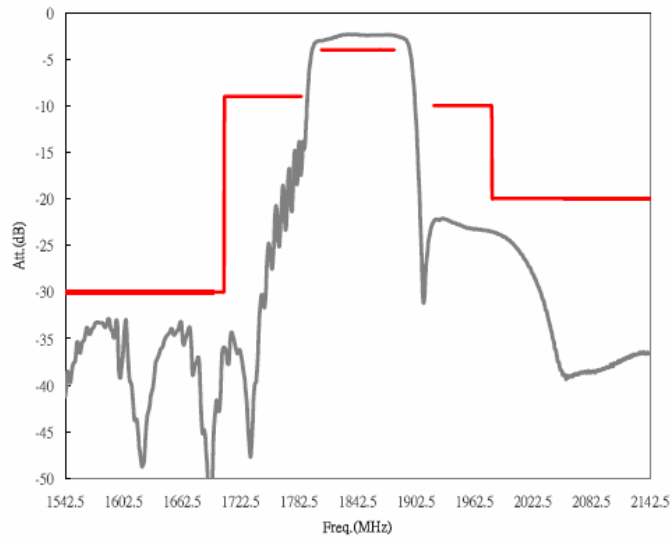
SAW Bandpass Filter – DCS1800 Rx – RF

Specification (Rev 2)

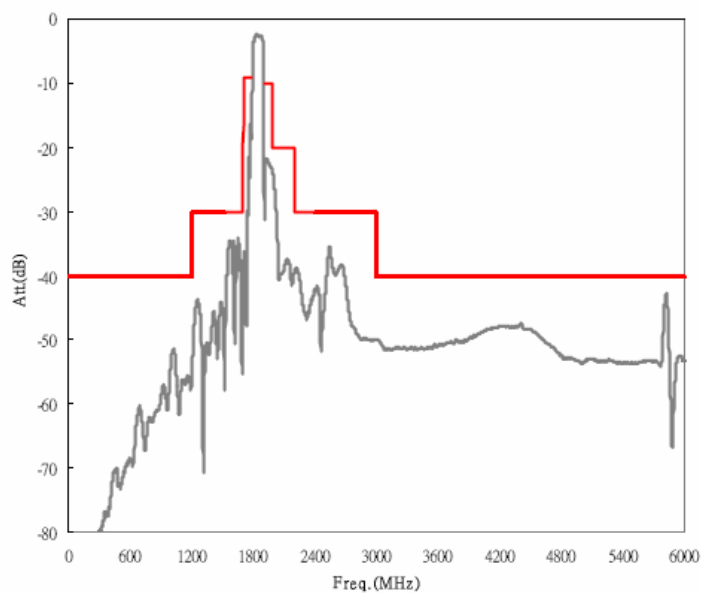
September 25th, 2005

Nominal Frequency Response (Measurements)

Frequency Response



Frequency Response



TMX W315

SAW Bandpass Filter – DCS1800 Rx – RF

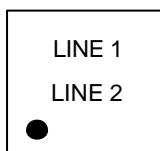
Specification (Rev 2)

September 25th, 2005

Maximum Ratings

Operating Temperature Range	°C	[-25°C ; +75°C]
Storage Temperature Range	°C	[-40°C ; +85°C]

Marking



Line 1: "P C" with P for the code product identification and C for the partner identifier

Line 2: "Y W" with Y for the last digit of the year and W for the week code (A to Z for the week 1 to 26 and a to z for the week 27 to 52).

Packaging

1. Temex label
2. ESD Prevention label
3. Pb free label (if applicable)

