

Tiny 500mA, 4MHz/2MHz Synchronous Step-Down DC-DC Converters

General Description

The MAX8640Y/MAX8640Z step-down converters are optimized for applications where small size, high efficiency, and low output ripple are priorities. They utilize a proprietary PWM control scheme that optimizes the switching frequency for high efficiency with small external components and maintains low output ripple voltage at all loads. The MAX8640Z switches at up to 4MHz to allow a tiny 1 μ H inductor and 2.2 μ F output capacitor. The MAX8640Y switches at up to 2MHz for higher efficiency while still allowing small 2.2 μ H and 4.7 μ F components. Output current is guaranteed up to 500mA, while typical quiescent current is 28 μ A. Factory-preset output voltages from 0.8V to 2.5V eliminate external feedback components.

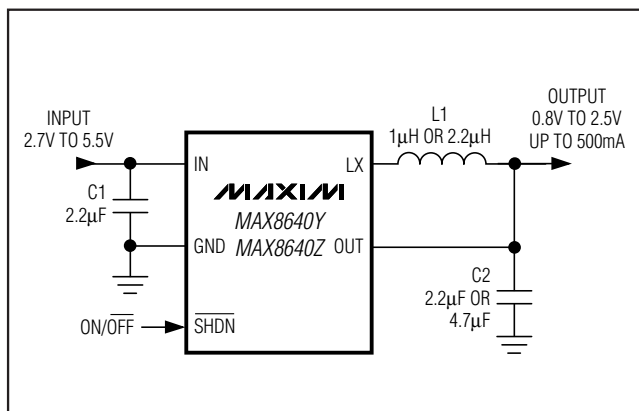
Internal synchronous rectification greatly improves efficiency and replaces the external Schottky diode required in conventional step-down converters. Internal fast soft-start eliminates inrush current so as to reduce input capacitor requirements.

The MAX8640Y/MAX8640Z are available in the tiny 6-pin, SC70 (2.0mm x 2.1mm) and μ DFN (1.5mm x 1.0mm) packages. Both packages are lead-free.

Applications

Microprocessor/DSP Core Power
I/O Power
Cell Phones, PDAs, DSCs, MP3s
Other Handhelds Where Space Is Limited

Typical Operating Circuit



Features

- ◆ Tiny SC70 and μ DFN Packages
- ◆ 500mA Guaranteed Output Current
- ◆ 4MHz or 2MHz PWM Switching Frequency
- ◆ Tiny External Components: 1 μ H/2.2 μ F or 2.2 μ H/4.7 μ F
- ◆ 28 μ A Quiescent Current
- ◆ Factory Preset Outputs from 0.8V to 2.5V
- ◆ \pm 1% Initial Accuracy
- ◆ Low Output Ripple at All Loads
- ◆ Ultrasonic Skip Mode Down to 1mA Loads
- ◆ Ultra-Fast Line- and Load-Transient Response
- ◆ Fast Soft-Start Eliminates Inrush Current

Ordering Information

PART*	PIN-PACKAGE	PKG CODE	TOP MARK
MAX8640YEXT08+T	6 SC70-6	X6S-1	ACQ
MAX8640YEXT11+T	6 SC70-6	X6S-1	ACR
MAX8640YEXT12+T	6 SC70-6	X6S-1	ACS
MAX8640YEXT13+T	6 SC70-6	X6S-1	ACG
MAX8640YEXT15+T	6 SC70-6	X6S-1	ADD
MAX8640YEXT16+T	6 SC70-6	X6S-1	ADB
MAX8640YEXT18+T	6 SC70-6	X6S-1	ACI
MAX8640YEXT19+T	6 SC70-6	X6S-1	ACH
MAX8640YEXT25+T	6 SC70-6	X6S-1	ACJ

*Contact factory for availability of each version.

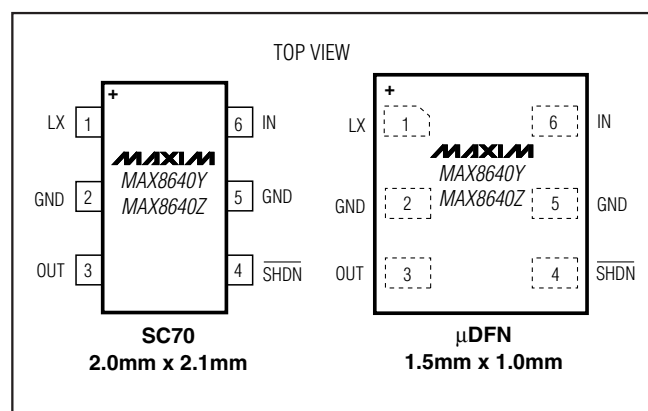
+Denotes a lead-free package.

T = Tape and reel.

Note: All devices are specified over the -40°C to +85°C operating temperature range.

Ordering Information continued and Selector Guide appears at end of data sheet.

Pin Configurations



Tiny 500mA, 4MHz/2MHz Synchronous Step-Down DC-DC Converters

ABSOLUTE MAXIMUM RATINGS

IN to GND-0.3V to +6V
 LX, OUT, $\overline{\text{SHDN}}$ to GND-0.3V to ($V_{\text{IN}} + 0.3\text{V}$)
 LX Current (Note 1)0.8A_{RMS}
 OUTPUT Short Circuit to GNDContinuous
 Continuous Power Dissipation ($T_A = +70^\circ\text{C}$)
 6-Pin SC70 (derate 3.1mW/ $^\circ\text{C}$ above $+70^\circ\text{C}$).....245mW

6-Pin μDFN (derate 2.1mW/ $^\circ\text{C}$ above $+70^\circ\text{C}$)167.7mW
 Operating Temperature Range-40 $^\circ\text{C}$ to +85 $^\circ\text{C}$
 Junction Temperature+150 $^\circ\text{C}$
 Storage Temperature Range-65 $^\circ\text{C}$ to +150 $^\circ\text{C}$
 Lead Temperature (soldering, 10s)+300 $^\circ\text{C}$

Note 1: LX has internal clamp diodes to IN and GND. Applications that forward bias these diodes should not exceed the IC's package power-dissipation limit.

Stresses beyond those listed under "Absolute Maximum Ratings" may cause permanent damage to the device. These are stress ratings only, and functional operation of the device at these or any other conditions beyond those indicated in the operational sections of the specifications is not implied. Exposure to absolute maximum rating conditions for extended periods may affect device reliability.

ELECTRICAL CHARACTERISTICS

($V_{\text{IN}} = 3.6\text{V}$, $\overline{\text{SHDN}} = \text{IN}$, $T_A = -40^\circ\text{C}$ to +85 $^\circ\text{C}$, typical values are at $T_A = +25^\circ\text{C}$, unless otherwise noted.) (Note 2)

PARAMETER	SYMBOL	CONDITIONS	MIN	TYP	MAX	UNITS
Supply Range	V_{IN}		2.7		5.5	V
UVLO Threshold	UVLO	V_{IN} rising, 100mV hysteresis	2.44	2.6	2.70	V
Supply Current	I_{CC}	No load, no switching		28	48	μA
		$\overline{\text{SHDN}} = \text{GND}$	$T_A = +25^\circ\text{C}$	0.01	0.1	
			$T_A = +85^\circ\text{C}$	0.1		
Output Voltage Range	V_{OUT}	Factory preset	0.8		2.5	V
Output Voltage Accuracy (Falling Edge)		$I_{\text{LOAD}} = 0\text{mA}$, $T_A = +25^\circ\text{C}$	-1	0	+1	%
		$I_{\text{LOAD}} = 0\text{mA}$, $T_A = -40^\circ\text{C}$ to +85 $^\circ\text{C}$	-2		+2	
Output Load Regulation (Voltage Positioning)		Equal to inductor DC resistance		R_L		V/A
$\overline{\text{SHDN}}$ Logic Input Level	V_{IH}	$V_{\text{IN}} = 2.7\text{V}$ to 5.5V	1.4			V
	V_{IL}	$V_{\text{IN}} = 2.7\text{V}$ to 5.5V			0.4	
$\overline{\text{SHDN}}$ Logic Input Bias Current	$I_{\text{IH,IL}}$	$V_{\text{IN}} = 5.5\text{V}$, $\overline{\text{SHDN}} = \text{GND}$ or IN	$T_A = +25^\circ\text{C}$	0.001	1	μA
			$T_A = +85^\circ\text{C}$	0.01		
Peak Current Limit	I_{LIMP}	pFET switch	590	770	1400	mA
Valley Current Limit	I_{LIMN}	nFET rectifier	450	650	1300	mA
Rectifier Off-Current Threshold	I_{LXOFF}	nFET rectifier	10	40	70	mA
On-Resistance	R_{ONP}	pFET switch, $I_{\text{LX}} = -40\text{mA}$		0.6	1.2	Ω
	R_{ONN}	nFET rectifier, $I_{\text{LX}} = 40\text{mA}$		0.35	0.7	
LX Leakage Current	I_{LXLKG}	$V_{\text{IN}} = 5.5\text{V}$, LX = GND to IN, $\overline{\text{SHDN}} = \text{GND}$	$T_A = +25^\circ\text{C}$	0.1	1	μA
			$T_A = +85^\circ\text{C}$	1		
Minimum On and Off Times	$t_{\text{ON(MIN)}}$			95		ns
	$t_{\text{OFF(MIN)}}$			95		
Thermal Shutdown				+160		$^\circ\text{C}$
Thermal-Shutdown Hysteresis				20		$^\circ\text{C}$

Note 2: All devices are 100% production tested at $T_A = +25^\circ\text{C}$. Limits over the operating temperature range are guaranteed by design.

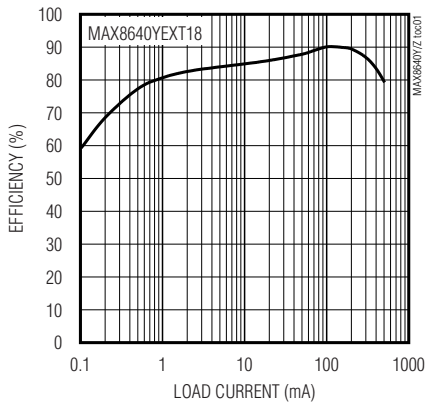
Tiny 500mA, 4MHz/2MHz Synchronous Step-Down DC-DC Converters

Typical Operating Characteristics

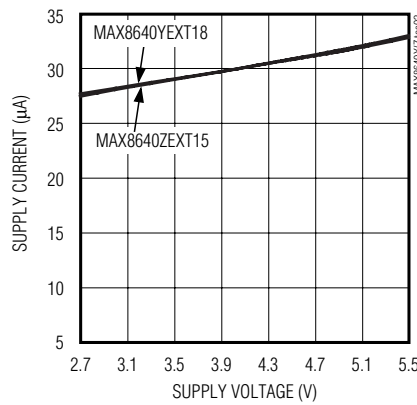
($V_{IN} = 3.6V$, $V_{OUT} = 1.5V$, MAX8640Z, L = Murata LQH32CN series, $T_A = +25^\circ C$, unless otherwise noted.)

MAX8640Y/MAX8640Z

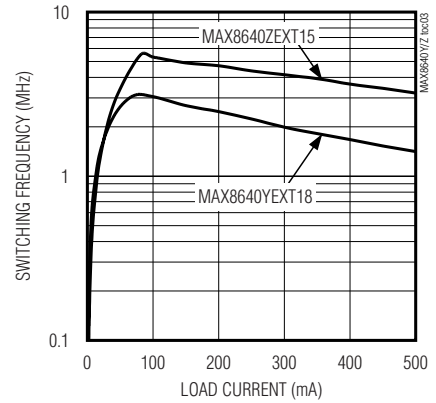
**EFFICIENCY vs. LOAD CURRENT
1.8V OUTPUT**



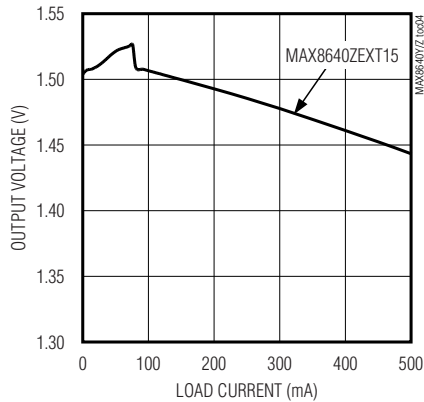
**NO-LOAD SUPPLY CURRENT
vs. SUPPLY VOLTAGE**



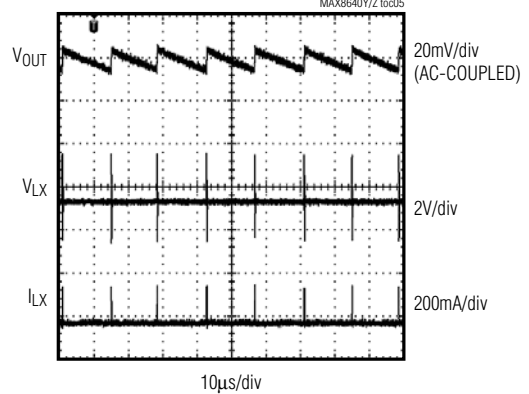
**SWITCHING FREQUENCY
vs. LOAD CURRENT**



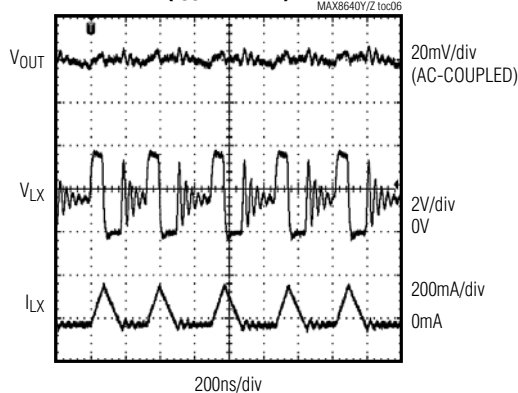
**OUTPUT VOLTAGE vs. LOAD CURRENT
(VOLTAGE POSITIONING)**



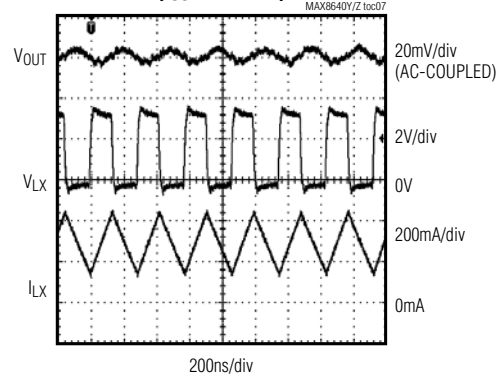
**LIGHT-LOAD SWITCHING WAVEFORMS
($I_{OUT} = 1mA$)**



**MEDIUM-LOAD SWITCHING WAVEFORMS
($I_{OUT} = 40mA$)**



**HEAVY-LOAD SWITCHING WAVEFORMS
($I_{OUT} = 300mA$)**

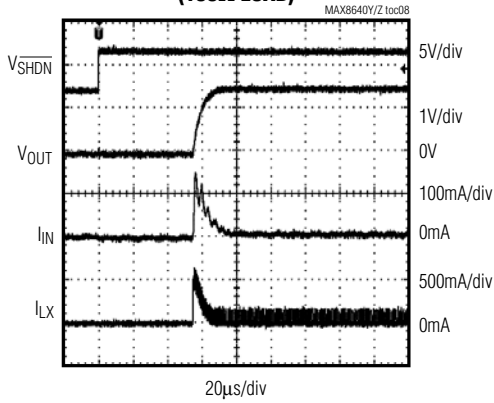


Tiny 500mA, 4MHz/2MHz Synchronous Step-Down DC-DC Converters

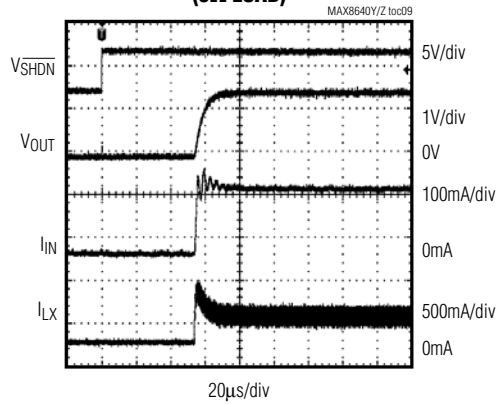
Typical Operating Characteristics (continued)

($V_{IN} = 3.6V$, $V_{OUT} = 1.5V$, MAX8640Z, L = Murata LQH32CN series, $T_A = +25^\circ C$, unless otherwise noted.)

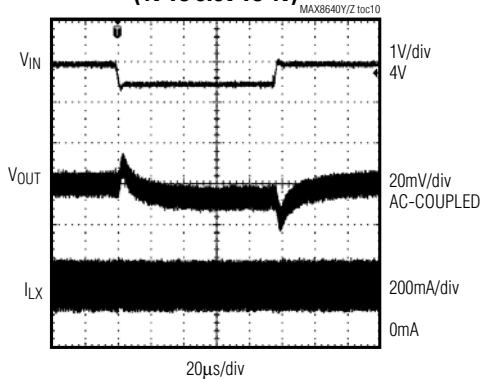
LIGHT-LOAD STARTUP WAVEFORM
(100Ω LOAD)



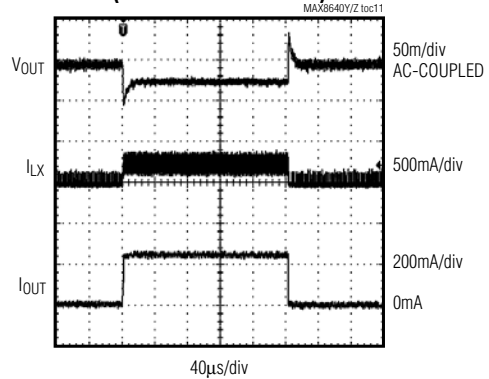
HEAVY-LOAD STARTUP WAVEFORM
(5Ω LOAD)



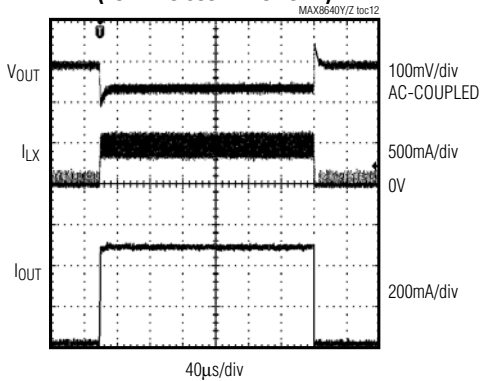
LINE-TRANSIENT RESPONSE
(4V TO 3.5V TO 4V)



LOAD-TRANSIENT RESPONSE
(5mA TO 250mA TO 5mA)



LOAD-TRANSIENT RESPONSE
(10mA TO 500mA TO 10mA)



Tiny 500mA, 4MHz/2MHz Synchronous Step-Down DC-DC Converters

Soft-Start

The MAX8640Y/MAX8640Z include internal soft-start circuitry that eliminates inrush current at startup, reducing transients on the input source. Soft-start is particularly useful for higher impedance input sources, such as Li+ and alkaline cells. See the Soft-Start Response in the *Typical Operating Characteristics*.

Applications Information

The MAX8640Y/MAX8640Z are optimized for use with a tiny inductor and small ceramic capacitors. The correct selection of external components ensures high efficiency, low output ripple, and fast transient response.

Inductor Selection

A 1 μ H inductor is recommended for use with the MAX8640Z, and 2.2 μ H is recommended for the MAX8640Y. A 1 μ H inductor is physically smaller but requires faster switching, resulting in some efficiency loss. Table 1 lists several recommended inductors.

It is acceptable to use a 1.5 μ H inductor with either the MAX8640Y or MAX8640Z, but efficiency and ripple should be verified. Similarly, it is acceptable to use a 3.3 μ H inductor with the MAX8640Y, but performance should be verified.

For optimum voltage positioning of load transients, choose an inductor with DC series resistance in the 75m Ω to 150m Ω range. For higher efficiency at heavy loads (above 200mA) or minimal load regulation (but some transient overshoot), the resistance should be kept as low as possible. For light-load applications up to 200mA, higher resistance is acceptable with very little impact on performance.

Capacitor Selection

Output Capacitor

The output capacitor, C2, is required to keep the output voltage ripple small and to ensure regulation loop stability. C2 must have low impedance at the switching frequency. Ceramic capacitors are recommended due to

Table 1. Suggested Inductors

MANUFACTURER	SERIES	INDUCTANCE (μ H)	DC RESISTANCE (Ω typ)	CURRENT RATING (mA)	DIMENSIONS L x W x H (mm)
FDK	MIPFT2520D	2.0	0.16	900	2.5 x 2.0 x 0.5
	MIPF2520D	1.5	0.07	1500	2.5 x 2.0 x 1.0
		2.2	0.08	1300	
Murata	LQM31P	3.3	0.10	1200	3.2 x 1.6 x 0.95
		1.0	0.12	1200	
		1.5	0.16	1000	
Sumida	CDRH2D09	2.2	0.22	900	3.0 x 3.0 x 1.0
		1.2	0.08	590	
		1.5	0.09	520	
Taiyo Yuden	CKP3216T	2.2	0.12	440	3.2 x 1.6 x 0.9
		1.0	0.11	1100	
		1.5	0.13	1000	
TDK	GLF201208T	2.2	0.14	900	2.0 x 1.25 x 0.9
		1.0	0.15	460	
	GLF2012T	2.2	0.36	300	2.0 x 1.25 x 1.35
		1.0	0.07	400	
	GLF251812T	2.2	0.10	300	2.5 x 1.8 x 1.35
		1.0	0.10	800	
TOKO	MDT2520-CR	2.2	0.20	600	2.5 x 2.0 x 1.0
		1.0	0.05	1000	
	D2812C	2.2	0.08	700	2.8 x 2.8 x 1.2
		1.0	0.07	1100	
		2.2	0.14	770	

Tiny 500mA, 4MHz/2MHz Synchronous Step-Down DC-DC Converters

their small size and low ESR. Make sure the capacitor maintains its capacitance over temperature and DC bias. Capacitors with X5R or X7R temperature characteristics typically perform well. The output capacitance can be very low; see the *Selector Guide* for recommended capacitance values. For optimum load-transient performance and very low output ripple, the output capacitor value in μF should be equal to or larger than the inductor value in μH .

Input Capacitor

The input capacitor, C1, reduces the current peaks drawn from the battery or input power source and reduces switching noise in the IC. The impedance of C1 at the switching frequency should be kept very low. Ceramic capacitors are recommended due to their small size and low ESR. Make sure the capacitor maintains its capacitance over temperature and DC bias. Capacitors with X5R or X7R temperature characteristics

Selector Guide

PART	OUTPUT VOLTAGE (V)	FREQUENCY (MHz)	RECOMMENDED COMPONENTS		TOP MARK
			L1 (μH)	C2 (μF)	
MAX8640Y EXT08	0.8	1.2	2.2	10	ACQ
MAX8640YEXT11	1.1	1.7	2.2	4.7	ACR
MAX8640YEXT12	1.2	1.8	2.2	4.7	ACS
MAX8640YEXT13	1.3	1.9	2.2	4.7	ACG
MAX8640YEXT15	1.5	2.0	2.2	4.7	ADD
MAX8640YEXT16	1.6	2.0	2.2	4.7	ADB
MAX8640YEXT18	1.8	2.0	2.2	4.7	ACI
MAX8640YEXT19	1.9	2.0	2.2	4.7	ACH
MAX8640YEXT25	2.5	1.7	2.2	4.7	ACJ
MAX8640YELT08	0.8	1.2	2.2	10	NB
MAX8640YELT11	1.1	1.7	2.2	4.7	NC
MAX8640YELT12	1.2	1.8	2.2	4.7	ND
MAX8640YELT13	1.3	1.9	2.2	4.7	NE
MAX8640YELT15	1.5	2.0	2.2	4.7	NF
MAX8640YELT16	1.6	2.0	2.2	4.7	NG
MAX8640YELT18	1.8	2.0	2.2	4.7	NH
MAX8640YELT19	1.9	2.0	2.2	4.7	NI
MAX8640YELT25	2.5	1.7	2.2	4.7	NJ
MAX8640Z EXT08	0.8	2.4	1	4.7	ACL
MAX8640ZEXT11	1.1	3.4	1	2.2	ACM
MAX8640ZEXT12	1.2	3.6	1	2.2	ACN
MAX8640ZEXT13	1.3	3.7	1	2.2	ACO
MAX8640ZEXT15	1.5	3.9	1	2.2	ACP
MAX8640ZEXT18	1.8	4.0	1	2.2	ACU
MAX8640ZELT08	0.8	2.4	1	4.7	NK
MAX8640ZELT11	1.1	3.4	1	2.2	NL
MAX8640ZELT12	1.2	3.6	1	2.2	NM
MAX8640ZELT13	1.3	3.7	1	2.2	NN
MAX8640ZELT15	1.5	3.9	1	2.2	NO
MAX8640ZELT18	1.8	4.0	1	2.2	NP

MAX8640Y/MAX8640Z

Tiny 500mA, 4MHz/2MHz Synchronous Step-Down DC-DC Converters

Ordering Information (continued)

PART*	PIN-PACKAGE	PKG CODE	TOP MARK
MAX8640YELT08+T	6 μ DFN-6	L611-1	NB
MAX8640YELT11+T	6 μ DFN-6	L611-1	NC
MAX8640YELT12+T	6 μ DFN-6	L611-1	ND
MAX8640YELT13+T	6 μ DFN-6	L611-1	NE
MAX8640YELT15+T	6 μ DFN-6	L611-1	NF
MAX8640YELT16+T	6 μ DFN-6	L611-1	NG
MAX8640YELT18+T	6 μ DFN-6	L611-1	NH
MAX8640YELT19+T	6 μ DFN-6	L611-1	NI
MAX8640YELT25+T	6 μ DFN-6	L611-1	NJ
MAX8640Z EXT08+T	6 SC70-6	X6S-1	ACL
MAX8640ZEXT11+T	6 SC70-6	X6S-1	ACM
MAX8640ZEXT12+T	6 SC70-6	X6S-1	ACN
MAX8640ZEXT13+T	6 SC70-6	X6S-1	ACO
MAX8640ZEXT15+T	6 SC70-6	X6S-1	ACP
MAX8640ZEXT18+T	6 SC70-6	X6S-1	ACU
MAX8640ZELT08+T	6 μ DFN-6	L611-1	NK
MAX8640ZELT11+T	6 μ DFN-6	L611-1	NL
MAX8640ZELT12+T	6 μ DFN-6	L611-1	NM
MAX8640ZELT13+T	6 μ DFN-6	L611-1	NN
MAX8640ZELT15+T	6 μ DFN-6	L611-1	NO
MAX8640ZELT18+T	6 μ DFN-6	L611-1	NP

*Contact factory for availability of each version.

+Denotes a lead-free package.

T = Tape and reel.

Note: All devices are specified over the -40°C to +85°C operating temperature range.

typically perform well. Due to the MAX8640Y/MAX8640Z soft-start, the input capacitance can be very low. For optimum noise immunity and low input ripple, choose a capacitor value in μ F that is equal to or larger than the inductor's value in μ H.

PCB Layout and Routing

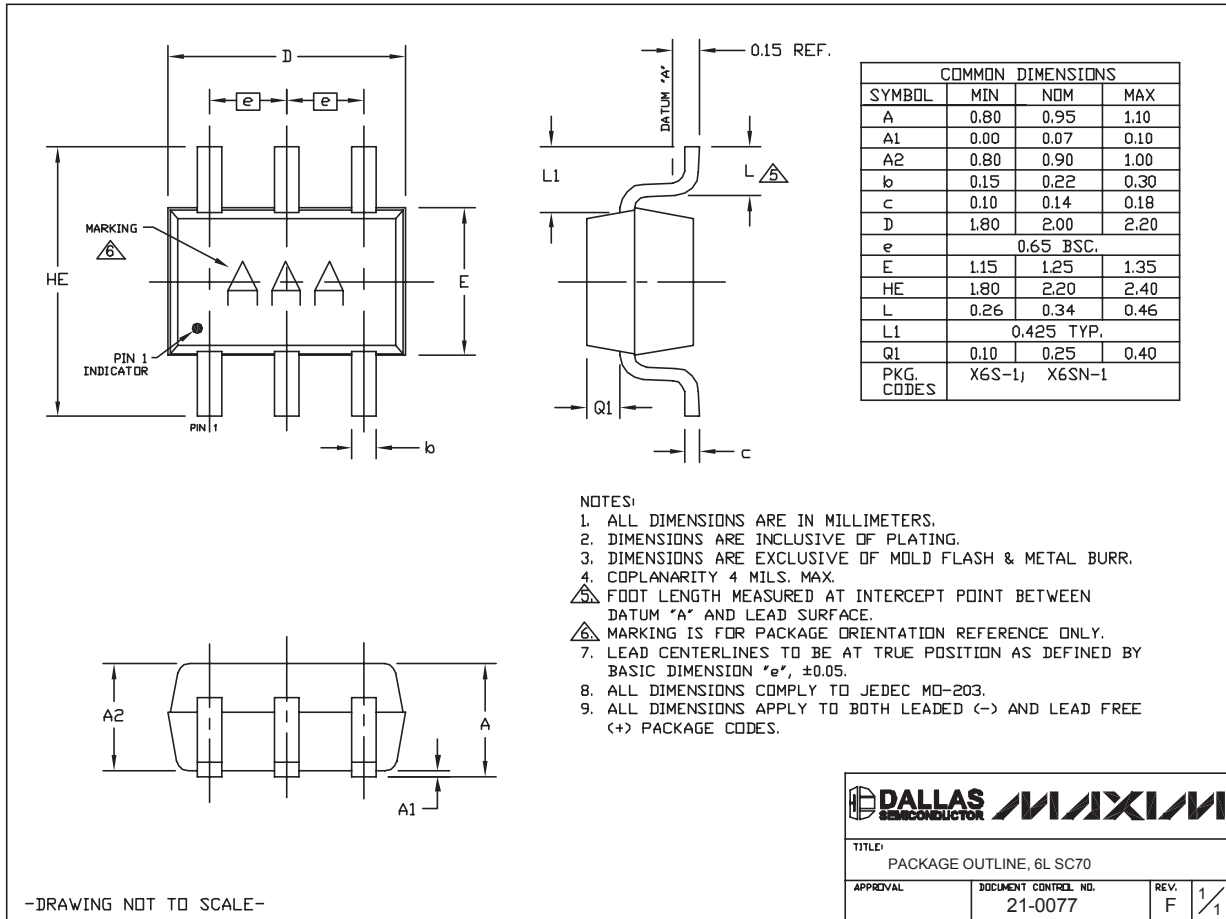
High switching frequencies and large peak currents make PCB layout a very important part of design. Good design minimizes excessive EMI on the feedback paths and voltage gradients in the ground plane, both of which can result in instability or regulation errors. Connect the inductor, input capacitor, and output capacitor as close together as possible, and keep their traces short, direct, and wide. Connect the two GND pins under the IC and directly to the grounds of the input and output capacitors. Keep noisy traces, such as the LX node, as short as possible. Refer to the MAX8640Z evaluation kit for an example PCB layout and routing scheme.

Tiny 500mA, 4MHz/2MHz Synchronous Step-Down DC-DC Converters

Package Information

(The package drawing(s) in this data sheet may not reflect the most current specifications. For the latest package outline information, go to www.maxim-ic.com/packages.)

MAX8640Y/MAX8640Z

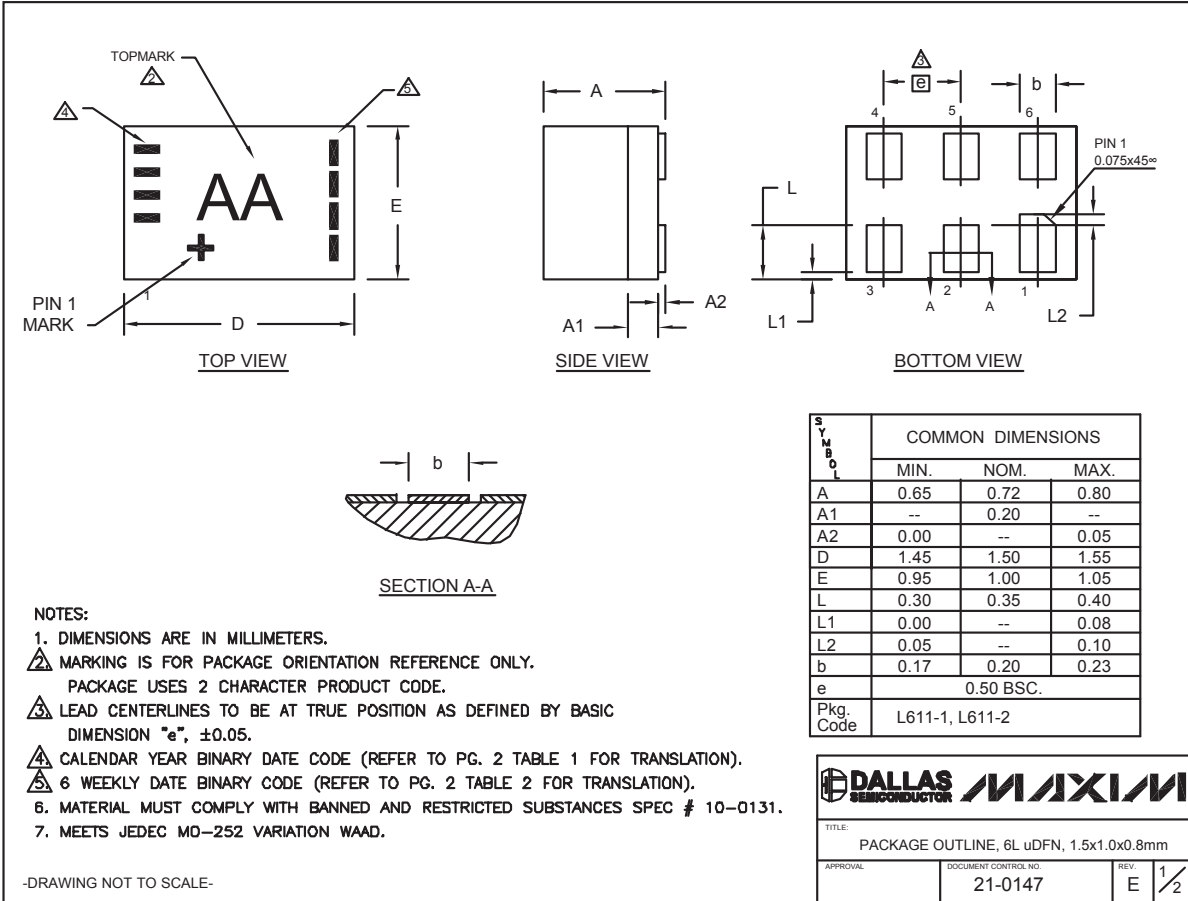


SC70, 6L-EP5

Tiny 500mA, 4MHz/2MHz Synchronous Step-Down DC-DC Converters

Package Information (continued)

(The package drawing(s) in this data sheet may not reflect the most current specifications. For the latest package outline information, go to www.maxim-ic.com/packages.)



6L uDFN.EPS

Tiny 500mA, 4MHz/2MHz Synchronous Step-Down DC-DC Converters

MAX8640Y/MAX8640Z

Package Information (continued)

(The package drawing(s) in this data sheet may not reflect the most current specifications. For the latest package outline information, go to www.maxim-ic.com/packages.)

TABLE 1		Translation Table for Calendar Year Code									
Calendar Year	2005	2006	2007	2008	2009	2010	2011	2012	2013	2014	

Legend: Marked with bar Blank space - no bar required

TABLE 2		Translation Table for Payweek Binary Coding									
Payweek	06-11	12-17	18-23	24-29	30-35	36-41	42-47	48-51	52-05		

Legend: Marked with bar Blank space - no bar required

TITLE: PACKAGE OUTLINE, 6L uDFN, 1.5x1.0x0.8mm		
APPROVAL:	DOCUMENT CONTROL NO: 21-0147	REV: E 2/2

-DRAWING NOT TO SCALE-

Revision History

Pages changed at Rev 1: All
Pages changed at Rev 2: 1, 7, 8-11

Chip Information

PROCESS: BiCMOS

Maxim cannot assume responsibility for use of any circuitry other than circuitry entirely embodied in a Maxim product. No circuit patent licenses are implied. Maxim reserves the right to change the circuitry and specifications without notice at any time.

Maxim Integrated Products, 120 San Gabriel Drive, Sunnyvale, CA 94086 408-737-7600 _____ 11