

Coaxial Amplifier

50Ω High Power 5 to 500 MHz

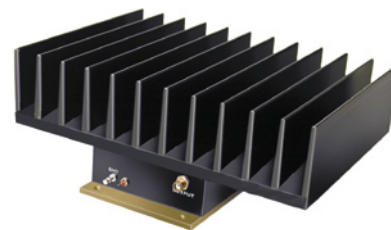
ZHL-5W-1

Features

- wideband, 5 to 500 MHz
- high power output, +37 dBm min.
- high gain, 40 dB min.
- low noise, 4 dB typ.
- high IP3, +49 dBm typ.

Applications

- VHF/UHF
- instrumentation
- laboratory



CASE STYLE: DDD131

Connectors	Model	Price	Qty.
SMA	ZHL-5W-1	\$995.00	(1-9)

Amplifier Electrical Specifications

MODEL NO.	FREQUENCY (MHz)		GAIN (dB)		MAXIMUM POWER (dBm)		DYNAMIC RANGE		VSWR (:1)		DC POWER	
	f_L	f_U	Min.	Flatness Max.	Output (1 dB compr.) Min.	Input (no damage)	NF (dB) Typ.	IP3 (dBm) Typ.	In	Out	Volt (V)	Current (A)
ZHL-5W-1	5	500	40	±1.7	+37	0	4	+49	2.0	2.5	24	3.3

Open load is not recommended, potentially can cause damage.
With no load derate max input power by 20 dB

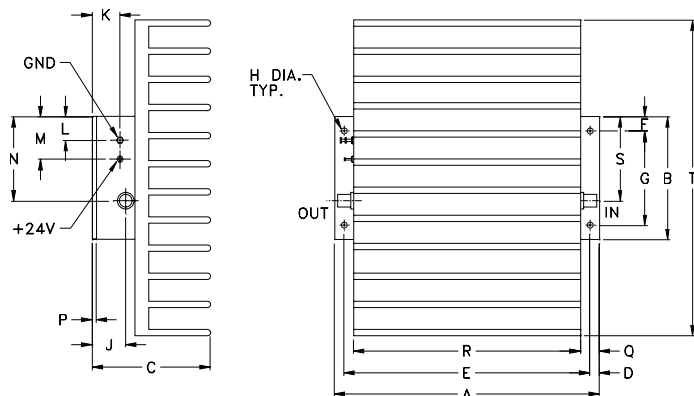
Maximum Ratings

Operating Temperature -20°C to 65°C

Storage Temperature -55°C to 100°C

DC Voltage +25V Max.

Outline Drawing



Outline Dimensions (inch/mm)

A	B	C	D	E	F	G	H	J	K
7.00	3.25	3.13	.25	6.500	.38	2.500	.156	.88	.43
177.80	82.55	79.50	6.35	165.10	9.65	63.50	3.96	22.35	10.92
L	M	N	P	Q	R	S	T	wt	
.62	1.00	2.63	.125	.50	6.00	2.23	8.35	grams	
15.75	25.40	66.80	3.18	12.70	152.40	56.64	212.09	1884	



INTERNET <http://www.minicircuits.com>

P.O. Box 350166, Brooklyn, New York 11235-0003 (718) 934-4500 Fax (718) 332-4661

Distribution Centers NORTH AMERICA 800-654-7949 • 417-335-5935 • Fax 417-335-5945 • EUROPE 44-1252-832600 • Fax 44-1252-837010

Mini-Circuits ISO 9001 & ISO 14001 Certified

REV. OR
M98142
ZHL-5W-1
051121
Page 1 of 2

FREQUENCY (MHz)	GAIN (dB)			VSWR (:1)		POUT at 1 dB COMPR. (dBm)	FREQUENCY (MHz)	NOISE FIGURE (dB)
	23V	24V	25	IN	OUT			
5.00	44.82	44.8	44.79	1.41	2.24	38.75	10.00	4.67
10.00	45.77	45.76	45.71	1.18	2.22	39.69	100.00	3.79
50.00	45.99	45.96	45.93	1.12	2.22	39.68	200.00	3.87
100.00	46.37	46.40	46.40	1.09	2.30	39.68	300.00	3.96
140.00	46.26	46.32	46.35	1.19	2.23	39.71	500.00	3.91
180.00	46.13	46.22	46.27	1.26	2.15	39.59		
200.00	46.12	46.16	46.23	1.26	2.16	39.54		
240.00	45.76	45.80	45.87	1.17	2.14	39.58		
260.00	45.32	45.43	45.47	1.14	2.09	39.64		
300.00	44.40	44.48	44.50	1.27	2.01	39.56		
360.00	44.72	44.82	44.87	1.50	2.07	39.49		
400.00	46.08	46.18	46.23	1.48	2.08	39.23		
440.00	45.69	45.81	45.93	1.43	1.88	39.01		
480.00	43.67	43.80	43.92	1.51	1.68	38.11		
500.00	42.93	43.03	43.15	1.51	1.71	37.42		

