

TOSHIBA Bipolar Linear Integrated Circuit Silicon Monolithic

TA79005SB, TA79006SB, TA79007SB, TA79008SB, TA79009SB, TA79010SB, TA79012SB, TA79015SB, TA79018SB, TA79020SB, TA79024SB

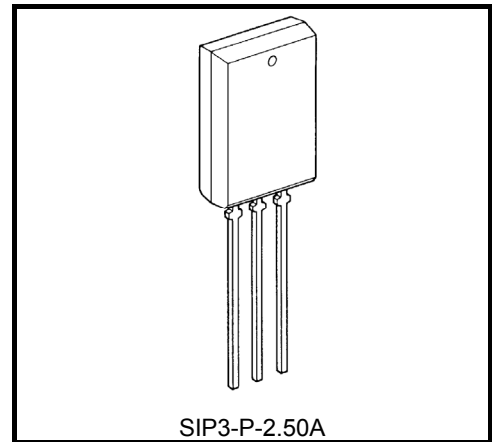
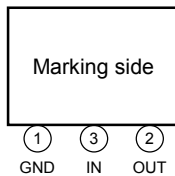
Output Current of 1A, Three-Terminal Negative Voltage Regulators

-5 V, -6 V, -7 V, -8 V, -9 V, -10 V, -12 V, -15 V, -18 V, -20 V, -24 V

Features

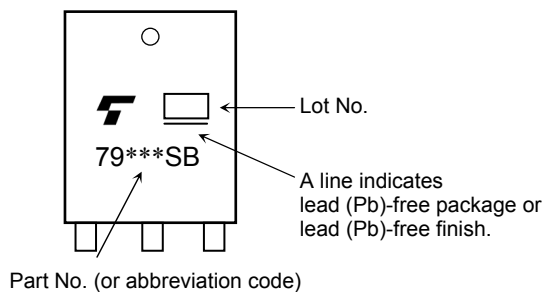
- Suitable for CMOS, TTL, and the and the power supply of other digital ICs
- Internal thermal overload protection
- Internal short circuit current limiting
- Maximum output current of 1.0 A
- Package in the plastic case TPL ($P_D = 1.8 \text{ W}$)

Pin Assignment

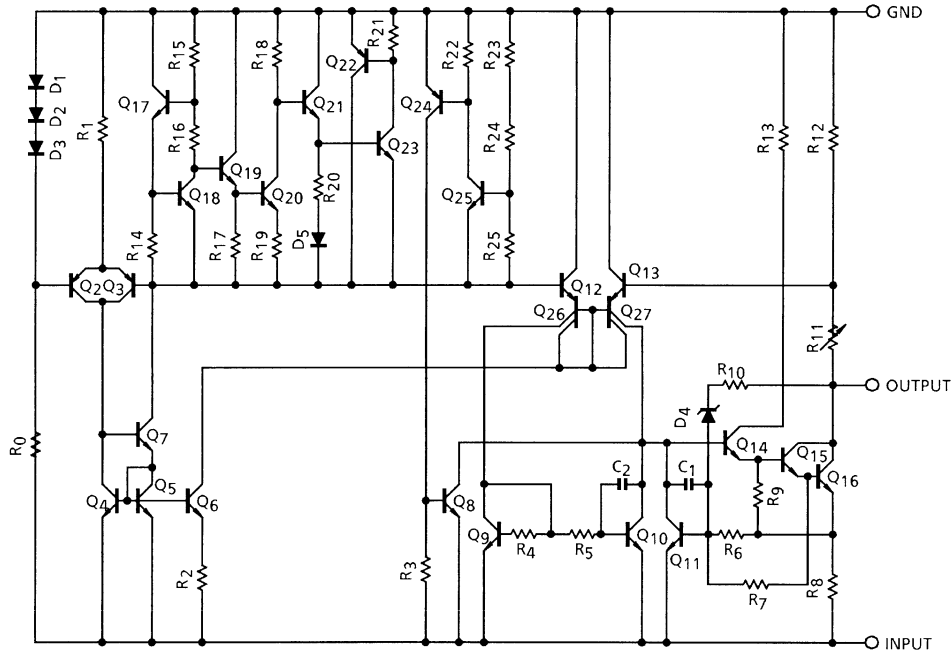


Weight: 1.5 g (typ.)

Marking



Equivalent Circuit



Absolute Maximum Ratings (Ta = 25°C)

Characteristics	Symbol	Rating	Unit			
Input voltage	V _{IN}	-35	V			
		-40				
		Power dissipation (Ta = 25°C)		P _D	1.8	W
		Operating temperature		T _{opr}	-30~85	°C
		Storage temperature		T _{stg}	-55~150	°C
		Junction temperature		T _j	150	°C
		Thermal resistance		R _{th(j-a)}	69.5	°C/W

Note: Using continuously under heavy loads (e.g. the application of high temperature/current/voltage and the significant change in temperature, etc.) may cause this product to decrease in the reliability significantly even if the operating conditions (i.e. operating temperature/current/voltage, etc.) are within the absolute maximum ratings and the operating ranges.

Please design the appropriate reliability upon reviewing the Toshiba Semiconductor Reliability Handbook ("Handling Precautions"/Derating Concept and Methods) and individual reliability data (i.e. reliability test report and estimated failure rate, etc).

TA79005SB

Electrical Characteristics

(Unless otherwise specified, $V_{IN} = -10\text{ V}$, $I_{OUT} = 500\text{ mA}$, $0^\circ\text{C} \leq T_j \leq 125^\circ\text{C}$, $C_{IN} = 0.33\ \mu\text{F}$, $C_{OUT} = 0.1\ \mu\text{F}$)

Characteristics	Symbol	Test Circuit	Test Condition	Min	Typ.	Max	Unit	
Output voltage	V_{OUT}	1	$T_j = 25^\circ\text{C}$	-5.2	-5.0	-4.8	V	
Line regulation	Reg-line	1	$T_j = 25^\circ\text{C}$	$-12\text{ V} \leq V_{IN} \leq -8\text{ V}$	—	7	50	mV
				$-25\text{ V} \leq V_{IN} \leq -7\text{ V}$	—	35	100	
Load regulation	Reg-load	1	$T_j = 25^\circ\text{C}$	$5\text{ mA} \leq I_{OUT} \leq 1.5\text{ A}$	—	11	100	mV
				$250\text{ mA} \leq I_{OUT} \leq 750\text{ mA}$	—	4	50	
Output voltage	V_{OUT}	1	$T_j = 25^\circ\text{C}$	-5.25	—	-4.75	V	
Quiescent current	I_B	1	$T_j = 25^\circ\text{C}$	—	4.3	8.0	mA	
Quiescent current change	Line	ΔI_B	$T_j = 25^\circ\text{C}$	$-25\text{ V} \leq V_{IN} \leq -7\text{ V}$	—	—	1.3	mA
	Load			$5\text{ mA} \leq I_{OUT} \leq 1.0\text{ A}$	—	—	0.5	
Output noise voltage	V_{NO}	2	$T_a = 25^\circ\text{C}$, $I_{OUT} = 20\text{ mA}$, $10\text{ Hz} \leq f \leq 100\text{ kHz}$	—	40	—	μV_{rms}	
Ripple rejection	R.R.	3	$f = 120\text{ Hz}$, $I_{OUT} = 20\text{ mA}$, $T_j = 25^\circ\text{C}$	63	70	—	dB	
Short circuit current limit	I_{SC}	1	$T_j = 25^\circ\text{C}$	—	1.9	—	A	
Dropout voltage	V_D	1	$T_j = 25^\circ\text{C}$, $I_{OUT} = 1.0\text{ A}$	—	2.0	—	V	
Average temperature coefficient of output voltage	T_{CVO}	1	$I_{OUT} = 5.0\text{ mA}$	—	0.6	—	$\text{mV}/^\circ\text{C}$	

TA79006SB

Electrical Characteristics

(Unless otherwise specified, $V_{IN} = -11\text{ V}$, $I_{OUT} = 500\text{ mA}$, $0^\circ\text{C} \leq T_j \leq 125^\circ\text{C}$, $C_{IN} = 0.33\ \mu\text{F}$, $C_{OUT} = 0.1\ \mu\text{F}$)

Characteristics	Symbol	Test Circuit	Test Condition	Min	Typ.	Max	Unit	
Output voltage	V_{OUT}	1	$T_j = 25^\circ\text{C}$	-6.25	-6.0	-5.75	V	
Line regulation	Reg-line	1	$T_j = 25^\circ\text{C}$	$-13\text{ V} \leq V_{IN} \leq -9\text{ V}$	—	9	60	mV
				$-25\text{ V} \leq V_{IN} \leq -8\text{ V}$	—	43	120	
Load regulation	Reg-load	1	$T_j = 25^\circ\text{C}$	$5\text{ mA} \leq I_{OUT} \leq 1.5\text{ A}$	—	13	120	mV
				$250\text{ mA} \leq I_{OUT} \leq 750\text{ mA}$	—	5	60	
Output voltage	V_{OUT}	1	$T_j = 25^\circ\text{C}$	-6.3	—	-5.7	V	
Quiescent current	I_B	1	$T_j = 25^\circ\text{C}$	—	4.3	8.0	mA	
Quiescent current change	Line	ΔI_B	$T_j = 25^\circ\text{C}$	$-25\text{ V} \leq V_{IN} \leq -8\text{ V}$	—	—	1.3	mA
	Load			$5\text{ mA} \leq I_{OUT} \leq 1.0\text{ A}$	—	—	0.5	
Output noise voltage	V_{NO}	2	$T_a = 25^\circ\text{C}$, $I_{OUT} = 20\text{ mA}$, $10\text{ Hz} \leq f \leq 100\text{ kHz}$	—	45	—	μV_{rms}	
Ripple rejection	R.R.	3	$f = 120\text{ Hz}$, $I_{OUT} = 20\text{ mA}$, $T_j = 25^\circ\text{C}$	61	68	—	dB	
Short circuit current limit	I_{SC}	1	$T_j = 25^\circ\text{C}$	—	1.9	—	A	
Dropout voltage	V_D	1	$T_j = 25^\circ\text{C}$, $I_{OUT} = 1.0\text{ A}$	—	2.0	—	V	
Average temperature coefficient of output voltage	T_{CVO}	1	$I_{OUT} = 5.0\text{ mA}$	—	0.7	—	$\text{mV}/^\circ\text{C}$	

TA79007SB

Electrical Characteristics

(Unless otherwise specified, $V_{IN} = -12\text{ V}$, $I_{OUT} = 500\text{ mA}$, $0^\circ\text{C} \leq T_j \leq 125^\circ\text{C}$, $C_{IN} = 0.33\text{ }\mu\text{F}$, $C_{OUT} = 0.1\text{ }\mu\text{F}$)

Characteristics	Symbol	Test Circuit	Test Condition	Min	Typ.	Max	Unit	
Output voltage	V_{OUT}	1	$T_j = 25^\circ\text{C}$	-7.28	-7.0	-6.72	V	
Line regulation	Reg-line	1	$T_j = 25^\circ\text{C}$	$-15\text{ V} \leq V_{IN} \leq -10\text{ V}$	—	10	70	mV
				$-25\text{ V} \leq V_{IN} \leq -9\text{ V}$	—	45	140	
Load regulation	Reg-load	1	$T_j = 25^\circ\text{C}$	$5\text{ mA} \leq I_{OUT} \leq 1.5\text{ A}$	—	20	140	mV
				$250\text{ mA} \leq I_{OUT} \leq 750\text{ mA}$	—	7	70	
Output voltage	V_{OUT}	1	$T_j = 25^\circ\text{C}$	-7.35	—	-6.65	V	
Quiescent current	I_B	1	$T_j = 25^\circ\text{C}$	—	4.3	8.0	mA	
Quiescent current change	Line	ΔI_B	$T_j = 25^\circ\text{C}$	$-25\text{ V} \leq V_{IN} \leq -9\text{ V}$	—	—	1.0	mA
	Load			$5\text{ mA} \leq I_{OUT} \leq 1.0\text{ A}$	—	—	0.5	
Output noise voltage	V_{NO}	2	$T_a = 25^\circ\text{C}$, $I_{OUT} = 20\text{ mA}$, $10\text{ Hz} \leq f \leq 100\text{ kHz}$	—	49	—	μV_{rms}	
Ripple rejection	R.R.	3	$f = 120\text{ Hz}$, $I_{OUT} = 20\text{ mA}$, $T_j = 25^\circ\text{C}$	60	67	—	dB	
Short circuit current limit	I_{SC}	1	$T_j = 25^\circ\text{C}$	—	1.9	—	A	
Dropout voltage	V_D	1	$T_j = 25^\circ\text{C}$, $I_{OUT} = 1.0\text{ A}$	—	2.0	—	V	
Average temperature coefficient of output voltage	T_{CVO}	1	$I_{OUT} = 5.0\text{ mA}$	—	0.9	—	$\text{mV}/^\circ\text{C}$	

TA79008SB

Electrical Characteristics

(Unless otherwise specified, $V_{IN} = -14\text{ V}$, $I_{OUT} = 500\text{ mA}$, $0^\circ\text{C} \leq T_j \leq 125^\circ\text{C}$, $C_{IN} = 0.33\text{ }\mu\text{F}$, $C_{OUT} = 0.1\text{ }\mu\text{F}$)

Characteristics	Symbol	Test Circuit	Test Condition	Min	Typ.	Max	Unit	
Output voltage	V_{OUT}	1	$T_j = 25^\circ\text{C}$	-8.3	-8.0	-7.7	V	
Line regulation	Reg-line	1	$T_j = 25^\circ\text{C}$	$-17\text{ V} \leq V_{IN} \leq -11\text{ V}$	—	11	80	mV
				$-25\text{ V} \leq V_{IN} \leq -10.5\text{ V}$	—	47	160	
Load regulation	Reg-load	1	$T_j = 25^\circ\text{C}$	$5\text{ mA} \leq I_{OUT} \leq 1.5\text{ A}$	—	26	160	mV
				$250\text{ mA} \leq I_{OUT} \leq 750\text{ mA}$	—	9	80	
Output voltage	V_{OUT}	1	$T_j = 25^\circ\text{C}$	-8.4	—	-7.6	V	
Quiescent current	I_B	1	$T_j = 25^\circ\text{C}$	—	4.3	8.0	mA	
Quiescent current change	Line	ΔI_B	$T_j = 25^\circ\text{C}$	$-25\text{ V} \leq V_{IN} \leq -10.5\text{ V}$	—	—	1.0	mA
	Load			$5\text{ mA} \leq I_{OUT} \leq 1.0\text{ A}$	—	—	0.5	
Output noise voltage	V_{NO}	2	$T_a = 25^\circ\text{C}$, $I_{OUT} = 20\text{ mA}$, $10\text{ Hz} \leq f \leq 100\text{ kHz}$	—	52	—	μV_{rms}	
Ripple rejection	R.R.	3	$f = 120\text{ Hz}$, $I_{OUT} = 20\text{ mA}$, $T_j = 25^\circ\text{C}$	59	66	—	dB	
Short circuit current limit	I_{SC}	1	$T_j = 25^\circ\text{C}$	—	1.9	—	A	
Dropout voltage	V_D	1	$T_j = 25^\circ\text{C}$, $I_{OUT} = 1.0\text{ A}$	—	2.0	—	V	
Average temperature coefficient of output voltage	T_{CVO}	1	$I_{OUT} = 5.0\text{ mA}$	—	1.0	—	$\text{mV}/^\circ\text{C}$	

TA79009SB

Electrical Characteristics

(Unless otherwise specified, $V_{IN} = -15\text{ V}$, $I_{OUT} = 500\text{ mA}$, $0^\circ\text{C} \leq T_j \leq 125^\circ\text{C}$, $C_{IN} = 0.33\ \mu\text{F}$, $C_{OUT} = 0.1\ \mu\text{F}$)

Characteristics	Symbol	Test Circuit	Test Condition	Min	Typ.	Max	Unit	
Output voltage	V_{OUT}	1	$T_j = 25^\circ\text{C}$	-9.3	-9.0	-8.7	V	
Line regulation	Reg-line	1	$T_j = 25^\circ\text{C}$	$-19\text{ V} \leq V_{IN} \leq -13\text{ V}$	—	11	82	mV
				$-26\text{ V} \leq V_{IN} \leq -11.5\text{ V}$	—	48	162	
Load regulation	Reg-load	1	$T_j = 25^\circ\text{C}$	$5\text{ mA} \leq I_{OUT} \leq 1.5\text{ A}$	—	33	162	mV
				$250\text{ mA} \leq I_{OUT} \leq 750\text{ mA}$	—	11	82	
Output voltage	V_{OUT}	1	$T_j = 25^\circ\text{C}$	-9.4	—	-8.6	V	
Quiescent current	I_B	1	$T_j = 25^\circ\text{C}$	—	4.3	8.0	mA	
Quiescent current change	Line	ΔI_B	$T_j = 25^\circ\text{C}$	$-26.5\text{ V} \leq V_{IN} \leq -13\text{ V}$	—	—	1.0	mA
	Load			$5\text{ mA} \leq I_{OUT} \leq 1.0\text{ A}$	—	—	0.5	
Output noise voltage	V_{NO}	2	$T_a = 25^\circ\text{C}$, $I_{OUT} = 20\text{ mA}$, $10\text{ Hz} \leq f \leq 100\text{ kHz}$	—	60	—	μV_{rms}	
Ripple rejection	R.R.	3	$f = 120\text{ Hz}$, $I_{OUT} = 20\text{ mA}$, $T_j = 25^\circ\text{C}$	57	64	—	dB	
Short circuit current limit	I_{SC}	1	$T_j = 25^\circ\text{C}$	—	1.9	—	A	
Dropout voltage	V_D	1	$T_j = 25^\circ\text{C}$, $I_{OUT} = 1.0\text{ A}$	—	2.0	—	V	
Average temperature coefficient of output voltage	T_{CVO}	1	$I_{OUT} = 5.0\text{ mA}$	—	1.1	—	$\text{mV}/^\circ\text{C}$	

TA79010SB

Electrical Characteristics

(Unless otherwise specified, $V_{IN} = -16\text{ V}$, $I_{OUT} = 500\text{ mA}$, $0^\circ\text{C} \leq T_j \leq 125^\circ\text{C}$, $C_{IN} = 0.33\ \mu\text{F}$, $C_{OUT} = 0.1\ \mu\text{F}$)

Characteristics	Symbol	Test Circuit	Test Condition	Min	Typ.	Max	Unit	
Output voltage	V_{OUT}	1	$T_j = 25^\circ\text{C}$	-10.4	-10.0	-9.6	V	
Line regulation	Reg-line	1	$T_j = 25^\circ\text{C}$	$-20\text{ V} \leq V_{IN} \leq -14\text{ V}$	—	12	90	mV
				$-27\text{ V} \leq V_{IN} \leq -12.5\text{ V}$	—	50	180	
Load regulation	Reg-load	1	$T_j = 25^\circ\text{C}$	$5\text{ mA} \leq I_{OUT} \leq 1.5\text{ A}$	—	40	180	mV
				$250\text{ mA} \leq I_{OUT} \leq 750\text{ mA}$	—	13	90	
Output voltage	V_{OUT}	1	$T_j = 25^\circ\text{C}$	-10.5	—	-9.5	V	
Quiescent current	I_B	1	$T_j = 25^\circ\text{C}$	—	4.4	8.0	mA	
Quiescent current change	Line	ΔI_B	$T_j = 25^\circ\text{C}$	$-27.5\text{ V} \leq V_{IN} \leq -14\text{ V}$	—	—	1.0	mA
	Load			$5\text{ mA} \leq I_{OUT} \leq 1.0\text{ A}$	—	—	0.5	
Output noise voltage	V_{NO}	2	$T_a = 25^\circ\text{C}$, $I_{OUT} = 20\text{ mA}$, $10\text{ Hz} \leq f \leq 100\text{ kHz}$	—	65	—	μV_{rms}	
Ripple rejection	R.R.	3	$f = 120\text{ Hz}$, $I_{OUT} = 20\text{ mA}$, $T_j = 25^\circ\text{C}$	57	63	—	dB	
Short circuit current limit	I_{SC}	1	$T_j = 25^\circ\text{C}$	—	1.9	—	A	
Dropout voltage	V_D	1	$T_j = 25^\circ\text{C}$, $I_{OUT} = 1.0\text{ A}$	—	2.0	—	V	
Average temperature coefficient of output voltage	T_{CVO}	1	$I_{OUT} = 5.0\text{ mA}$	—	1.3	—	$\text{mV}/^\circ\text{C}$	

TA79012SB

Electrical Characteristics

(Unless otherwise specified, $V_{IN} = -19\text{ V}$, $I_{OUT} = 500\text{ mA}$, $0^\circ\text{C} \leq T_j \leq 125^\circ\text{C}$, $C_{IN} = 0.33\ \mu\text{F}$, $C_{OUT} = 0.1\ \mu\text{F}$)

Characteristics	Symbol	Test Circuit	Test Condition	Min	Typ.	Max	Unit	
Output voltage	V_{OUT}	1	$T_j = 25^\circ\text{C}$	-12.5	-12.0	-11.5	V	
Line regulation	Reg-line	1	$T_j = 25^\circ\text{C}$	$-22\text{ V} \leq V_{IN} \leq -16\text{ V}$	—	13	120	mV
				$-30\text{ V} \leq V_{IN} \leq -14.5\text{ V}$	—	55	240	
Load regulation	Reg-load	1	$T_j = 25^\circ\text{C}$	$5\text{ mA} \leq I_{OUT} \leq 1.5\text{ A}$	—	46	240	mV
				$250\text{ mA} \leq I_{OUT} \leq 750\text{ mA}$	—	17	120	
Output voltage	V_{OUT}	1	$T_j = 25^\circ\text{C}$	-12.6	—	-11.4	V	
Quiescent current	I_B	1	$T_j = 25^\circ\text{C}$	—	4.4	8.0	mA	
Quiescent current change	Line	ΔI_B	$T_j = 25^\circ\text{C}$	$-30\text{ V} \leq V_{IN} \leq -14.5\text{ V}$	—	—	1.0	mA
	Load			$5\text{ mA} \leq I_{OUT} \leq 1.0\text{ A}$	—	—	0.5	
Output noise voltage	V_{NO}	2	$T_a = 25^\circ\text{C}$, $I_{OUT} = 20\text{ mA}$, $10\text{ Hz} \leq f \leq 100\text{ kHz}$	—	75	—	μV_{rms}	
Ripple rejection	R.R.	3	$f = 120\text{ Hz}$, $I_{OUT} = 20\text{ mA}$, $T_j = 25^\circ\text{C}$	54	61	—	dB	
Short circuit current limit	I_{SC}	1	$T_j = 25^\circ\text{C}$	—	1.9	—	A	
Dropout voltage	V_D	1	$T_j = 25^\circ\text{C}$, $I_{OUT} = 1.0\text{ A}$	—	2.0	—	V	
Average temperature coefficient of output voltage	T_{CVO}	1	$I_{OUT} = 5.0\text{ mA}$	—	1.6	—	$\text{mV}/^\circ\text{C}$	

TA79015SB

Electrical Characteristics

(Unless otherwise specified, $V_{IN} = -23\text{ V}$, $I_{OUT} = 500\text{ mA}$, $0^\circ\text{C} \leq T_j \leq 125^\circ\text{C}$, $C_{IN} = 0.33\ \mu\text{F}$, $C_{OUT} = 0.1\ \mu\text{F}$)

Characteristics	Symbol	Test Circuit	Test Condition	Min	Typ.	Max	Unit	
Output voltage	V_{OUT}	1	$T_j = 25^\circ\text{C}$	-15.6	-15.0	-14.4	V	
Line regulation	Reg-line	1	$T_j = 25^\circ\text{C}$	$-26\text{ V} \leq V_{IN} \leq -20\text{ V}$	—	14	150	mV
				$-30\text{ V} \leq V_{IN} \leq -17.5\text{ V}$	—	57	300	
Load regulation	Reg-load	1	$T_j = 25^\circ\text{C}$	$5\text{ mA} \leq I_{OUT} \leq 1.5\text{ A}$	—	68	300	mV
				$250\text{ mA} \leq I_{OUT} \leq 750\text{ mA}$	—	25	150	
Output voltage	V_{OUT}	1	$T_j = 25^\circ\text{C}$	-15.75	—	-14.25	V	
Quiescent current	I_B	1	$T_j = 25^\circ\text{C}$	—	4.4	8.0	mA	
Quiescent current change	Line	ΔI_B	$T_j = 25^\circ\text{C}$	$-30\text{ V} \leq V_{IN} \leq -17.5\text{ V}$	—	—	1.0	mA
	Load			$5\text{ mA} \leq I_{OUT} \leq 1.0\text{ A}$	—	—	0.5	
Output noise voltage	V_{NO}	2	$T_a = 25^\circ\text{C}$, $I_{OUT} = 20\text{ mA}$, $10\text{ Hz} \leq f \leq 100\text{ kHz}$	—	90	—	μV_{rms}	
Ripple rejection	R.R.	3	$f = 120\text{ Hz}$, $I_{OUT} = 20\text{ mA}$, $T_j = 25^\circ\text{C}$	53	60	—	dB	
Short circuit current limit	I_{SC}	1	$T_j = 25^\circ\text{C}$	—	1.9	—	A	
Dropout voltage	V_D	1	$T_j = 25^\circ\text{C}$, $I_{OUT} = 1.0\text{ A}$	—	2.0	—	V	
Average temperature coefficient of output voltage	T_{CVO}	1	$I_{OUT} = 5.0\text{ mA}$	—	2.0	—	$\text{mV}/^\circ\text{C}$	

TA79018SB

Electrical Characteristics

(Unless otherwise specified, $V_{IN} = -27\text{ V}$, $I_{OUT} = 500\text{ mA}$, $0^\circ\text{C} \leq T_j \leq 125^\circ\text{C}$, $C_{IN} = 0.33\ \mu\text{F}$, $C_{OUT} = 0.1\ \mu\text{F}$)

Characteristics	Symbol	Test Circuit	Test Condition	Min	Typ.	Max	Unit	
Output voltage	V_{OUT}	1	$T_j = 25^\circ\text{C}$	-18.7	-18.0	-17.3	V	
Line regulation	Reg-line	1	$T_j = 25^\circ\text{C}$	$-30\text{ V} \leq V_{IN} \leq -24\text{ V}$	—	25	180	mV
				$-33\text{ V} \leq V_{IN} \leq -21\text{ V}$	—	80	360	
Load regulation	Reg-load	1	$T_j = 25^\circ\text{C}$	$5\text{ mA} \leq I_{OUT} \leq 1.5\text{ A}$	—	110	360	mV
				$250\text{ mA} \leq I_{OUT} \leq 750\text{ mA}$	—	55	180	
Output voltage	V_{OUT}	1	$T_j = 25^\circ\text{C}$	-18.85	—	-17.15	V	
Quiescent current	I_B	1	$T_j = 25^\circ\text{C}$	—	4.5	8.0	mA	
Quiescent current change	Line	ΔI_B	$T_j = 25^\circ\text{C}$	$-33\text{ V} \leq V_{IN} \leq -21\text{ V}$	—	—	1.0	mA
	Load			$5\text{ mA} \leq I_{OUT} \leq 1.0\text{ A}$	—	—	0.5	
Output noise voltage	V_{NO}	2	$T_a = 25^\circ\text{C}$, $I_{OUT} = 20\text{ mA}$, $10\text{ Hz} \leq f \leq 100\text{ kHz}$	—	110	—	μV_{rms}	
Ripple rejection	R.R.	3	$f = 120\text{ Hz}$, $I_{OUT} = 20\text{ mA}$, $T_j = 25^\circ\text{C}$	52	59	—	dB	
Short circuit current limit	I_{SC}	1	$T_j = 25^\circ\text{C}$	—	1.9	—	A	
Dropout voltage	V_D	1	$T_j = 25^\circ\text{C}$, $I_{OUT} = 1.0\text{ A}$	—	2.0	—	V	
Average temperature coefficient of output voltage	T_{CVO}	1	$I_{OUT} = 5.0\text{ mA}$	—	2.5	—	$\text{mV}/^\circ\text{C}$	

TA79020SB

Electrical Characteristics

(Unless otherwise specified, $V_{IN} = -30\text{ V}$, $I_{OUT} = 500\text{ mA}$, $0^\circ\text{C} \leq T_j \leq 125^\circ\text{C}$, $C_{IN} = 0.33\ \mu\text{F}$, $C_{OUT} = 0.1\ \mu\text{F}$)

Characteristics	Symbol	Test Circuit	Test Condition	Min	Typ.	Max	Unit	
Output voltage	V_{OUT}	1	$T_j = 25^\circ\text{C}$	-20.8	-20.0	-19.2	V	
Line regulation	Reg-line	1	$T_j = 25^\circ\text{C}$	$-32\text{ V} \leq V_{IN} \leq -26\text{ V}$	—	28	180	mV
				$-35\text{ V} \leq V_{IN} \leq -24\text{ V}$	—	104	360	
Load regulation	Reg-load	1	$T_j = 25^\circ\text{C}$	$5\text{ mA} \leq I_{OUT} \leq 1.5\text{ A}$	—	130	360	mV
				$250\text{ mA} \leq I_{OUT} \leq 750\text{ mA}$	—	70	180	
Output voltage	V_{OUT}	1	$T_j = 25^\circ\text{C}$	-21.0	—	-19.0	V	
Quiescent current	I_B	1	$T_j = 25^\circ\text{C}$	—	4.6	8.0	mA	
Quiescent current change	Line	ΔI_B	$T_j = 25^\circ\text{C}$	$-36.5\text{ V} \leq V_{IN} \leq -25\text{ V}$	—	—	1.0	mA
	Load			$5\text{ mA} \leq I_{OUT} \leq 1.0\text{ A}$	—	—	0.5	
Output noise voltage	V_{NO}	2	$T_a = 25^\circ\text{C}$, $I_{OUT} = 20\text{ mA}$, $10\text{ Hz} \leq f \leq 100\text{ kHz}$	—	140	—	μV_{rms}	
Ripple rejection	R.R.	3	$f = 120\text{ Hz}$, $I_{OUT} = 20\text{ mA}$, $T_j = 25^\circ\text{C}$	50	57	—	dB	
Short circuit current limit	I_{SC}	1	$T_j = 25^\circ\text{C}$	—	1.9	—	A	
Dropout voltage	V_D	1	$T_j = 25^\circ\text{C}$, $I_{OUT} = 1.0\text{ A}$	—	2.0	—	V	
Average temperature coefficient of output voltage	T_{CVO}	1	$I_{OUT} = 5.0\text{ mA}$	—	3.0	—	$\text{mV}/^\circ\text{C}$	

TA79024SB

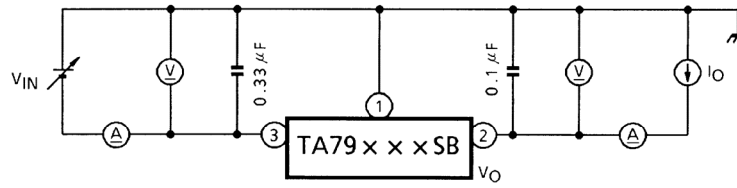
Electrical Characteristics

(Unless otherwise specified, $V_{IN} = -33\text{ V}$, $I_{OUT} = 500\text{ mA}$, $0^\circ\text{C} \leq T_j \leq 125^\circ\text{C}$, $C_{IN} = 0.33\text{ }\mu\text{F}$, $C_{OUT} = 0.1\text{ }\mu\text{F}$)

Characteristics	Symbol	Test Circuit	Test Condition	Min	Typ.	Max	Unit	
Output voltage	V_{OUT}	1	$T_j = 25^\circ\text{C}$	-25.0	-24.0	-23.0	V	
Line regulation	Reg-line	1	$T_j = 25^\circ\text{C}$	$-36\text{ V} \leq V_{IN} \leq -30\text{ V}$	—	31	240	mV
				$-38\text{ V} \leq V_{IN} \leq -27\text{ V}$	—	118	480	
Load regulation	Reg-load	1	$T_j = 25^\circ\text{C}$	$5\text{ mA} \leq I_{OUT} \leq 1.5\text{ A}$	—	150	480	mV
				$250\text{ mA} \leq I_{OUT} \leq 750\text{ mA}$	—	85	240	
Output voltage	V_{OUT}	1	$T_j = 25^\circ\text{C}$	-25.2	—	-22.8	V	
Quiescent current	I_B	1	$T_j = 25^\circ\text{C}$	—	4.6	8.0	mA	
Quiescent current change	Line	ΔI_B	$T_j = 25^\circ\text{C}$	$-38\text{ V} \leq V_{IN} \leq -27\text{ V}$	—	—	1.0	mA
	Load			$5\text{ mA} \leq I_{OUT} \leq 1.0\text{ A}$	—	—	0.5	
Output noise voltage	V_{NO}	2	$T_a = 25^\circ\text{C}$, $I_{OUT} = 20\text{ mA}$, $10\text{ Hz} \leq f \leq 100\text{ kHz}$	—	170	—	μV_{rms}	
Ripple rejection	R.R.	3	$f = 120\text{ Hz}$, $I_{OUT} = 20\text{ mA}$, $T_j = 25^\circ\text{C}$	49	56	—	dB	
Short circuit current limit	I_{SC}	1	$T_j = 25^\circ\text{C}$	—	1.9	—	A	
Dropout voltage	V_D	1	$T_j = 25^\circ\text{C}$, $I_{OUT} = 1.0\text{ A}$	—	2.0	—	V	
Average temperature coefficient of output voltage	T_{CVO}	1	$I_{OUT} = 5.0\text{ mA}$	—	3.5	—	$\text{mV}/^\circ\text{C}$	

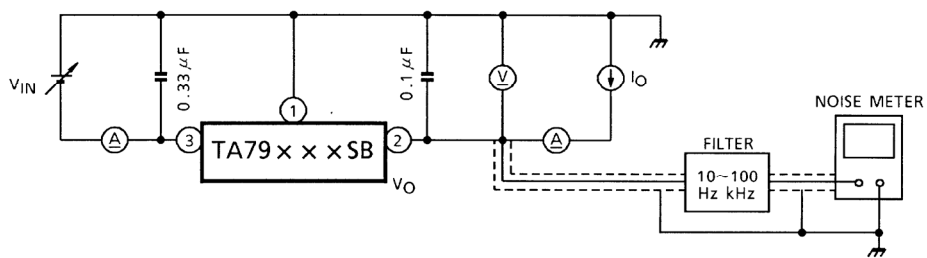
Test Circuit 1

V_{OUT} , Reg-line, Reg-load, I_B , ΔI_B , V_D , T_{cvo}



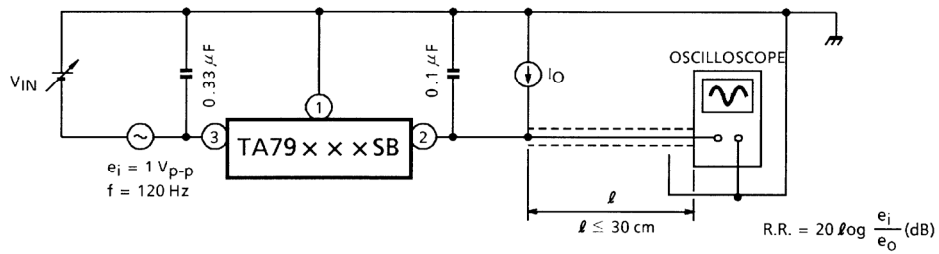
Test Circuit 2

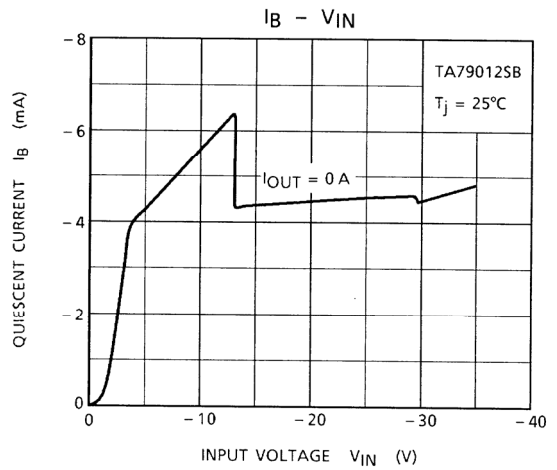
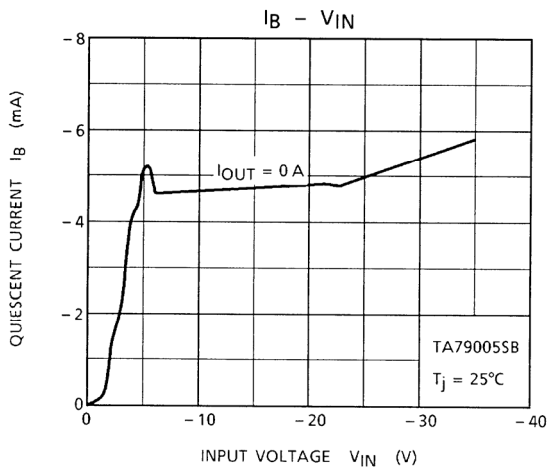
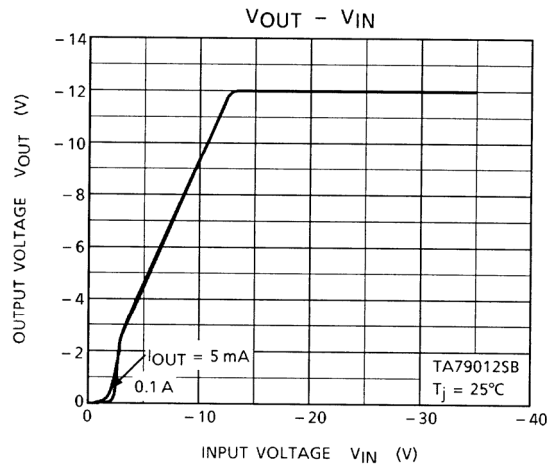
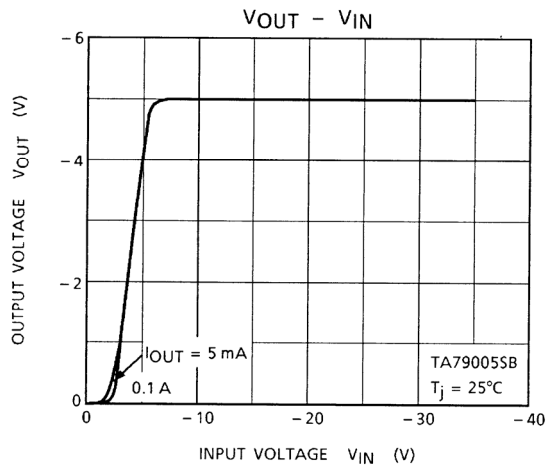
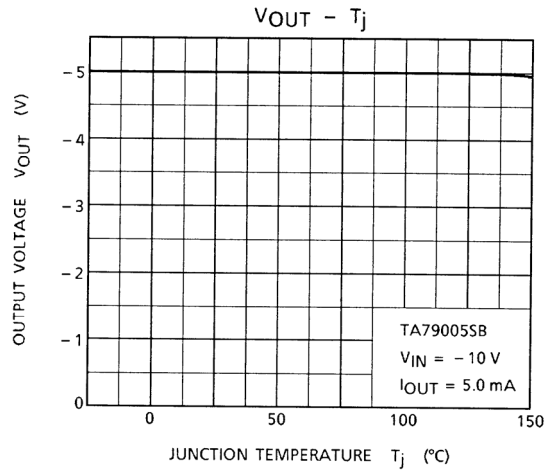
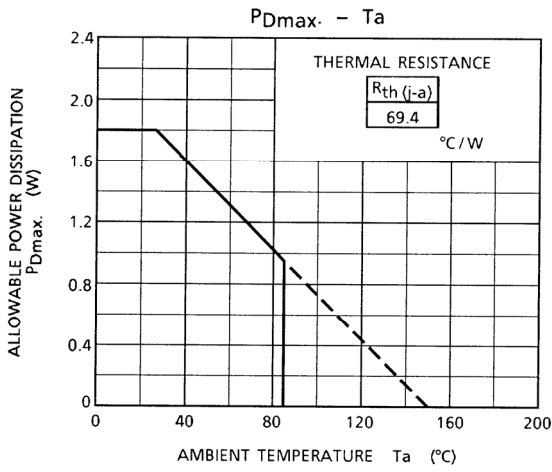
V_{NO}

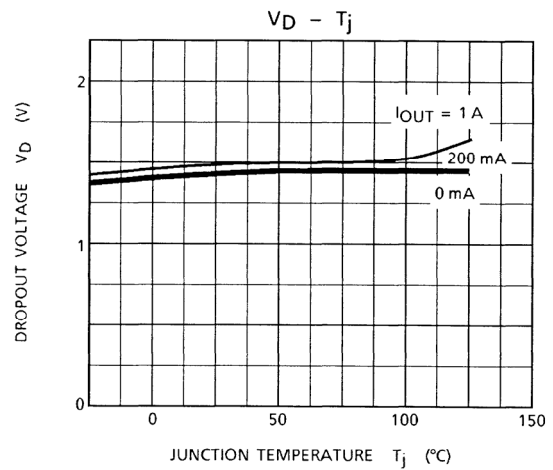
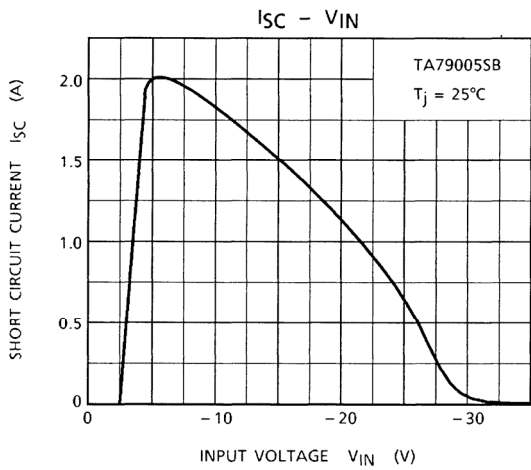
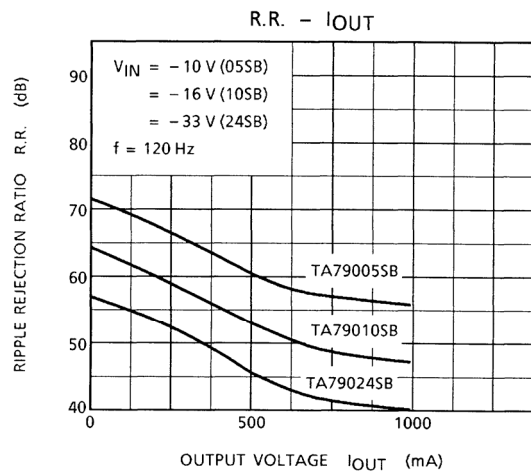
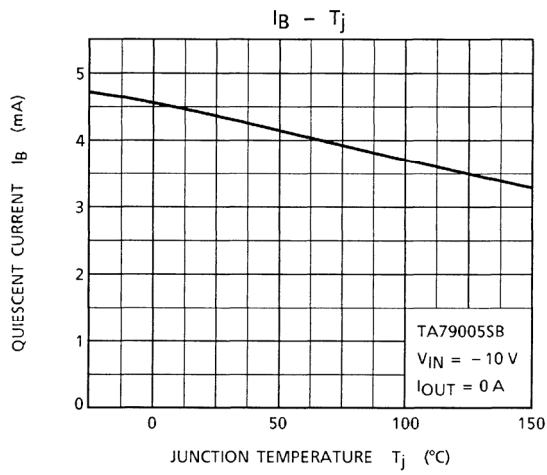


Test Circuit 3

R.R.



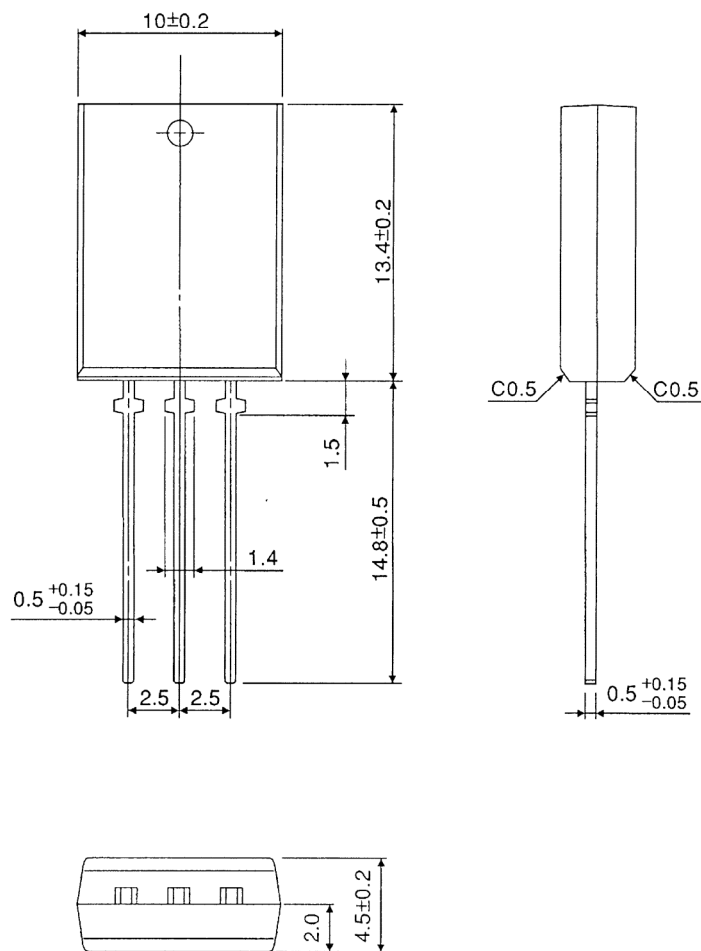




Package Dimensions

SIP3-P-2.50A

Unit : mm



Weight : 1.5 g (Typ.)

RESTRICTIONS ON PRODUCT USE

20070701-EN

- The information contained herein is subject to change without notice.
- TOSHIBA is continually working to improve the quality and reliability of its products. Nevertheless, semiconductor devices in general can malfunction or fail due to their inherent electrical sensitivity and vulnerability to physical stress. It is the responsibility of the buyer, when utilizing TOSHIBA products, to comply with the standards of safety in making a safe design for the entire system, and to avoid situations in which a malfunction or failure of such TOSHIBA products could cause loss of human life, bodily injury or damage to property.
In developing your designs, please ensure that TOSHIBA products are used within specified operating ranges as set forth in the most recent TOSHIBA products specifications. Also, please keep in mind the precautions and conditions set forth in the "Handling Guide for Semiconductor Devices," or "TOSHIBA Semiconductor Reliability Handbook" etc.
- The TOSHIBA products listed in this document are intended for usage in general electronics applications (computer, personal equipment, office equipment, measuring equipment, industrial robotics, domestic appliances, etc.). These TOSHIBA products are neither intended nor warranted for usage in equipment that requires extraordinarily high quality and/or reliability or a malfunction or failure of which may cause loss of human life or bodily injury ("Unintended Usage"). Unintended Usage include atomic energy control instruments, airplane or spaceship instruments, transportation instruments, traffic signal instruments, combustion control instruments, medical instruments, all types of safety devices, etc.. Unintended Usage of TOSHIBA products listed in this document shall be made at the customer's own risk.
- The products described in this document shall not be used or embedded to any downstream products of which manufacture, use and/or sale are prohibited under any applicable laws and regulations.
- The information contained herein is presented only as a guide for the applications of our products. No responsibility is assumed by TOSHIBA for any infringements of patents or other rights of the third parties which may result from its use. No license is granted by implication or otherwise under any patents or other rights of TOSHIBA or the third parties.
- Please contact your sales representative for product-by-product details in this document regarding RoHS compatibility. Please use these products in this document in compliance with all applicable laws and regulations that regulate the inclusion or use of controlled substances. Toshiba assumes no liability for damage or losses occurring as a result of noncompliance with applicable laws and regulations.