

BRIGHT LED ELECTRONICS CORP.

LED DIGIT DISPLAY SPECIFICATION

●COMMODITY : 0.36"(9.20mm) SIX DIGIT DISPLAY

●DEVICE NUMBER : BX-N321RD

VERSION: 1.0 /2001.08.28

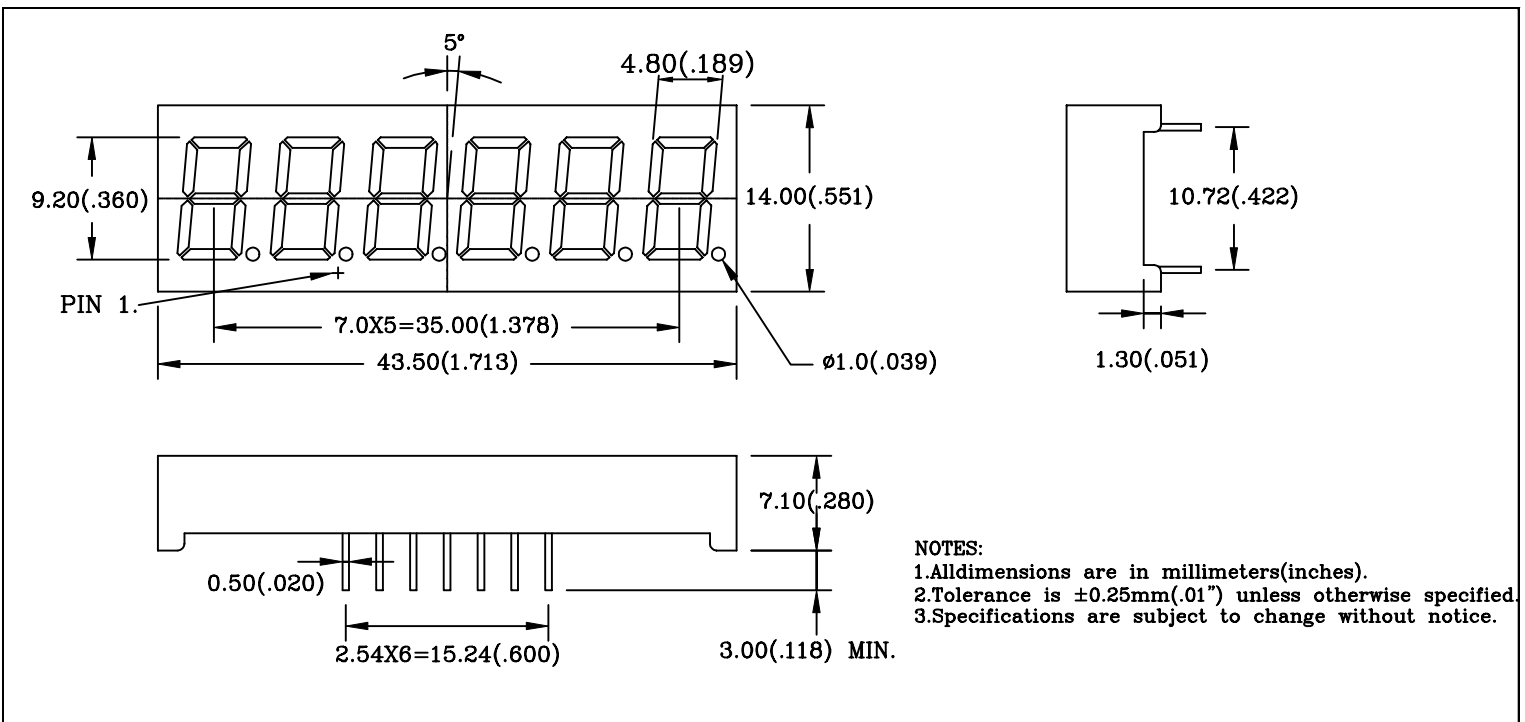
●ELECTRICAL AND OPTICAL CHARACTERISTICS (Ta=25°C)

Chip		Absolute Maximum Ratings				Electro-Optical Data (At 10mA)			Surface Color	Segment Color
Emitted Color	Peak Wave Length λ P(nm)	$\Delta \lambda$ (nm)	Pd (mW)	If (mA)	Pead If(mA)	Vf (V)	If (mA)	Iv Typ. (mcd)		
						Typ.	Typ.			
Red	655	40	80	40	200	1.7	2.0	0.6	Black	White

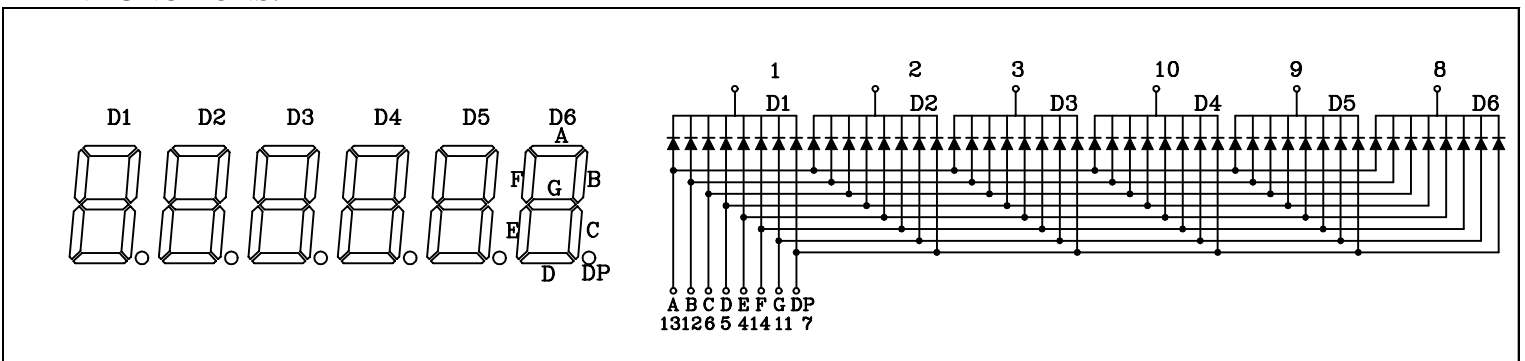
●ABSOLUTE MAXIMUN RATINGS (Ta=25°C)

Reverse Voltage 5V
 Reverse Current (-Vr=5V) 50 μ A
 Operating Temperature Range -40°C ~ 80°C
 Storage Temperature Range -40°C ~ 85°C
 Lead Soldering Temperature (1/16" From Body) 260°C For 5 Seconds

PACKAGE DIMMENSIONS:



PIN FUNCTIONS:



RELEASED: 2001.08.28

ENGINEER: 2001.08.28