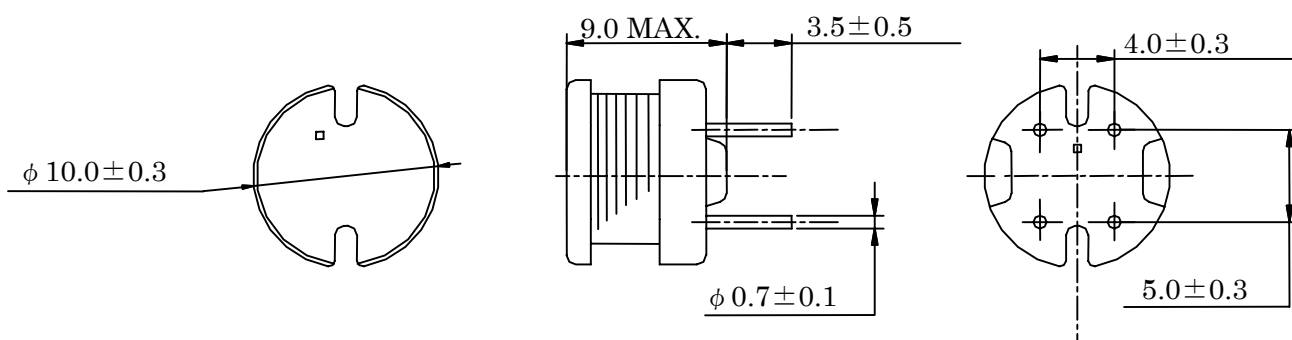
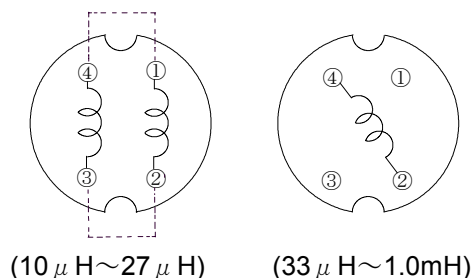


Type: RCH-109
◆ Product Description

- 10.3mm Max. ϕ , 9.0mm Max. Height.
- Inductance range: $10 \mu\text{H} \sim 1.0\text{mH}$
- Rated current range: $0.40 \sim 4.5\text{A}$
- In addition to the standard versions of inductors shown here, custom inductors are available to meet your exact requirements.


◆ Feature

- Magnetically unshielded construction.
- Ideally Used in Printers, LCD TV, DVD, Printer, Copy Machine, Mainboard of the compounding machines, etc as Power Supplies's Inductors or DC-DC Converter inductors.
- RoHS Compliance

◆ Dimensions (mm)

◆ Schematics (Bottom)


※ To be connected between #1 and #4, #2 and #3 ($10 \mu\text{H} \sim 27 \mu\text{H}$) when using.

※ It is no matter for the electric characteristics if terminal 1 is connected to terminal 4, terminal 2 is connected to terminal 3 with solder. (On the bottom of drum core) ($10 \mu\text{H} \sim 27 \mu\text{H}$).

Type: RCH-109
◆ Specification

Part Name	Stamp	Inductance [Within] (at 1kHz)	D.C.R. (Ω) Max.(Typ.) at 20°C	Saturation current (A)※1		Temperature Rise Current (A) ※2
				at 20°C	at 100°C	
RCH1Ø9NP-1ØØM	100	10 μ H ±20%	25m(19m)	4.50	3.40	4.50
RCH1Ø9NP-12ØM	120	12 μ H ±20%	29m(23m)	4.00	2.95	4.10
RCH1Ø9NP-15ØM	150	15 μ H ±20%	35m(28m)	3.65	2.55	3.75
RCH1Ø9NP-18ØM	180	18 μ H ±20%	43m(34m)	3.20	2.35	2.85
RCH1Ø9NP-22ØM	220	22 μ H ±20%	47m(37m)	3.05	2.00	2.70
RCH1Ø9NP-27ØM	270	27 μ H ±20%	54m(43m)	2.70	1.85	2.50
RCH1Ø9NP-33ØK	330	33 μ H ±10%	72m(57m)	2.45	1.70	2.40
RCH1Ø9NP-39ØK	390	39 μ H ±10%	78m(62m)	2.10	1.50	2.20
RCH1Ø9NP-47ØK	470	47 μ H ±10%	92m(74m)	2.00	1.40	2.05
RCH1Ø9NP-56ØK	560	56 μ H ±10%	116m(93m)	1.75	1.30	1.80
RCH1Ø9NP-68ØK	680	68 μ H ±10%	130m(104m)	1.65	1.25	1.60
RCH1Ø9NP-82ØK	820	82 μ H ±10%	150m(120m)	1.50	1.15	1.50
RCH1Ø9NP-1Ø1K	101	100 μ H ±10%	200m(160m)	1.35	1.00	1.40
RCH1Ø9NP-121K	121	120 μ H ±10%	225m(180m)	1.25	0.92	1.25
RCH1Ø9NP-151K	151	150 μ H ±10%	288m(230m)	1.10	0.82	1.05
RCH1Ø9NP-181K	181	180 μ H ±10%	0.34(0.27)	1.00	0.76	1.00
RCH1Ø9NP-221K	221	220 μ H ±10%	0.42(0.33)	0.94	0.70	0.92
RCH1Ø9NP-271K	271	270 μ H ±10%	0.57(0.45)	0.85	0.65	0.77
RCH1Ø9NP-331K	331	330 μ H ±10%	0.65(0.52)	0.77	0.60	0.67
RCH1Ø9NP-391K	391	390 μ H ±10%	0.73(0.58)	0.71	0.51	0.63
RCH1Ø9NP-471K	471	470 μ H ±10%	0.95(0.76)	0.65	0.45	0.59
RCH1Ø9NP-561K	561	560 μ H ±10%	1.08(0.86)	0.60	0.40	0.52
RCH1Ø9NP-681K	681	680 μ H ±10%	1.24(0.99)	0.54	0.38	0.50
RCH1Ø9NP-821K	821	820 μ H ±10%	1.59(1.32)	0.48	0.36	0.42
RCH1Ø9NP-1Ø2K	102	1.0mH ±10%	1.84(1.53)	0.44	0.34	0.40

※1: Saturation current: The DC current at which the inductance decreases to 90% of it's initial value.

※2: Temperature rise current: The DC current at which the temperature rise is $\Delta t=40^{\circ}\text{C}$. ($T_a=20^{\circ}\text{C}$).