

6-WAY POWER DIVIDER

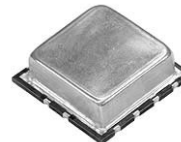
SURFACE MOUNT MODEL: DFS-905

FREQUENCY

1 - 500 MHz

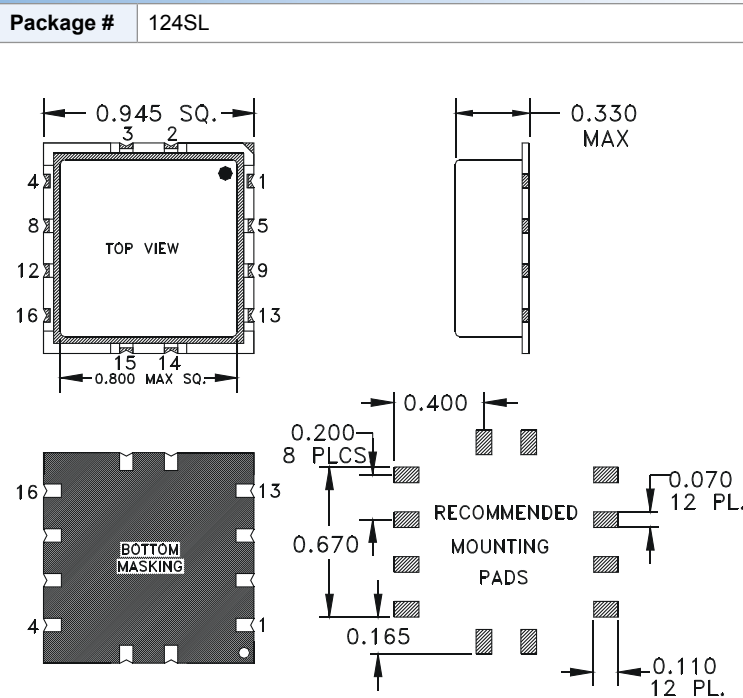
FEATURES:

- ▶ Wide Bandwidth
- ▶ Low Loss
- ▶ Closely Controlled Phase/Amplitude Unbalance



SPECIFICATIONS (Rev. B 01/16/07)

Frequency	1 - 500 MHz		
Insertion Loss (dB)	Freq. (MHz)	Typ.	Max.
	1 - 10	0.3	0.6
	10 - 250	0.7	1.2
	250 - 500	1.2	1.8
Isolation (dB)	Freq. (MHz)	Typ.	Min.
	1 - 10	30	25
	10 - 250	28	23
	250 - 500	20	15
Phase Unbalance (Deg.)	Freq. (MHz)	Max.	
	1 - 10	2°	
	10 - 250	4°	
	250 - 500	8°	
Amplitude Unbalance (dB)	Freq. (MHz)	Max.	
	1 - 10	0.2	
	10 - 250	0.4	
	250 - 500	0.6	
VSWR	1.2:1 (Typ.)		
Output Impedance	50 Ohms (Nom.)		
Input Power	1 Watt (Max.)		
Operating Temperature Range	-40 to +85° C		
<i>* In excess of the 7.78 dB theoretical split loss.</i>			



PORT DESIGNATION			
Input	Output	Gnd.	No Connection
1	3,4,8,12,15,16	2,5,9,13,14	6,7,10,11



6-WAY POWER DIVIDER

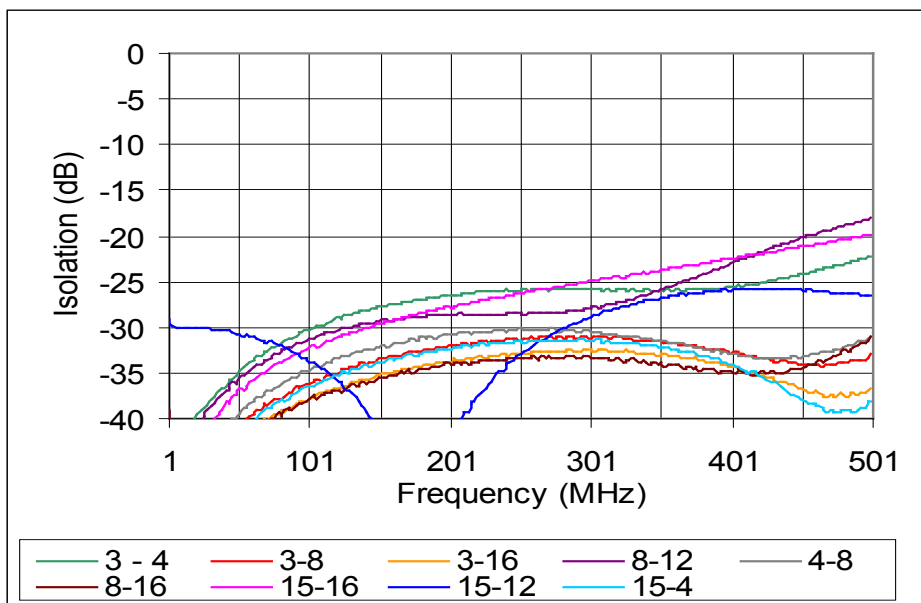
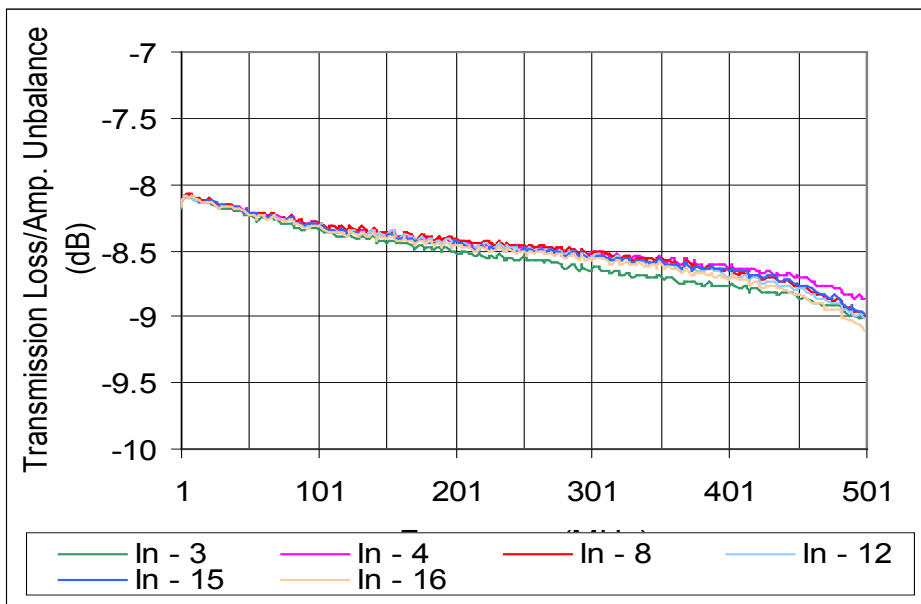
SURFACE MOUNT MODEL: DFS-905

FREQUENCY

1 - 500 MHz

Data @ 25°C

PERFORMANCE PLOTS



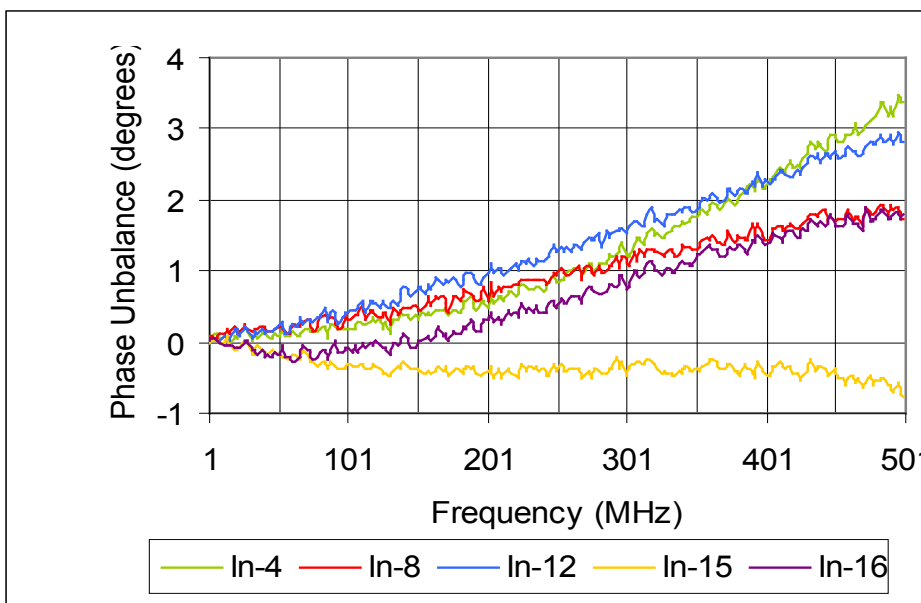
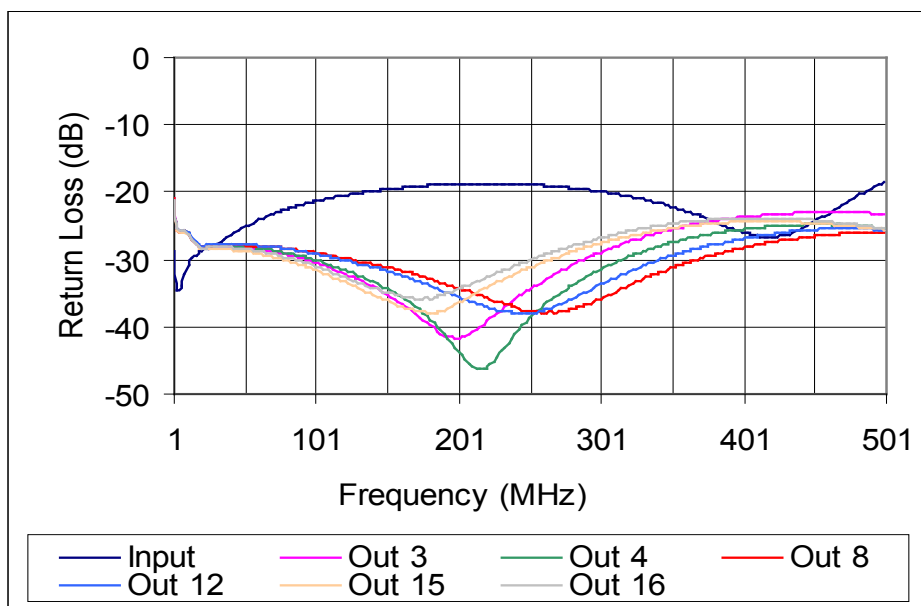
6-WAY POWER DIVIDER

SURFACE MOUNT MODEL: DFS-905

FREQUENCY

1 - 500 MHz

Data @ 25°C



PERFORMANCE PLOTS

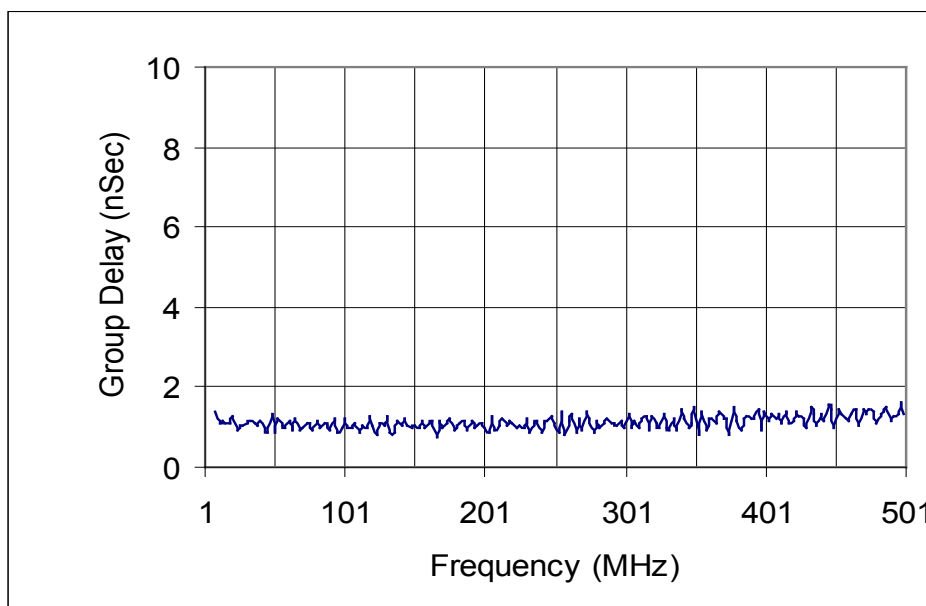
6-WAY POWER DIVIDER

SURFACE MOUNT MODEL: DFS-905

FREQUENCY

1 - 500 MHz

Data @ 25°C



PERFORMANCE PLOTS