

# QUADRATURE HYBRID MODEL SLQ-K04

OCTAVE BANDWIDTH

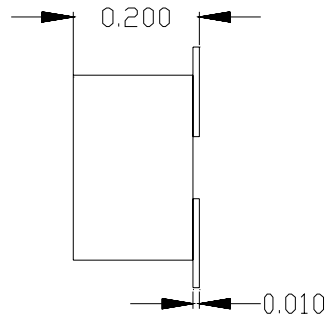
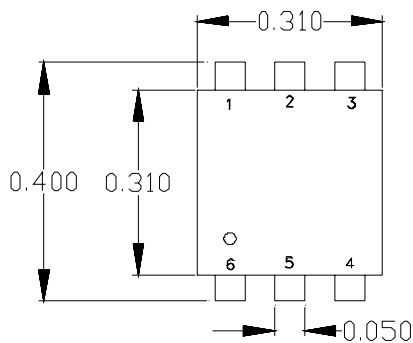
100 - 200 MHz

## SPECIFICATIONS

<b>Operating Frequency:</b>	100 - 200 MHz	<b>Phase Unbalance:</b>	1° (Typ) / 3° (Max)
<b>Insertion Loss:</b>	0.4 dB (Typ) / 0.75 dB (Max)	<b>VSWR :</b>	1.2:1 (Max)
<b>Isolation:</b>	25 dB (Typ) / 18 dB (Min)	<b>Power Rating:</b>	1 Watt (Max)
<b>Amplitude Unbalance:</b>	0.5 dB (Typ) / 1 dB (Max)	<b>Impedance:</b>	50 Ohms (Nom)
		<b>Operating Temp. Range:</b>	-20° to +70°C

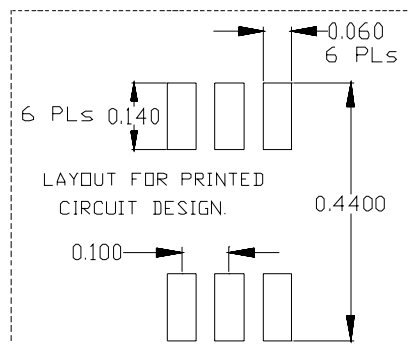
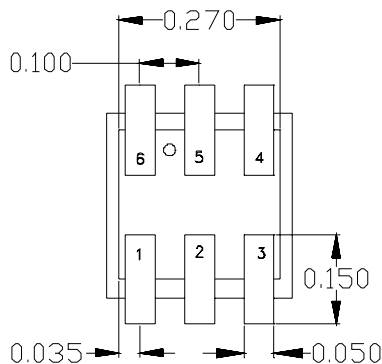


MECHANICAL OUTLINE: 159



PIN-OUT	
Input	6
+90° Output	1
0° Output	2
Isolated*	5
Ground**	3,4

\* Terminate Isolated port  
with 50 Ohms  
\* Ground Externally



# QUADRATURE HYBRID MODEL SLQ-K04

OCTAVE BANDWIDTH

100 - 200 MHz

## PERFORMANCE PLOTS

