

Features

- Frequency Range 50 – 1000 MHz
- Low Cost
- Industry Standard SMT package
- Available in Tape-and -Reel
- 75 Ohms Characteristic Impedance

Description

The SPA-1001-27 is a 0° In-phase two way power splitter designed for applications that require small, low cost and highly reliable surface mount components. Applications may be found in broadband, wireless and other communications systems. S-Parameters are available on request.

SURFACE MOUNT 2-WAY SPLITTER



Specifications

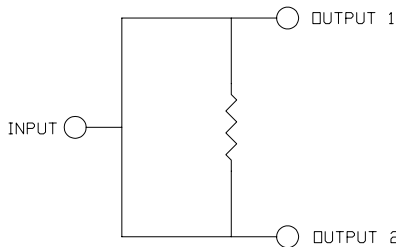
| Parameter | Minimum | Typical | Maximum |
|-------------------------|---------|---------|---------|
| Frequency Range (MHz) | 50 | | 1000 |
| Insertion Loss (dB) | | 0.5 | 1.0 |
| Isolation (dB) | 18 | 22 | |
| Return Loss (dB) | | 20 | 17.7 |
| Amplitude Balance (dB) | | 0.2 | 0.4 |
| Phase Balance (Degrees) | | 1.0 | 3.0 |

Absolute Maximum Ratings

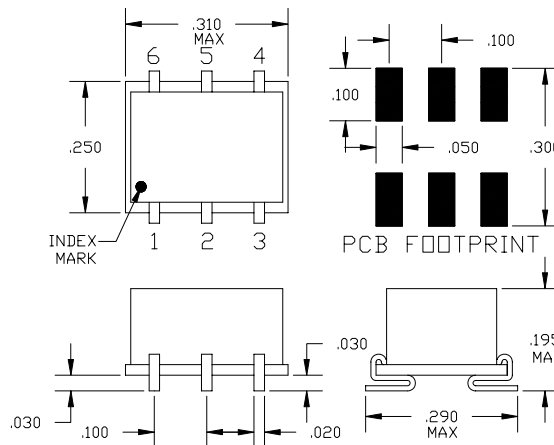
| Parameter | Maximum |
|-----------------------|----------------|
| RF Power | +33 dBm |
| Operating Temperature | -55 to +100 °C |
| Storage Temperature | -55 to +100 °C |
| Re-flow Temperature | + 240 °C |

Note: Typical values represent Mid-band performance @ 25°.

Schematic



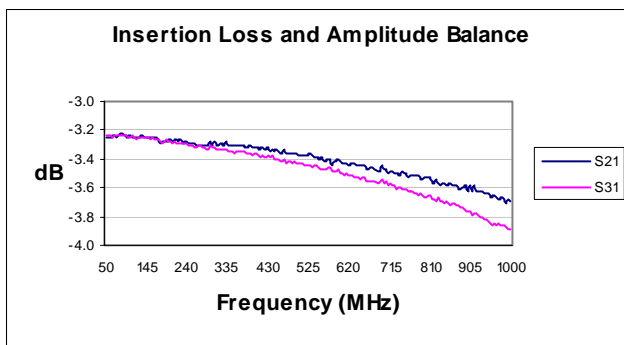
Package – S06



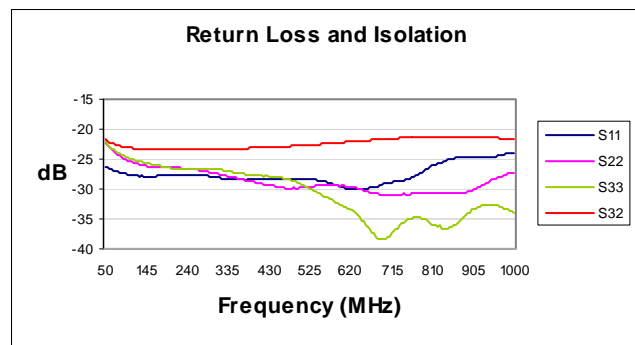
Pin Functions

| Function | Pin |
|----------|-------|
| INPUT | 1 |
| OUTPUT 1 | 3 |
| OUTPUT 2 | 4 |
| GROUND | 2,5,6 |

Typical Test Data – Insertion Loss and Amplitude Balance



Typical Test Data – Return Loss and Output Isolation



Specifications and information on this data sheet are subject to change without notice..