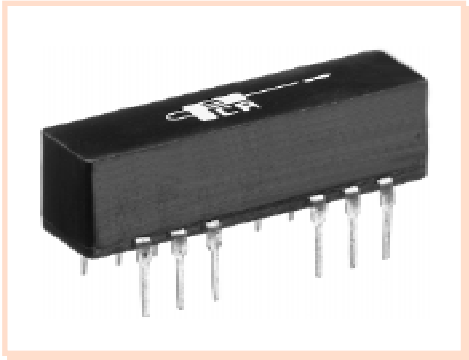


10 Base-T Transceiver Module

EPE6087A

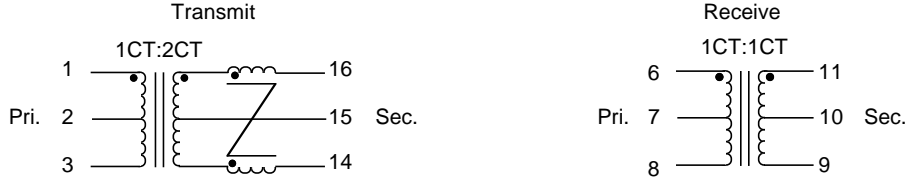


- For use with National Semiconductor's DP83907 Atlantic II Chip •
- Also recommended for use with Level One LXT905 Chip •
- Robust design allows for toughest soldering processes •
- Provided with superior common mode attenuation •
- Complies with or exceeds IEEE Requirements •

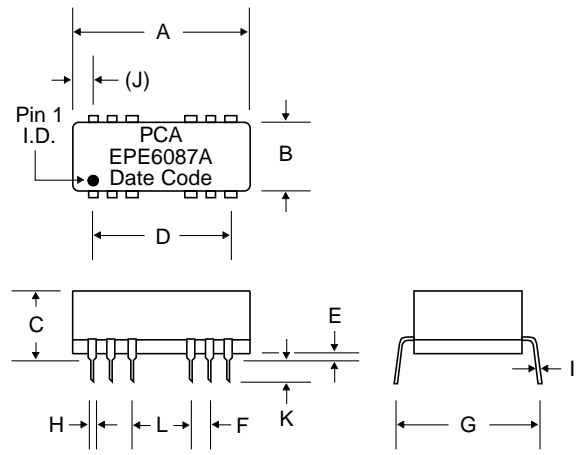
Electrical Parameters @ 25° C

Primary Inductance (μH Min.)		Interwinding Capacitance (pF Max.)	Leakage Inductance (μH Max.)	CMRR (dB Min.) (Xmit)				Return Loss (dB Min.)	Hipot (Vrms)	Primary DCR (Ω Max.)	
@ 1 MHz, 0.1 Vrms		@ 1 MHz, 0.1 Vrms	@ 1 MHz, 0.1 Vrms	10 MHz	50 MHz	100 MHz	200 MHz	5MHz-10MHz		Xmit	Rcv
Xmit	Rcv										
50	200	12	0.3	-50	-35	-30	-20	-15	1500	0.35	0.50

Schematic



Package



Dimensions

Dim.	(Inches)			(Millimeters)		
	Min.	Max.	Nom.	Min.	Max.	Nom.
A	.780	.800		19.81	20.32	
B	.260	.280		6.60	7.11	
C	.180	.200		4.57	5.08	
D	.700	Typ.		17.78	Typ.	
E	.020	.030		.508	.762	
F	.100	Typ.		2.54	Typ.	
G	.310	.365		7.87	9.27	
H	.018	.022		.457	.559	
I	.008	.012		.203	.305	
(J)	.045	Typ.		1.14	Typ	
K	.120	.140		3.05	3.56	
L	.300	Typ.		7.62	Typ.	