

RF IMPEDANCE TRANSFORMER

SURFACE MOUNT MODEL: TM4-1

WIDE BANDWIDTH

10 - 1000 MHz

FEATURES:

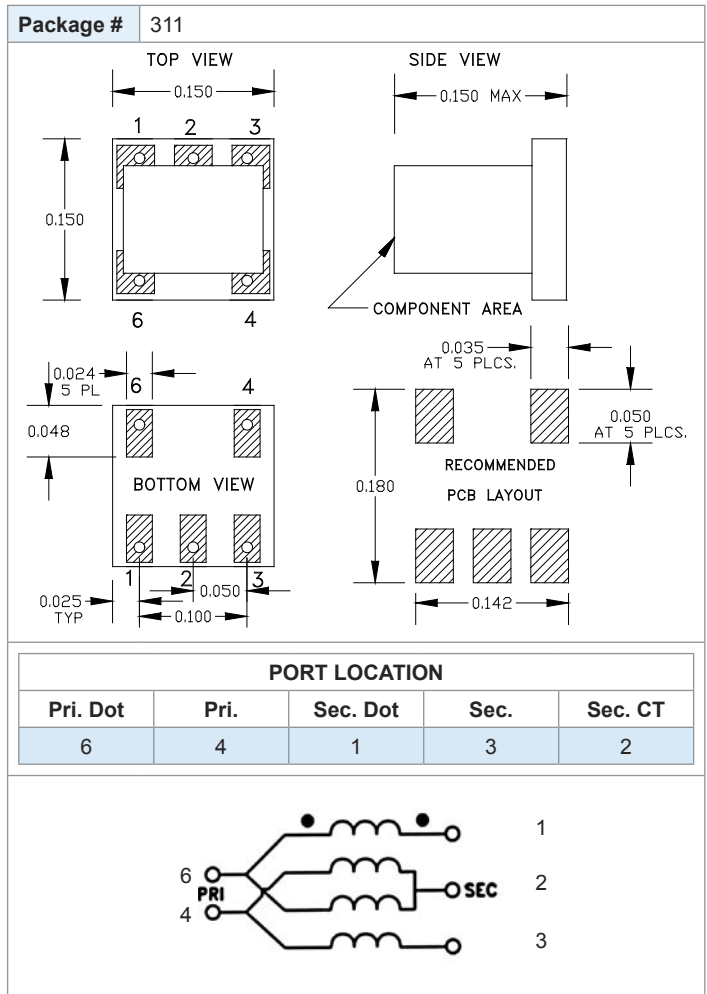
- ▶ Cost Effective
- ▶ Low Loss
- ▶ Small Size, Surface Mount
- ▶ RoHS Compliant
- ▶ Lead Free REL-PRO® Technology



Part Identifier:
Red & Yellow Dot

SPECIFICATIONS (Rev. F 06/19/07)

| | | | |
|---------------------------------|-----------------|------|------|
| Frequency | 10 - 1000 MHz | | |
| Impedance Ratio | 1:4 | | |
| Insertion Loss (dB) * | Frequency (MHz) | Typ. | Max. |
| | 10 - 100 | 1.8 | 2.7 |
| | 100 - 500 | 1.9 | 2.5 |
| | 500 - 1000 | 2.0 | 2.6 |
| Amplitude Unbalance | 0.4 dB (Typ.) | | |
| Phase Unbalance | ±4° (Typ.) | | |
| Return Loss | 14 dB (Typ.) | | |
| Input Power | 0.5 Watt (Max.) | | |
| DC Current | 30 mA (Max.) | | |
| Input Impedance | 50 Ohms (Nom.) | | |
| Operating Temperature Range | -40 to +85 °C | | |
| Storage Temperature Range | -55 to +100 °C | | |
| * Plot excludes 3 dB Split Loss | | | |



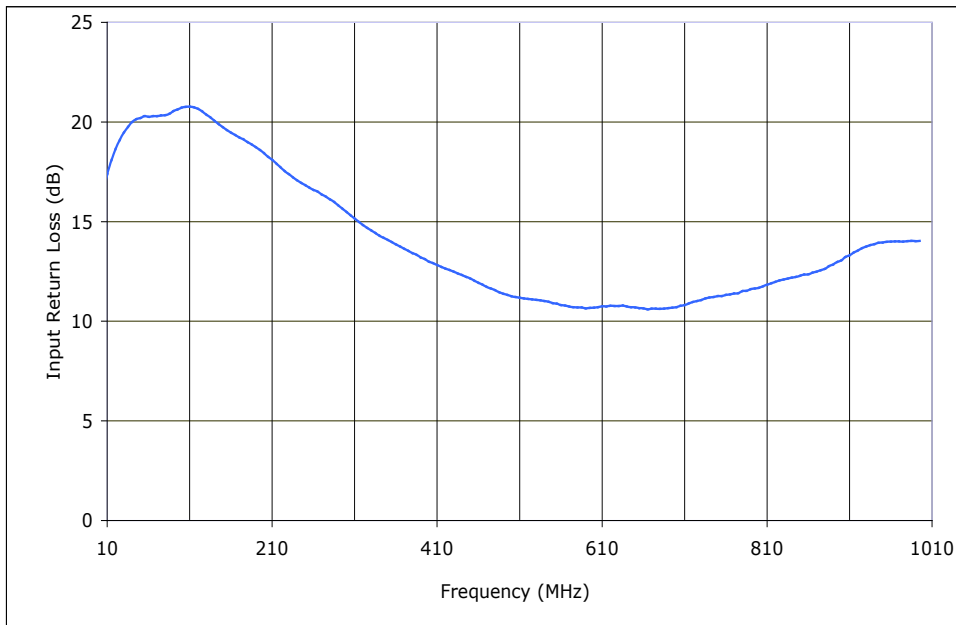
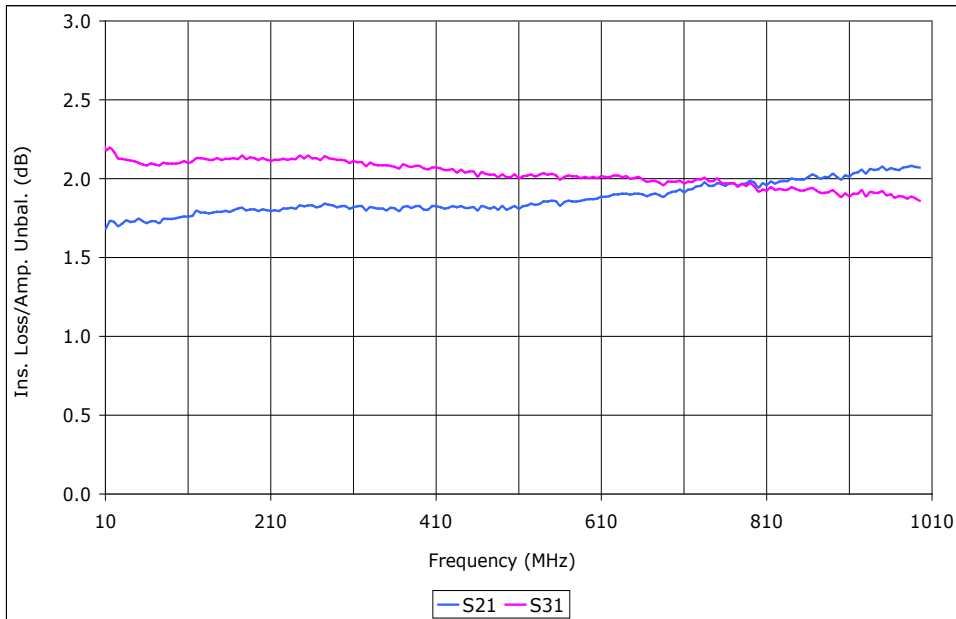
RF IMPEDANCE TRANSFORMER

SURFACE MOUNT MODEL: TM4-1

WIDE BANDWIDTH

10 - 1000 MHz

Data @ 25°C



PERFORMANCE PLOTS

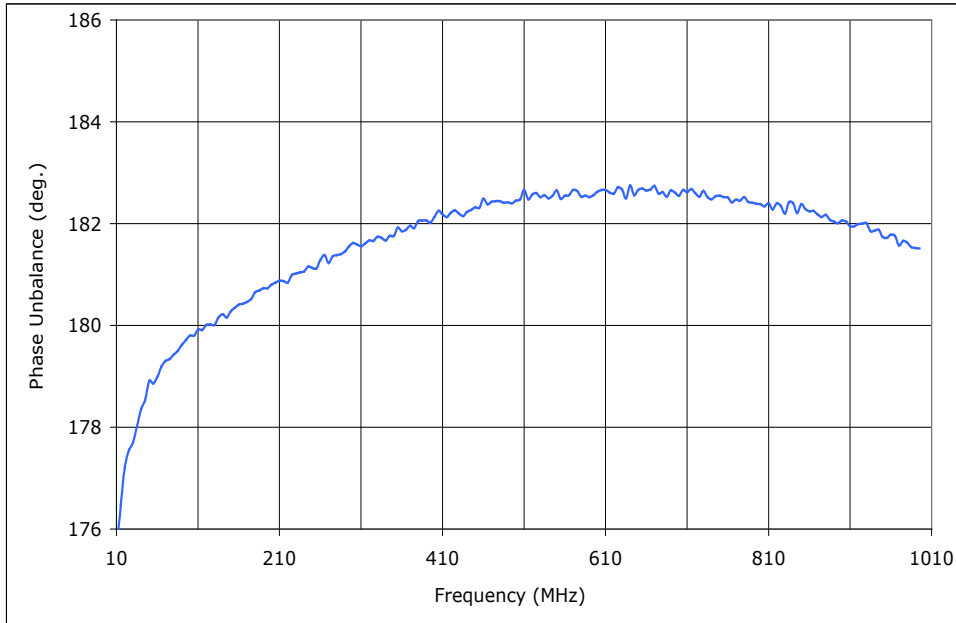


RF IMPEDANCE TRANSFORMER SURFACE MOUNT MODEL: TM4-1

WIDE BANDWIDTH

10 - 1000 MHz

Data @ 25°C



PERFORMANCE PLOTS



Copyright © 2006 Synergy Microwave Corporation

201 McLean Boulevard • Paterson, New Jersey 07504 • Tel: (973) 881-8800 • Fax: (973) 881-8361

E-Mail: sales@synergymwave.com • World Wide Web: <http://www.synergymwave.com>