

Features

- Single axis acceleration measurements (low-frequency vibrations and movements).
- Wide acceleration range.
- Excellent EMI/RFI immunity.
- Rugged epoxy-filled enclosure, small size.
- Watertight mini sure-seal[®] connector.

Description

The SENACC measures vibrations up to 150Hz with a recorder that is setup accordingly. It may also measure longitudinal, lateral or vertical acceleration of the body or the moving parts of a vehicle.

When its sensing axis is oriented to gravity the SENACC experiences an acceleration of +1.0 g.

Specifications

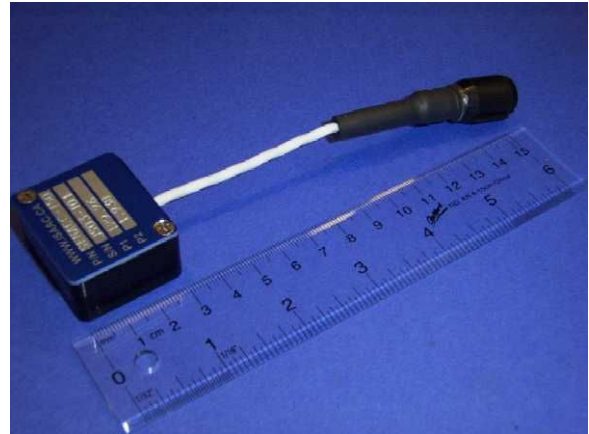
- Available ranges:

Sensor	Range
SENACC-010	± 1.0G
SENACC-030	± 3.3G
SENACC-050	± 5.0G
SENACC-011	± 10.0G
SENACC-250	± 25.0G
SENACC-051	± 50.0G

- Operating temperature: -40°C to 85°C.
- Power supply: 5 mA, 11-24Vdc.
- Dimensions: 33mm x 38mm.
- Weight: 56 grams (1.975 oz.)

Installation

- Align the sensor's sensitivity axis with the measuring direction.
- Use the #4-40 screw-holes to fasten the sensor rigidly to the moving body.
- Connect the sensor to an analog input of the system: A, B or C.
- Carefully align indexing rib when mating mini sure-seal[®] connectors.



- Do not expose wire/connector to water, oil or fuel.
- Route the sensor cable away from sources of interference, such as ignition coils, plug leads, electronic modules or antennas.
- Verify that the cable is not pinched or stretched by moving parts.
- Do not bend cable with curvature radius smaller than 1.60" [40 mm].

Calibration

Refer to the nameplate on each sensor for individual calibration parameters.

Name	SENACC-010		
Predefined Equation	Acceleration		
Units	g or m/s ²		
P1	See nameplate	P2	See nameplate

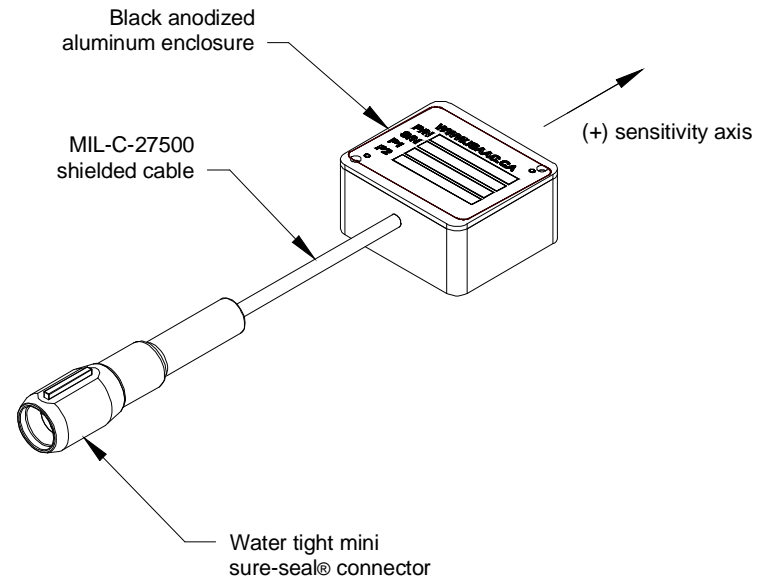
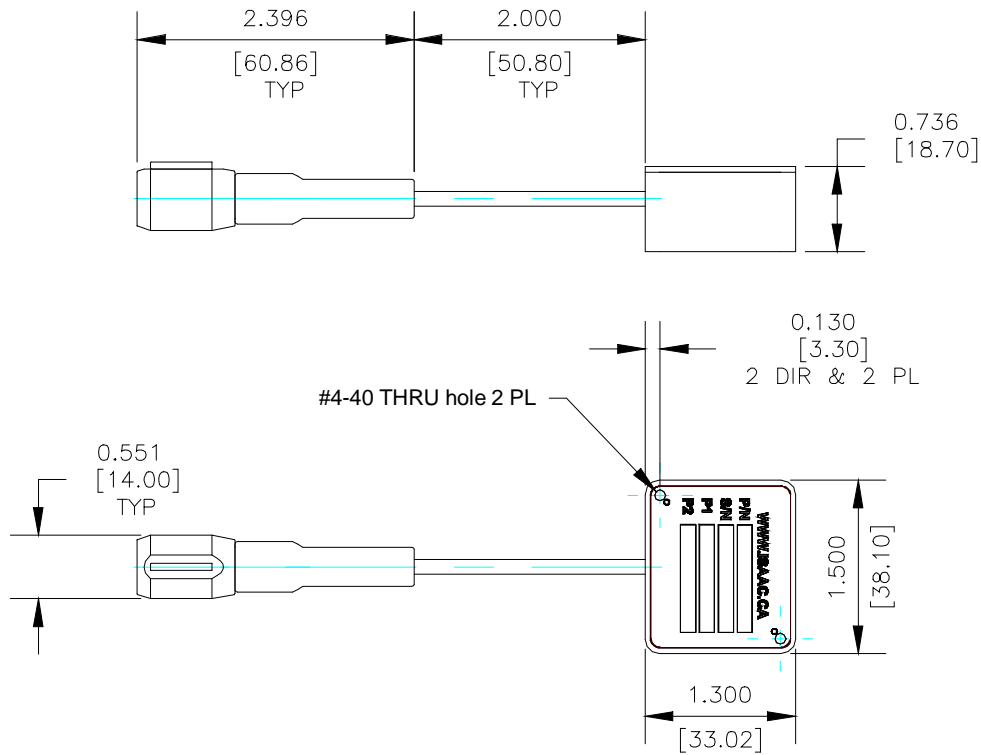
Name	SENACC-030		
Predefined Equation	Acceleration		
Units	g or m/s ²		
P1	See nameplate	P2	See nameplate

Name	SENACC-050		
Predefined Equation	Acceleration		
Units	g or m/s ²		
P1	See nameplate	P2	See nameplate

Name	SENACC-011		
Predefined Equation	Acceleration		
Units	g or m/s ²		
P1	See nameplate	P2	See nameplate

Name	SENACC-250		
Predefined Equation	Acceleration		
Units	g or m/s ²		
P1	See nameplate	P2	See nameplate

Name	SENACC-051		
Predefined Equation	Acceleration		
Units	g or m/s ²		
P1	See nameplate	P2	See nameplate



All dimensions are in inches [millimeters].