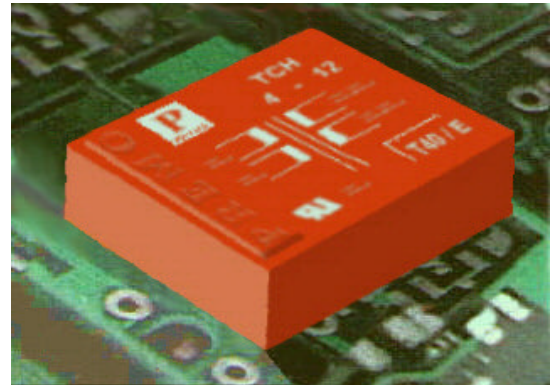


## TCH - TNC Series

- VDE and UL Approvals
- 110V X 2 Universal Primary
- Dual 115V Primary Option
- Up to 42VA Power Rating
- Low Leakage Current
- High Reliability



These low profile transformers have high dielectric strength and very low leakage current. The core is laminated using UI type grain orientated magnetic plates.

### OUTLINE AND DIMENSIONS

Fig. 1

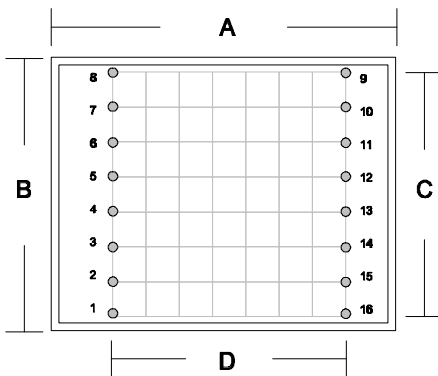


Fig. 2

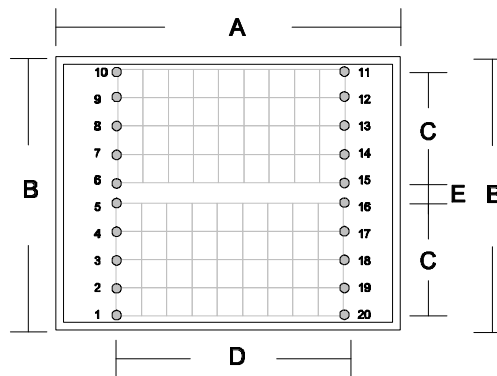
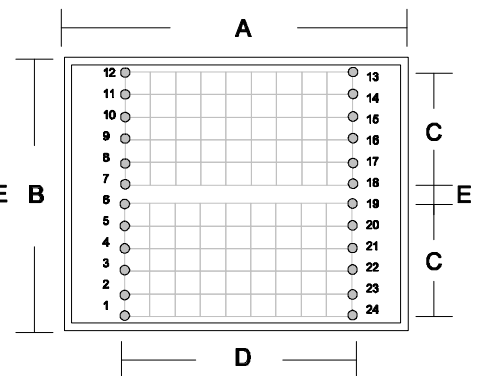


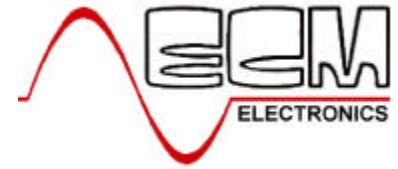
Fig. 3



H = TOTAL HEIGHT EXCLUDING PINS

Package	Outline (Fig.)	A (mm)	B	C	D	E	H	Pin Dia.
TCH - A	1	53.0	44.0	7x5.0	35.0	-	19	0.8
TCH - B	1	53.0	44.0	7x5.0	35.0	-	22	0.8
TCH - C	2	68.0	57.5	4x5.0	45.0	6.0	22	0.8
TCH - D	2	68.0	57.5	4x5.0	45.0	6.0	27	0.8
TNC - F	2	73.5	54.0	4x5.0	45.0	5.0	26	0.8
TNC - G	2	73.5	54.0	4x5.0	45.0	5.0	35	0.8
TNC - H	3	89.0	69.0	5x5.0	52.0	7.5	37	0.8

# ECM Flat Mains Transformer

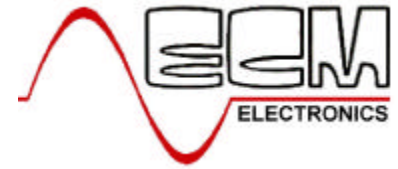


<b>ECM Part</b>	<b>VA</b>	<b>Primary 2 X 110V Between Pins-</b>	<b>Secondary Output 2 X</b>	<b>Secondary Connection Between Pins-</b>	<b>Weight (kgs)</b>
TCH-A 2-6	2	1-3 / 6-8	6V - 0.166A	9-10 / 15-16	0.15
TCH-A 2-9	2	1-3 / 6-8	9V - 0.111A	9-10 / 15-16	0.15
TCH-A 2-12	2	1-3 / 6-8	12V - 0.083A	9-10 / 15-16	0.15
TCH-A 2-15	2	1-3 / 6-8	15V - 0.066A	9-10 / 15-16	0.15
TCH-A 2-18	2	1-3 / 6-8	18V - 0.055A	9-10 / 15-16	0.15
TCH-A 2-24	2	1-3 / 6-8	24V - 0.041A	9-10 / 15-16	0.15
TCH-A 4-6	4	1-3 / 6-8	6V - 0.333A	9-10 / 15-16	0.15
TCH-A 4-9	4	1-3 / 6-8	9V - 0.222A	9-10 / 15-16	0.15
TCH-A 4-12	4	1-3 / 6-8	12V - 0.166A	9-10 / 15-16	0.15
TCH-A 4-15	4	1-3 / 6-8	15V - 0.133A	9-10 / 15-16	0.15
TCH-A 4-18	4	1-3 / 6-8	18V - 0.111A	9-10 / 15-16	0.15
TCH-A 4-24	4	1-3 / 6-8	24V - 0.083A	9-10 / 15-16	0.15
TCH-B 6-6	6	1-3 / 6-8	6V - 0.500A	9-10 / 15-16	0.15
TCH-B 6-9	6	1-3 / 6-8	9V - 0.333A	9-10 / 15-16	0.15
TCH-B 6-12	6	1-3 / 6-8	12V - 0.250A	9-10 / 15-16	0.15
TCH-B 6-15	6	1-3 / 6-8	15V - 0.200A	9-10 / 15-16	0.15
TCH-B 6-18	6	1-3 / 6-8	18V - 0.166A	9-10 / 15-16	0.15
TCH-B 6-24	6	1-3 / 6-8	24V - 0.125A	9-10 / 15-16	0.15
TCH-C 7-6	7	2-4 / 7-9	6V - 0.583A	11-12 / 19-20	0.28
TCH-C 7-9	7	2-4 / 7-9	9V - 0.388A	11-12 / 19-20	0.28
TCH-C 7-12	7	2-4 / 7-9	12V - 0.291A	11-12 / 19-20	0.28
TCH-C 7-15	7	2-4 / 7-9	15V - 0.233A	11-12 / 19-20	0.28
TCH-C 7-18	7	2-4 / 7-9	18V - 0.194A	11-12 / 19-20	0.28
TCH-C 7-24	7	2-4 / 7-9	24V - 0.145A	11-12 / 19-20	0.28
TCH-C 10-6	10	2-4 / 7-9	6V - 0.833A	11-12 / 19-20	0.28
TCH-C 10-9	10	2-4 / 7-9	9V - 0.555A	11-12 / 19-20	0.28
TCH-C 10-12	10	2-4 / 7-9	12V - 0.416A	11-12 / 19-20	0.28
TCH-C 10-15	10	2-4 / 7-9	15V - 0.333A	11-12 / 19-20	0.28
TCH-C 10-18	10	2-4 / 7-9	18V - 0.277A	11-12 / 19-20	0.28
TCH-C 10-24	10	2-4 / 7-9	24V - 0.208A	11-12 / 19-20	0.28
TCH-D 14-6	14	2-4 / 7-9	6V - 1.166A	11-12 / 19-20	0.41
TCH-D 14-9	14	2-4 / 7-9	9V - 0.777A	11-12 / 19-20	0.41
TCH-D 14-12	14	2-4 / 7-9	12V - 0.583A	11-12 / 19-20	0.41
TCH-D 14-15	14	2-4 / 7-9	15V - 0.466A	11-12 / 19-20	0.41
TCH-D 14-18	14	2-4 / 7-9	18V - 0.388A	11-12 / 19-20	0.41
TCH-D 14-24	14	2-4 / 7-9	24V - 0.291A	11-12 / 19-20	0.41
TNC-F 15-6	15	2-4 / 7-9	6V - 1.250A	11-12 / 19-20	0.32
TNC-F 15-9	15	2-4 / 7-9	9V - 0.833A	11-12 / 19-20	0.32
TNC-F 15-12	15	2-4 / 7-9	12V - 0.625A	11-12 / 19-20	0.32
TNC-F 15-15	15	2-4 / 7-9	15V - 0.500A	11-12 / 19-20	0.32
TNC-F 15-18	15	2-4 / 7-9	18V - 0.416A	11-12 / 19-20	0.32
TNC-F 15-24	15	2-4 / 7-9	24V - 0.312A	11-12 / 19-20	0.32

ECM Electronics Limited, Penmaen House, Ashington, West Sussex, RH20 3JR, UK  
 Tel: +44(0)1903 892810: Fax: +44(0)1903 892738. Email: [ecm@ecmelectronics.co.uk](mailto:ecm@ecmelectronics.co.uk)

Although we have attempted to accurately reflect the products we market. ECM reserve the right without prior notice to discontinue any product or make design changes we believe necessary.

# ECM Flat Mains Transformer



<b>ECM Part</b>	<b>VA</b>	<b>Primary 2 X 110V Between Pins-</b>	<b>Secondary Output 2 X</b>	<b>Secondary Connection Between Pins</b>	<b>Weight (kgs)</b>
TCH-D 18-6	18	2-4 / 7-9	6V - 1.500A	11-12 / 19-20	0.41
TCH-D 18-9	18	2-4 / 7-9	9V - 1.000A	11-12 / 19-20	0.41
TCH-D 18-12	18	2-4 / 7-9	12V - 0.750A	11-12 / 19-20	0.41
TCH-D 18-15	18	2-4 / 7-9	15V - 0.600A	11-12 / 19-20	0.41
TCH-D 18-18	18	2-4 / 7-9	18V - 0.500A	11-12 / 19-20	0.41
TCH-D 18-24	18	2-4 / 7-9	24V - 0.375A	11-12 / 19-20	0.41
TNC-G 25-6	25	2-4 / 7-9	6V - 2.080A	11-12 / 19-20	0.50
TNC-G 25-9	25	2-4 / 7-9	9V - 1.380A	11-12 / 19-20	0.50
TNC-G 25-12	25	2-4 / 7-9	12V - 1.040A	11-12 / 19-20	0.50
TNC-G 25-15	25	2-4 / 7-9	15V - 0.830A	11-12 / 19-20	0.50
TNC-G 25-18	25	2-4 / 7-9	18V - 0.694A	11-12 / 19-20	0.50
TNC-G 25-24	25	2-4 / 7-9	24V - 0.520A	11-12 / 19-20	0.50
TNC-H 42-6	42	2-5 / 8-11	6V - 3.500A	13-15 / 22-24	0.80
TNC-H 42-9	42	2-5 / 8-11	9V - 2.333A	13-15 / 22-24	0.80
TNC-H 42-12	42	2-5 / 8-11	12V - 1.750A	13-15 / 22-24	0.80
TNC-H 42-15	42	2-5 / 8-11	15V - 1.400A	13-15 / 22-24	0.80
TNC-H 42-18	42	2-5 / 8-11	18V - 1.166A	13-15 / 22-24	0.80

**Customer specifications also welcome**

ECM Electronics Limited, Penmaen House, Ashington, West Sussex, RH20 3JR, UK  
Tel: +44(0)1903 892810: Fax: +44(0)1903 892738. Email: [ecm@ecmelectronics.co.uk](mailto:ecm@ecmelectronics.co.uk)

Although we have attempted to accurately reflect the products we market. ECM reserve the right without prior notice to discontinue any product or make design changes we believe necessary.