

HIGH EFFICIENCY RECTIFIER

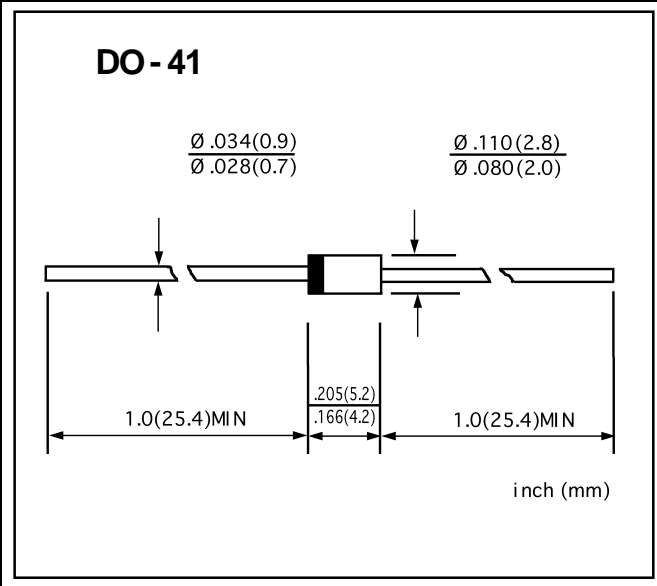
VOLTAGE RANGE: 70— 600 V
CURRENT: 1.1—0.6 A

FEATURES

- ◇ Low cost
- ◇ Diffused junction
- ◇ Low leakage
- ◇ Low forward voltage drop
- ◇ High current capability
- ◇ Easily cleaned with freon, alcohol, Isopropand and similar solvents

MECHANICAL DATA

- ◇ Case: JEDEC DO-41, molded plastic
- ◇ Terminals: Axial leads, solderable per MIL-STD-202, Method 208
- ◇ Polarity: Color band denotes cathode
- ◇ Weight: 0.012 ounces, 0.34 grams
- ◇ Mounting: Any



MAXIMUM RATINGS AND ELECTRICAL CHARACTERISTICS

Ratings at 25°C ambient temperature unless otherwise specified.

Single phase, half wave, 60 Hz, resistive or inductive load. For capacitive load, derate by 20%.

		EG1Y	EG1Z	EG1	EG1A	UNITS
Maximum peak repetitive reverse voltage	V_{RRM}	70	200	400	600	V
Maximum RMS voltage	V_{RMS}	49	140	280	420	V
Maximum DC blocking voltage	V_{DC}	70	200	400	600	V
Maximum average forward rectified current 9.5mm lead length, @ $T_A=75^\circ C$	$I_{F(AV)}$	1.1	0.8		0.6	A
Peak forward surge current 10ms single half-sine-wave superimposed on rated load @ $T_J=125^\circ C$	I_{FSM}	30.0	15.0		10.0	A
Maximum instantaneous forward voltage @ $I_F=I_{F(AV)}$	V_F	1.2	1.7	1.8	2.0	V
Maximum reverse current @ $T_A=25^\circ C$ at rated DC blocking voltage @ $T_A=100^\circ C$	I_R	100.0 500.0	50.0 300.0		100.0 500.0	μA
Maximum reverse recovery time (Note1)	t_{rr}	50				ns
Typical junction capacitance (Note2)	C_J	20			15	pF
Typical thermal resistance (Note3)	$R_{\theta JL}$	60				$^\circ C/W$
Operating junction temperature range	T_J	- 55 ----- + 150				$^\circ C$
Storage temperature range	T_{STG}	- 55 ----- + 150				$^\circ C$

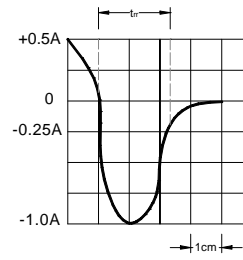
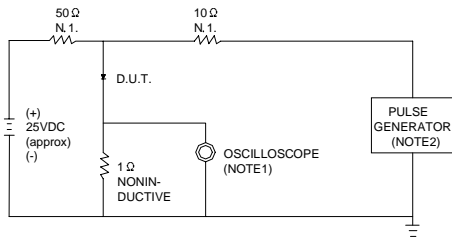
NOTE: 1. Measured with $I_F=0.5A$, $I_R=1A$, $I_{rr}=0.25A$.

2. Measured at 1.0MHz and applied reverse voltage of 4.0V DC.

3. Thermal resistance junction to ambient.

www.galaxyen.com

FIG.1 – TEST CIRCUIT DIAGRAM AND REVERSE RECOVERY TIME CHARACTERISTIC



NOTES: 1. RISE TIME = 7ns MAX INPUT IMPEDANCE = 1MΩ, 22pF.
 2. RISE TIME = 10ns MAX SOURCE IMPEDANCE = 50 Ω.

SET TIME BASE FOR 10/20 ns/cm

FIG.2 – TYPICAL FORWARD CHARACTERISTIC

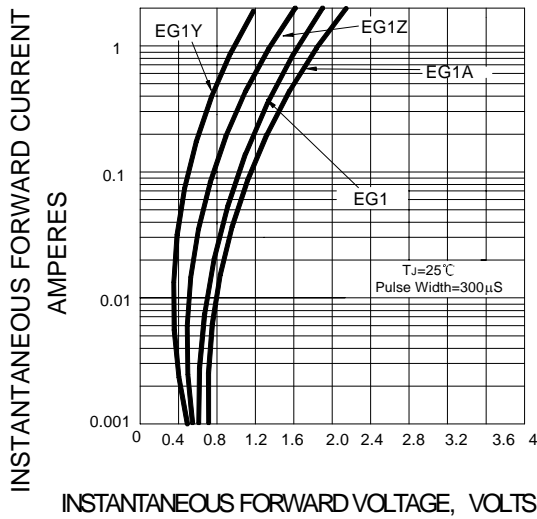


FIG.3 – FORWARD DERATING CURVE

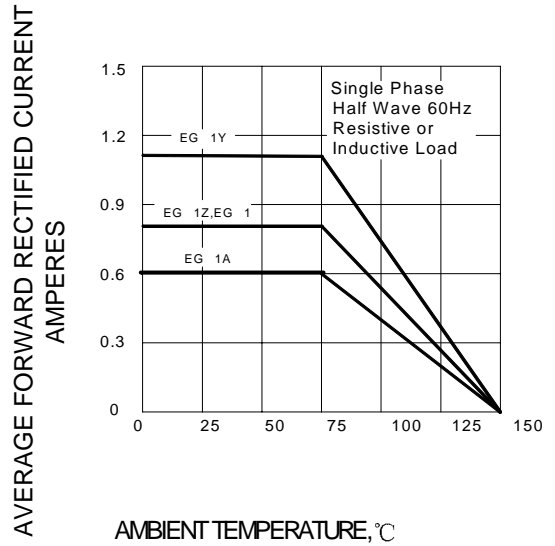


FIG.4 – PEAK FORWARD SURGE CURRENT

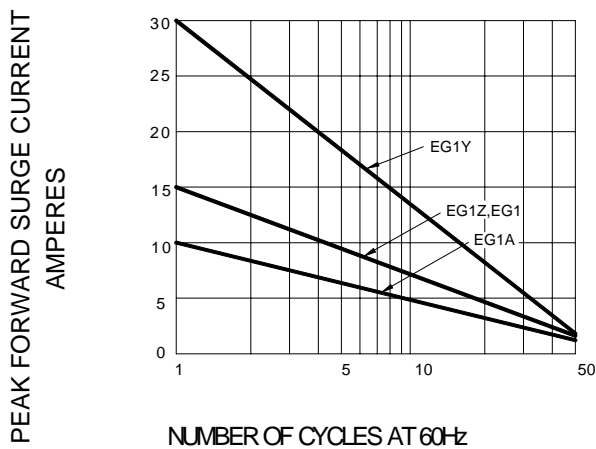


FIG.5 – TYPICAL JUNCTION CAPACITANCE

