



## LBS35003 SAW Filter Technical Specification

**S P**  
**LBS 35003**

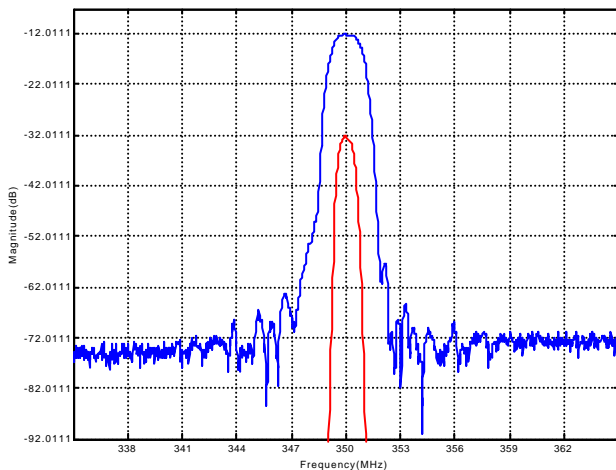
### Absolute Maximum Rating

Rating	Value
CW RF power Dissipation	+10dBm
DC Voltage between any 2 pins	±30VDC
Operating Temperature	-10 to +50°C

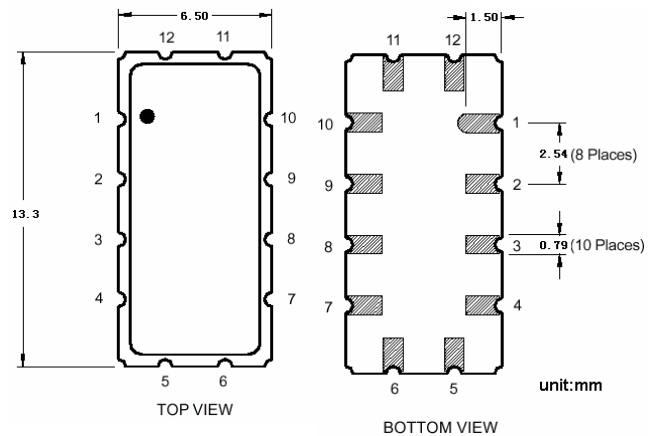
### Electrical Characteristic

Characteristic	Unit	Minimum	Typical	Maximum
Center Frequency (f <sub>0</sub> )	MHz	349.9	350	350.1
1dB Bandwidth	MHz	1.0	1.14	
20dB Bandwidth	MHz		2.8	2.9
40dB Bandwidth	MHz		3.58	4.4
Insertion Loss	dB		12.11	15
Amplitude Ripple	dB		0.01	0.2
Absolute Delay	usec		1.39	
Ultimate Rejection	dB	50	53	
Ambient Temperature	°C		25	
Package	SMP-53			
Substrate Material	Quartz			

### Frequency response

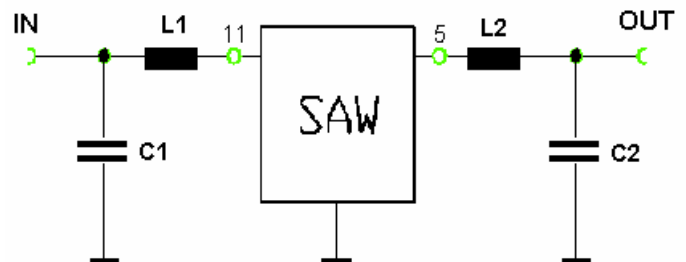


### Package



### Electrical Connections

Connection		Terminals
Port 1	Input or Return	11
	Return or Input	12
Port 2	Output or Return	5
	Return or Output	6
Ground		All others
Single Ended Operation		Return is ground
Differential Operation		Return is hot



L1=L2=18nH  
C1=C2=18pF