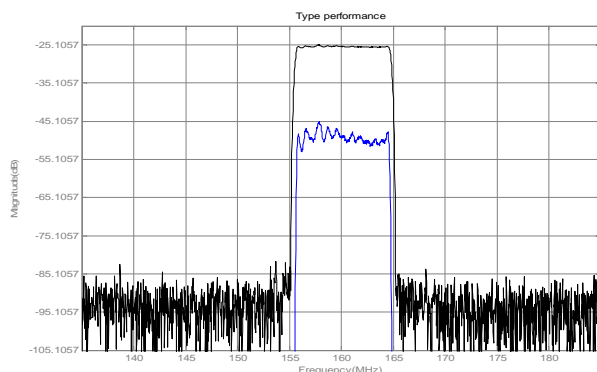




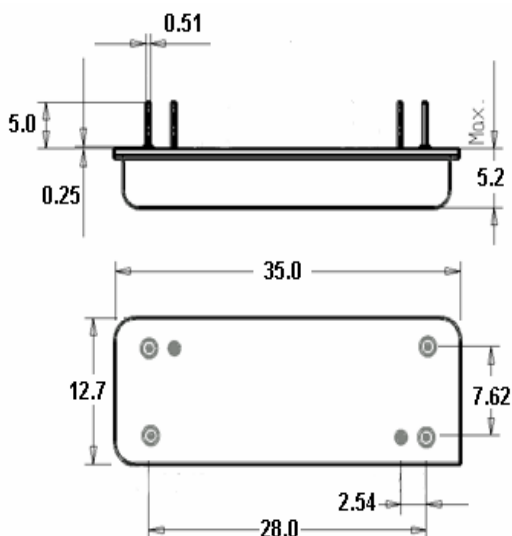
LBT16011 SAW Filter Electrical Characteristic

<i>Specifications</i>				
Parameter	Unit	Minimum	Typical	Maximum
Center Frequency	MHz		160	
Insertion Loss	dB	-	25.4	26.5
1 dB Bandwidth	MHz	8.7	8.95	-
3 dB Bandwidth	MHz	9.1	9.15	-
40 dB Bandwidth	MHz	-	10	10.15
Passband Variation	dB	-	0.8	1
Group delay Variation	nsec		80	200
Absolute Delay	usec	-	3.99	-
Ultimate Rejection	dB	48	55	-
Substrate Material		112 LT		
Ambient Temperature	°C	25		
Package Size		DIP3512 (35.2x12.7x5.2mm ³)		

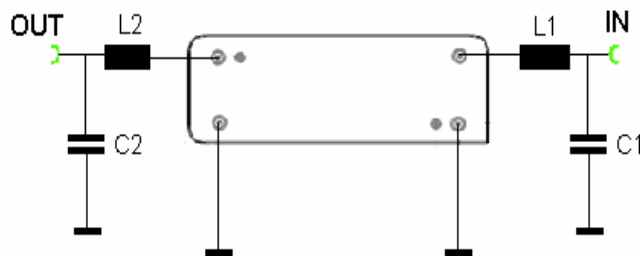
Typical Performance



Package Outline



Matching Configuration



L1= 22nH L2=27nH

C1=C2=36pF

Source/Load Impedance=50 ohm

Notes - Component values may change depending on board layout.