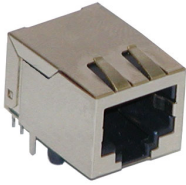


# RJ-45 Filter Port Jack with Common Mode Choke

## EPJ9078-S2

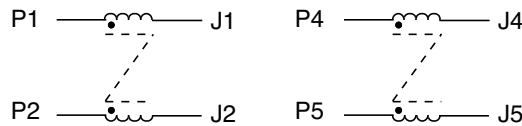


- UL94V-0 rated connector housing •
- Contact Plating : 15  $\mu$ inch gold flashed •
- Space saving RJ-45 Connectors •

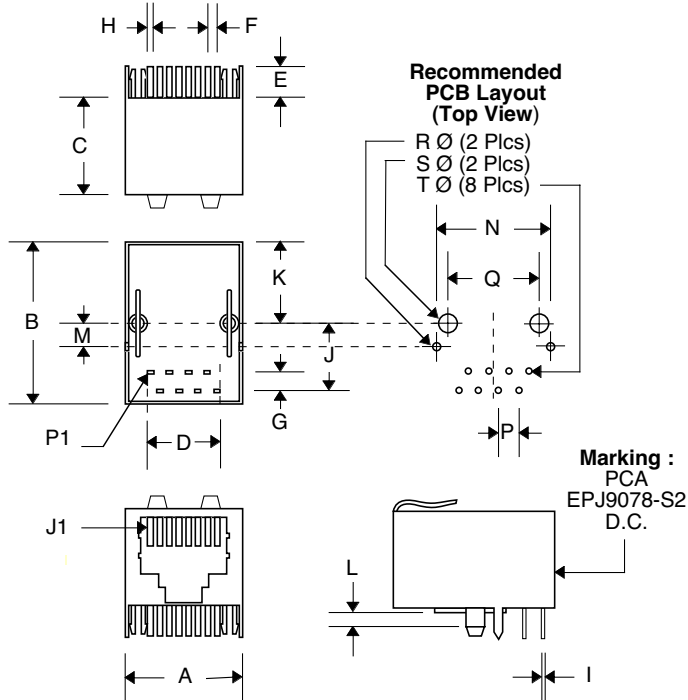
### Electrical Parameters @ 25° C

Turns Ratio ( $\pm 5\%$ )	OCL ( $\mu$ H Typ.)	DCR ( $\Omega$ Max.)				CMRR (dB Min.)					
		P1-J1	P2-J2	P4-J4	P5-J5	1 MHz	5 MHz	20 MHz	70 MHz	200 MHz	500 MHz
Xmit/Rcv 1:1 / 1:1	10 KHz, 0.01V 65	0.5	0.5	0.5	0.5	-5	-15	-15	-20	-17	-6

### Schematic



### Package



### Dimensions

Dim.	(Inches)			(Millimeters)		
	Min.	Max.	Nom.	Min.	Max.	Nom.
A	.614	.638	.626	15.60	16.20	15.90
B	---	---	.843	---	---	21.40
C	---	---	.531	---	---	13.50
D	---	---	.350	---	---	8.89
E	---	---	.132	---	---	3.35
F	---	---	.050	---	---	1.27
G	---	---	.100	---	---	2.54
H	.018	.020	.019	.457	.508	.483
I	---	---	.010	---	---	.254
J	---	---	.350	---	---	8.89
K	---	---	.429	---	---	10.89
L	---	---	.070	---	---	1.78
M	---	---	.120	---	---	3.05
N	---	---	.610	---	---	15.49
P	---	---	.100	---	---	2.54
Q	---	---	.450	---	---	11.43
R	---	---	.063	---	---	1.60
S	---	---	.127	---	---	3.25
T	---	---	.035	---	---	.900