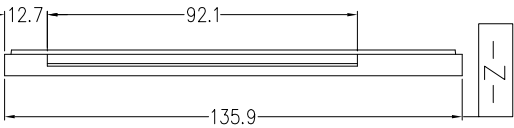
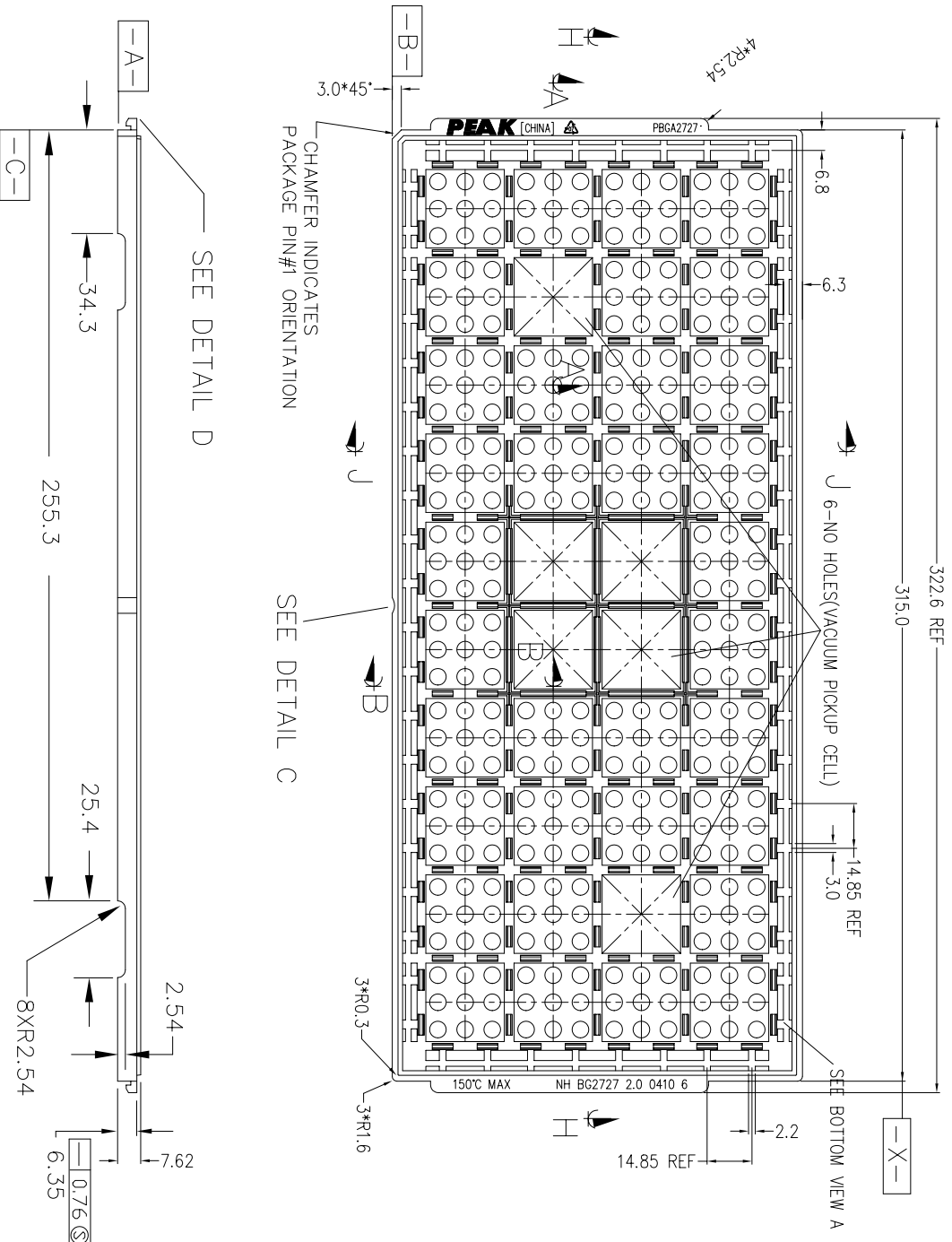
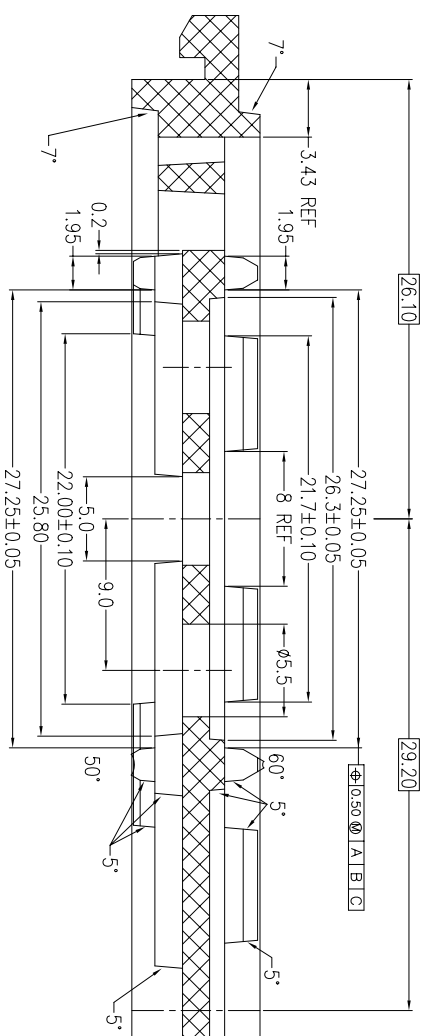


RECYCLE WITH SEMICYCLE

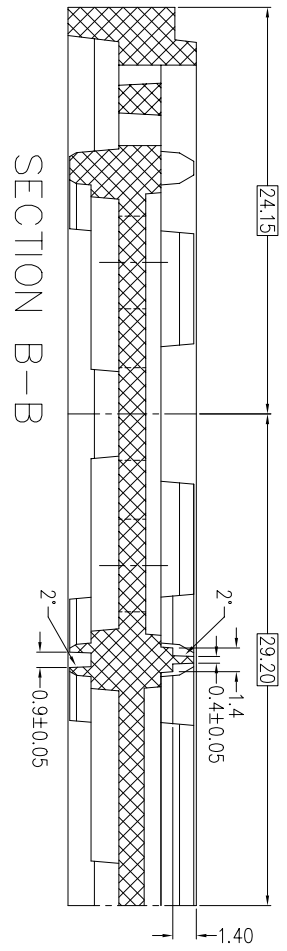
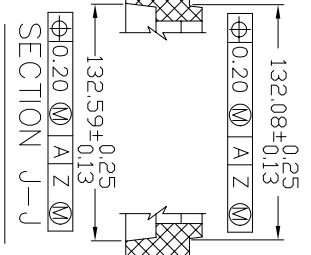
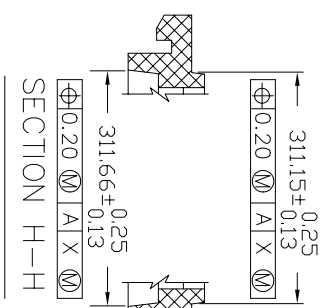
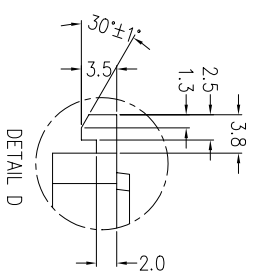
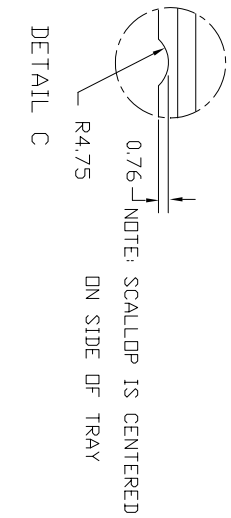
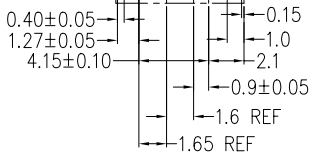


- NOTES :
1. MATERIAL - PP6.
  2. ALL DIMENSIONS ARE IN MILLIMETERS.
  3. TOLERANCES - X.X=±0.25  
- X.XX=±0.13
  - UNLESS OTHERWISE SPECIFIED.
  4. ESD - SURFACE RESISTIVITY  
- 10<sup>5</sup> TO 10<sup>11</sup> OHMS/SQ.
  5. FOR PACKAGE - PBGA
  6. PART NO. : NH BG2727 2.0 0410 6  
(PLEASE INDICATE ON PURCHASE ORDER).

6	P-01071	ADD MATERIAL ON BOTH CORNERS AND THICKEN THE BEGS AT CORNER REGION OF THE TRAY FILL THE HOLES TO STRENGTH THE TRAY AT FOUR CORNERS OF THE E TRAY	21 JUN 01	THIS DOCUMENT CONTAINS INFORMATION PROPRIETARY TO PEAK PLASTIC & METAL PRODUCTS INTERNATIONAL LIMITED. REPRODUCTION, DISCLOSURE OR USE OF THIS DOCUMENT IS EXPRESSLY PROHIBITED EXCEPT IF OTHERWISE AGREED UPON IN WRITING.	DRAWN BY : BUSH	PAGE 1 OF 2	CUSTOMER : <b>PEAK</b>
5	P-00987	ADD 4 RIBS AT THE FRAME	24 JUL 00		CHECKED BY :	DATE : 21 JUN 01	PEAK PLASTIC & METAL PRODUCTS INT'L LTD.
4	P-00944	CHANGE TEMPERATURE	27 APR 99		APPROVED BY :	DATE : 21 JUN 01	
3	P-00821	CHANGE SURFACE RESISTIVITY	1 FEB 99		APPROVED BY :	DATE : 21 JUN 01	TITLE : NH BG2727 2.0 0410 6
2	P-00681	CHANGE POSITION TOL	16 OCT 97		DO NOT SCALE DRAWING	CODE : CS402793	DWG NO.: NH BG2727 2.0 0410 6
REV. NO.	ECN #	DESCRIPTION	DATE				REV. 6



SECTION A-A



SECTION B-B

6	P-01071	ADD MATERIAL ON RIB CORNERS AND THICKEN THE RIBS AT CERTAIN PORTION OF THE TRAY	21 JUN 01	THIS DOCUMENT CONTAINS INFORMATION PROPRIETARY TO PEAK PLASTIC & METAL PRODUCTS INTERNATIONAL LIMITED. REPRODUCTION, DISCLOSURE OR USE OF THIS DOCUMENT IS EXPRESSLY PROHIBITED EXCEPT IF OTHERWISE AGREED UPON IN WRITING.
5	P-00987	ADD 4 RIBS AT THE FRAME	24 JUL 00	
4	P-00944	CHANGE TEMPERATURE	27 APR 99	
3	P-00821	CHANGE SURFACE RESISTIVITY	1 FEB 99	
2	P-00681	CHANGE POSITION TOL	16 OCT 97	
REV. NO.	ECN #	DESCRIPTION	DATE	

DRAWN BY :	BUSH	PAGE 2 OF 2
CHECKED BY :		DATE : 21 JUN 01
APPROVED BY :		DATE : 21 JUN 01
DO NOT SCALE DRAWING		DATE : 21 JUN 01
		CODE : CS402793



CUSTOMER : **PEAK**

TITLE : NH BG2727 2.0 0410 6

DWG NO.: NH BG2727 2.0 0410 6

REV. 6