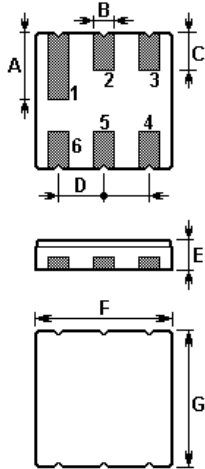


The **ACTF2001/243.95/DCC6** is a low-loss, compact, and economical surface-acoustic-wave (**SAW**) filter in a surface-mount ceramic **DCC6** case using as IF filter for PHS handset phone selectivity in 243.950 MHz receivers.

1.Package Dimension (DCC6)

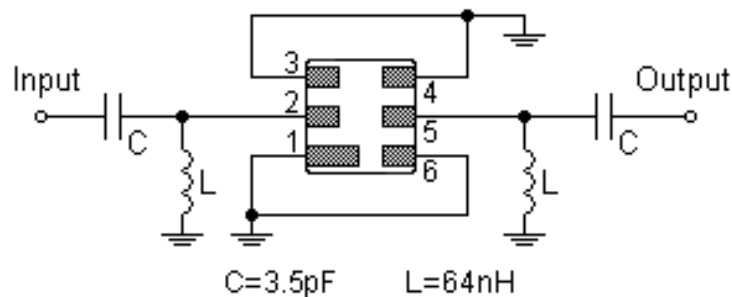


2.

Pin	Configuration
2	Input
5	Output
1,3,4,6	Ground

Sign	Data (unit: mm)	Sign	Data (unit: mm)
A	1.9	E	1.2
B	0.64	F	3.8
C	1.0	G	3.8
D	1.27		

3.Test Circuit



In keeping with our ongoing policy of product evolution and improvement, the above specification is subject to change without notice.

ISO9001: 2000 Registered - Registration number 6830/2

For quotations or further information please contact us at:

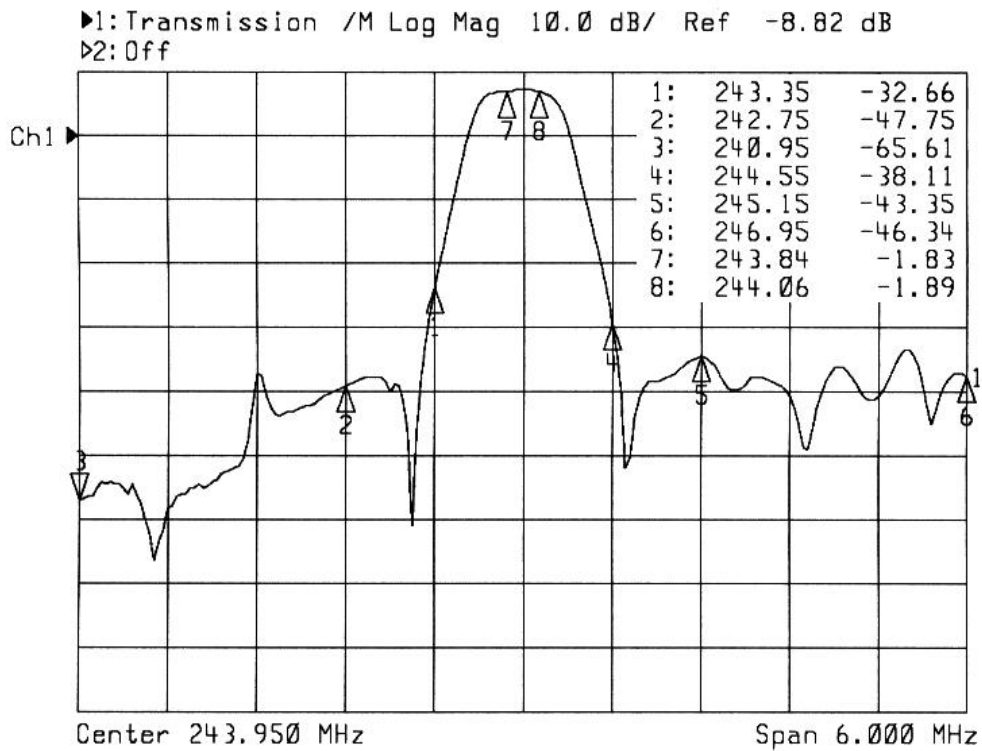
3 The Business Centre, Molly Millars Lane, Wokingham, Berks, RG41 2EY, UK

<http://www.actcrystals.com>

Issue : 1 C1

Date : SEPT 04

4. Frequency Characteristics



5. Performance

5-1. Maximum Ratings

Rating	Value	Units
Input Power Level	10	dBm
DC Voltage	12V	V _{DC}
Storage Temperature	-40 to +85	°C
Operating Temperature	-40 to +85	°C
Soldering Temperature	+235	°C

In keeping with our ongoing policy of product evolution and improvement, the above specification is subject to change without notice.

ISO9001: 2000 Registered - Registration number 6830/2

For quotations or further information please contact us at:

3 The Business Centre, Molly Millars Lane, Wokingham, Berks, RG41 2EY, UK

<http://www.actcrystals.com>

Issue : 1 C1

Date : SEPT 04

5-2.Electronic Characteristics

Characteristic		Min.	Typ.	Max.	Units
Centre Frequency (Centre frequency between 3dB points)	f_c		243.950		MHz
Insertion Loss ($f_c \pm 110\text{kHz}$)	IL	--	2.0	4.0	dB
3dB Passband	BW_{3dB}		585		kHz
Amplitude ripple			0.1	1.0	dB
Group Delay ripple			0.28	1.0	us
Rejection	$f_c - 21.6\text{MHz}$	60	--	--	dB
	$f_c - 1.2\text{MHz}$	40	--	--	
	$f_c - 0.6\text{MHz}$	25	35	--	
	$f_c + 0.6\text{MHz}$	25	33	--	
	$f_c + 1.2\text{MHz}$	38	45	--	
	$f_c + 21.6\text{MHz}$	55	--	--	
Frequency Temperature Coefficient	FTC		0		ppm/°C ²

ⓘ CAUTION: Electrostatic Sensitive Device. Observe precautions for handling!

1. The frequency f_c is defined as the midpoint between the 3dB frequencies.
2. Unless noted otherwise, all measurements are made with the filter installed in the specified test fixture that is connected to a 50 Ω test system with VSWR \leq 1.2:1. The test fixture L and C are adjusted for minimum insertion loss at the filter centre frequency, f_c . Note that insertion loss, bandwidth, and passband shape are dependent on the impedance matching component values and quality.
3. Unless noted otherwise, specifications apply over the entire specified operating temperature range.
4. The specifications of this device are based on the test circuit shown above and subject to change or obsolescence without notice.
5. All equipment designs utilizing this product must be approved by the appropriate government agency prior to manufacture or sale.
6. Our liability is only assumed for the Surface Acoustic Wave (SAW) component(s) per se, not for applications, processes and circuits implemented within components or assemblies.

In keeping with our ongoing policy of product evolution and improvement, the above specification is subject to change without notice.

ISO9001: 2000 Registered - Registration number 6830/2

For quotations or further information please contact us at:

3 The Business Centre, Molly Millars Lane, Wokingham, Berks, RG41 2EY, UK

<http://www.actcrystals.com>

Issue : 1 C1

Date : SEPT 04